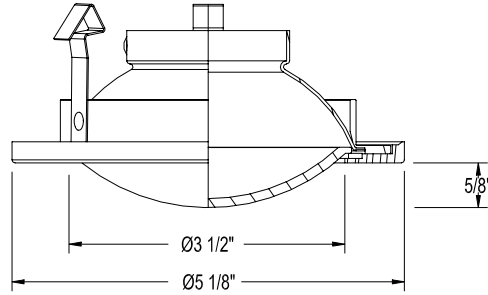


CATALOG NUMBER	TYPE
PROJECT	

4" LOW VOLTAGE DOWNLIGHT TRIM

HR-D418



Ordering Matrix

Series	Model Number	Finish
[]	[]	[]
HR	D418	WT

Ordering Example (*series – model number – finish*): HR-D418-WT

Product Details

Description:	Wet location listed glass dome trim. Typical applications include bathrooms, sauna's, workrooms and patios. For use with HR-8400 series low voltage downlights.
Materials:	Durable die-cast aluminum construction. Tempered frosted glass dome lens with silicon gasket. Three heavy gauge retention clips firmly hold trim to housing.
Aiming:	Center lamp holder holds the lamp completely at nadir, providing the full lamp output directed at the object(s) below the trim.
Lamping:	Utilizes 12 volt MR16 lamps. Ordered Separately. 50w maximum for all housings.
Finish:	Abrasion resistant powder coat painted finish. Trim is available in White (WT).
Listing:	UL & CUL Listed. Suitable for wet and damp locations.

Specification Features

- Tool-less re-lamping and maintenance features to provide years of reliable operation.
- Small dome shower light provides a good amount of diffused downward lighting from a small aperture.
- Handles ceiling thickness up to 3/4".
- 2 year W.A.C. Lighting product warranty.

Compatible Housings (sold separately):

HR-8401E Non IC Remodeling 12 Volt Electronic Lamp: MR16 50W Max		HR-8401H & HF Non IC Remodeling 12 volt Magnetic Lamp: MR16 50W Max		HR-8402E Non IC New Construction 12 Volt Electronic Lamp: MR16 50W Max	
HR-8402H & HF Non IC New Construction 12 Volt Magnetic Lamp: MR16 50W Max		HR-8402HL & HFL Non IC New Construction 12 Volt Magnetic Lamp: MR16 75W Max		HR-8403H & HF IC Rated. Air tight ready. New Construction 12 Volt Magnetic Lamp: MR16 50W Max	