

TOTO®

Perfection by Design

Battery Powered (6V DC) Sensor Urinal Flush Valve, Concealed (4" x 4") - 1.0 GPF

To be specified:

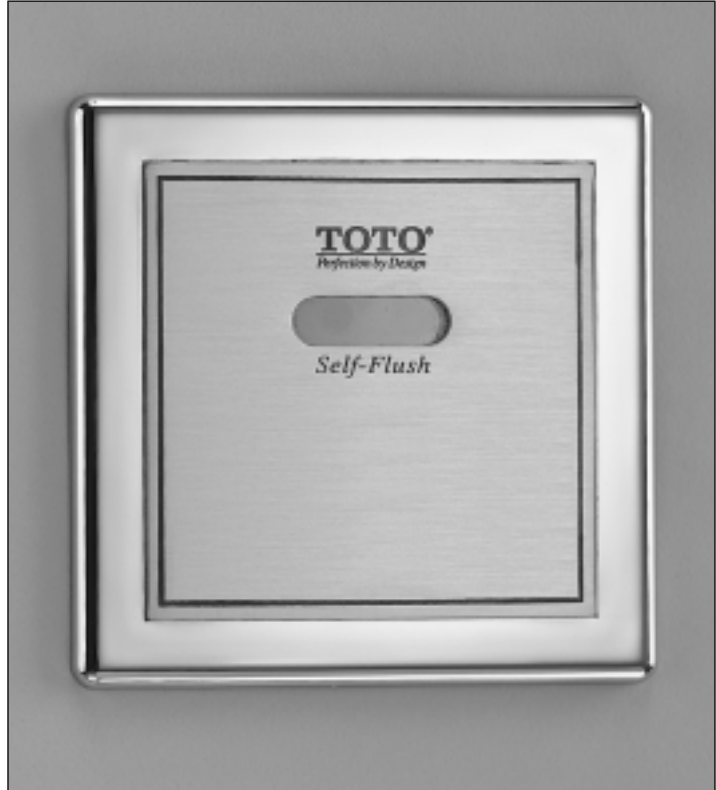
Sensor Urinal Flush Valve

- Complete Set, Surface Mount, Satin Finish (4" x 4" cover plate)
- Back Spud - TEU3DNS-11 (3/4" V.B.)
- Back Spud - TEU3DNS-21 (1-1/4" V.B.)

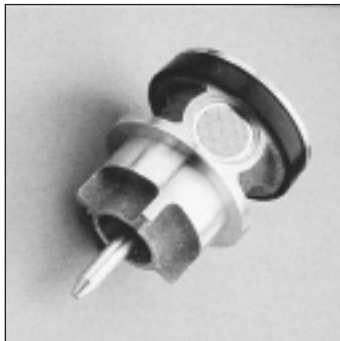
Supplied with:

- Vacuum Breaker & Angle Stop Set - VB13RB-11
 - 3/4" Angle Stop - 10077t6
 - 3/4" Vacuum Breaker - 10075t6
 - Outlet Tube - TH559EDV171
 - Sweat Solder Kit - SJ1
- Vacuum Breaker & Angle Stop Set - VB13RB-21
 - 3/4" Angle Stop - 10077t6
 - 1-1/4" Vacuum Breaker - 10075t7
 - Outlet Tube - TH559EDV172
 - Sweat Solder Kit - SJ1

Meets the American disability Act Guidelines and ANSI A117.1 requirements for people with disabilities



TEU3DNS-11



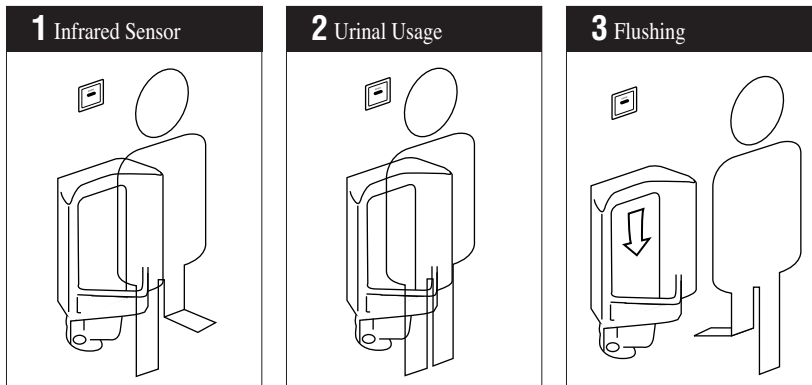
AUTOMATIC FLUSHING SYSTEM

TOTO, the world leader in advanced plumbing systems, provides sensor operated flush valves for facilities demanding the finest sanitation equipment for busy restrooms. "Hands-free" technology effectively reduces unsanitary conditions from unflushed fixtures.

SUPERIOR PISTON VALVE



TOTO's piston valve technology is a marked improvement over traditional rubber diaphragm type valves. Longer piston travel and self-cleaning stainless steel debris screen reduce common problems such as continuous running and flooding. The piston seat itself will not warp or mis-seal thus, significantly reducing repair and maintenance costs. A micro-porous cup seal keeps the piston self-lubricated upon each activation with the incoming water supply.

OPERATING PROCEDURE A sanitary environment without using the hands.



Battery Powered (6V DC) Sensor Urinal Flush Valve, Concealed (4" x 4") - 1.0 GPF

SPECIFICATIONS

Product	TEU3DNS-11-Complete Set (3/4" V.B.), Back Spud, Satin Finish TEU3DNS-21-Complete Set (1-1/4" V.B.), Back Spud, Satin Finish
Power supply	Four AA alkaline batteries, 2-year life, based on 4000 cycles per month
Detection range	Self-adjusting to environment
Detection time	Factory setting at six (6) seconds minimum
Water supply	3/4" NPT
Discharge quantity	Factory setting at 1.0 GPF/3.8 LPF
Urinal type	Low consumption wash down and jetted flush design urinals
Ambient temperature	32°-104°F (0°-40°C)
Supply water pressure	15 psi - 125 psi*
Warranty	Limited three (3) year warranty on all component parts. Details available upon request.
Listings	 ASSE 1037 

These dimensions and specifications are subject to change without notice.

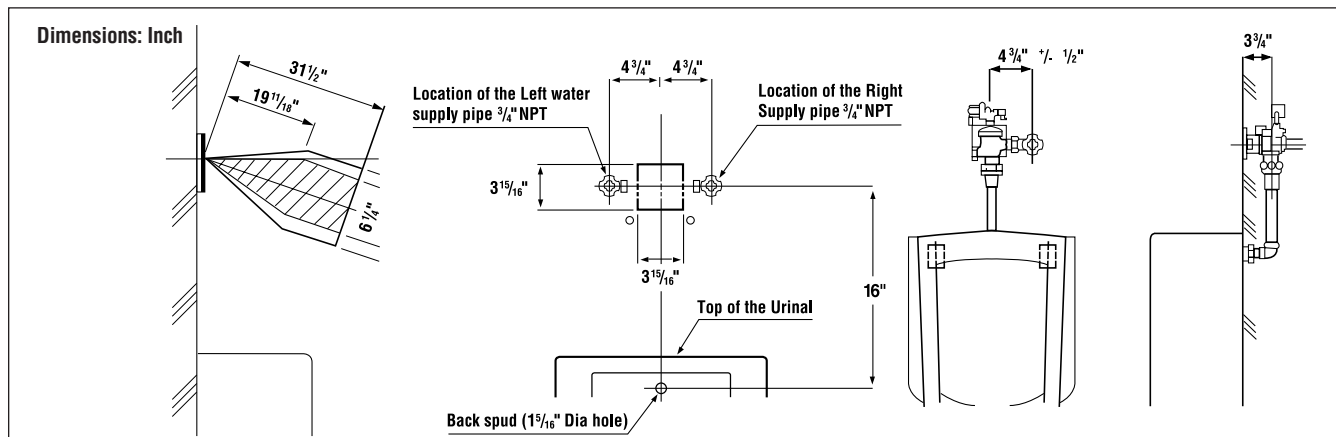
**Water pressures over 80 psi are not recommended for most plumbing fixtures.*

SUGGESTED ENGINEERING SPECIFICATION:

TOTO Model No. _____
Automatic infrared sensor activated, bronze piston urinal flush valve. 4" x 4" cover plate with brushed stainless finish and vandal resistant mounting screws. Four AA alkaline batteries included with a 2-year life at 4,000 cycles/month. Low consumption 1.0 gallons per flush. Piston valve with

stainless self-cleaning debris screen and self-cleaning solenoid. Electrical sensor components separated from water body of valve and sealed in a waterproof compartment. Fuzzy logic and vandal resistant sensor included. Manual override button included.

DIAGRAM:



TOTO[®]
Perfection by Design

TOTO U.S.A., INC. • 1155 Southern Road, Morrow, GA 30260
Tel. (770) 282-8686 • Fax. (770) 282-8701 • www.totousa.com
Printed in U.S.A. © TOTO LTD. 06/02 #H80046

Printed on recycled paper 

REV 06/02