

TOTO®

Perfection by Design

AC Powered (120V AC to 10V DC) Sensor Urinal Flush Valve, Concealed (4" x 4") - 1.0 GPF

To be specified:

Sensor Urinal Flush Valve

- Complete Set, Surface Mount, Satin Finish (4" x 4" cover plate)
 - Back Spud – TEU3ANSR-11 (3/4" V.B.)
 - Back Spud – TEU3ANSR-21 (1-1/4" V.B.)

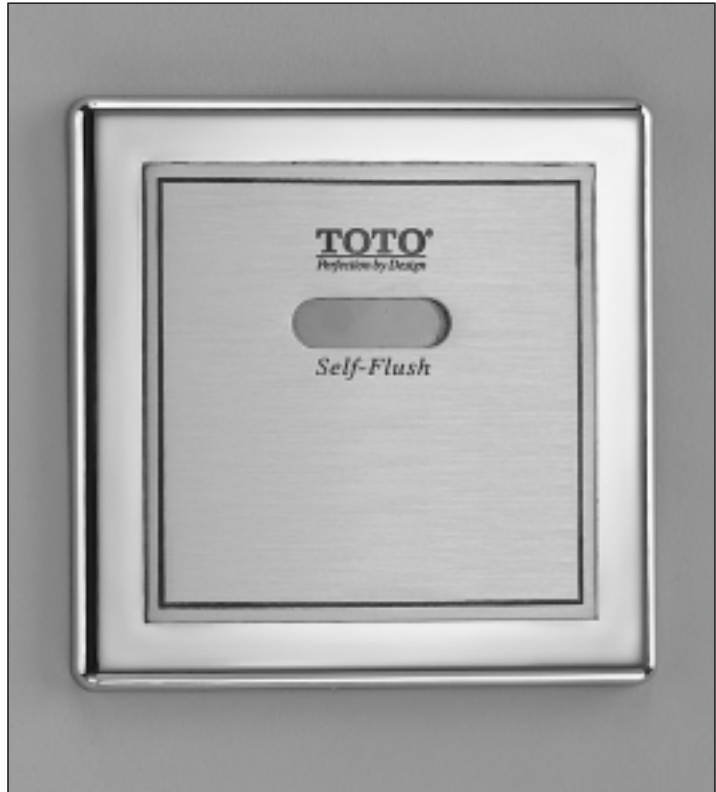
Supplied with:

- Vacuum Breaker & Angle Stop Set -VB13RB-11
 - 3/4" Angle Stop - 10077t6
 - 3/4" Vacuum Breaker - 10075t6
 - Outlet Tube - TH559EDV171
 - Sweat Solder Kit – SJ1
- Vacuum Breaker & Angle Stop Set -VB13RB-21
 - 3/4" Angle Stop - 10077t6
 - 1-1/4" Vacuum Breaker - 10075t7
 - Outlet Tube - TH559EDV172
 - Sweat Solder Kit – SJ1

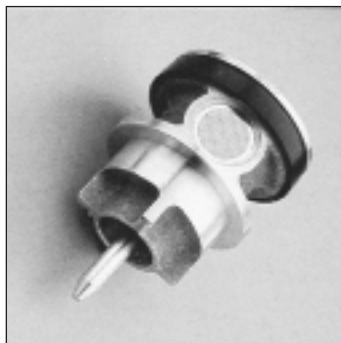
Optional Accessories:

- Transformer – THU701TR

Meets the American disability Act Guidelines and ANSI A117.1 requirements for people with disabilities



TEU3ANSR-11



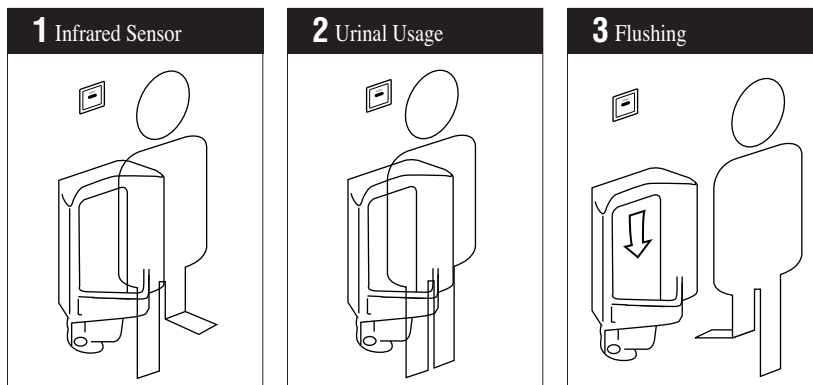
AUTOMATIC FLUSHING SYSTEM

TOTO, the world leader in advanced plumbing systems, provides sensor operated flush valves for facilities demanding the finest sanitation equipment for busy restrooms. "Hands-free" technology effectively reduces unsanitary conditions from unflushed fixtures.

SUPERIOR PISTON VALVE

TOTO's piston valve technology is a marked improvement over traditional rubber diaphragm type valves. Longer piston travel and self-cleaning stainless steel debris screen reduce common problems such as continuous running and flooding. The piston seat itself will not warp or mis-seal thus, significantly reducing repair and maintenance costs. A micro-porous cup seal keeps the piston self-lubricated upon each activation with the incoming water supply.





OPERATING PROCEDURE A sanitary environment without using the hands.



Reliance Commercial Line

AC Powered(120V AC to 10V DC) Sensor Urinal Flush Valve, Concealed (4" x 4") - 1.0 GPF

SPECIFICATIONS

Product	TEU3ANSR-11-Complete Set (3/4" V.B.), Back Spud, Satin Finish TEU3ANSR-21-Complete Set (1-1/4" V.B.), Back Spud, Satin Finish
Detection range	Self-adjusting to environment
Detection time	Factory setting at six (6) seconds minimum
Water supply	3/4" NPT
Discharge quantity	Factory setting at 1.0 GPF/3.8 LPF
Urinal type	Low consumption wash down and jetted flush design urinals
Ambient temperature	32°-104°F (0°-40°C)
Supply water pressure	15 psi - 125 psi*
Transformer	THU701TR Class 2 Transformer - Overload protection provided. Primary voltage: 120V, AC, 60Hz -> 10VDC, 1950mA. Maximum 10 units per transformer
Warranty	Limited three (3) year warranty on all component parts. Details available upon request.
Listings	  City of Los Angeles   A.S.S.E. 1037

These dimensions and specifications are subject to change without notice.

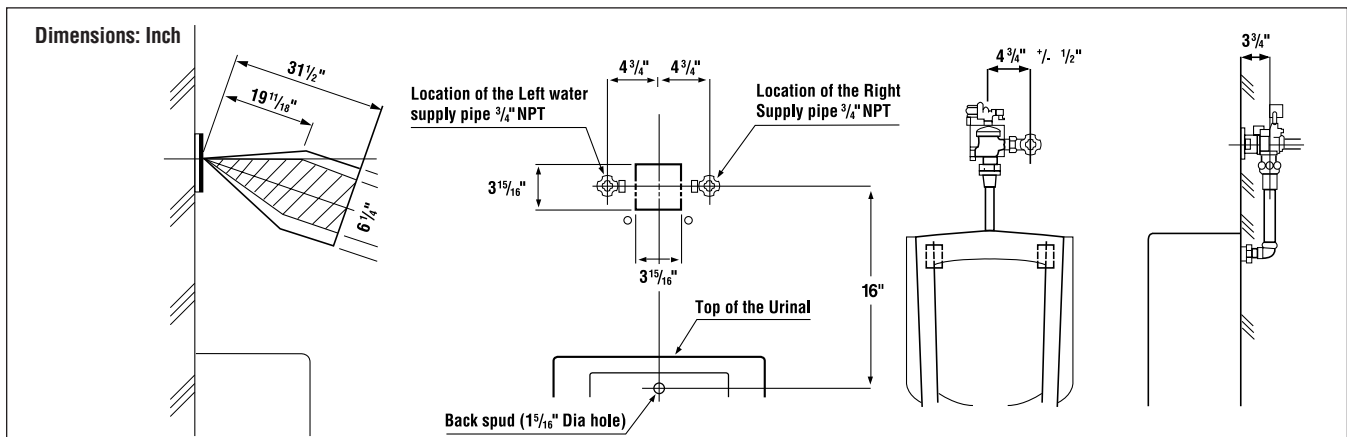
**Water pressures over 80 psi are not recommended for most plumbing fixtures.*

SUGGESTED ENGINEERING SPECIFICATION:

TOTO Model No. _____
Automatic infrared sensor activated, bronze piston toilet flush valve. 4" x 4" cover plate with brushed stainless finish. 10V DC power source required. Electrical sensor components separated

from water body of valve and sealed in a waterproof compartment. Low consumption 1.0 gallons per flush. Piston valve with stainless self-cleaning debris screen.

DIAGRAM:



TOTO®
Perfection by Design

TOTO U.S.A., INC. • 1155 Southern Road, Morrow, GA 30260
Tel. (770) 282-8686 • Fax. (770) 282-8701 • www.totousa.com
Printed in U.S.A. © TOTO LTD. 05/02 #H80045

Printed on recycled paper 

REV 05/02