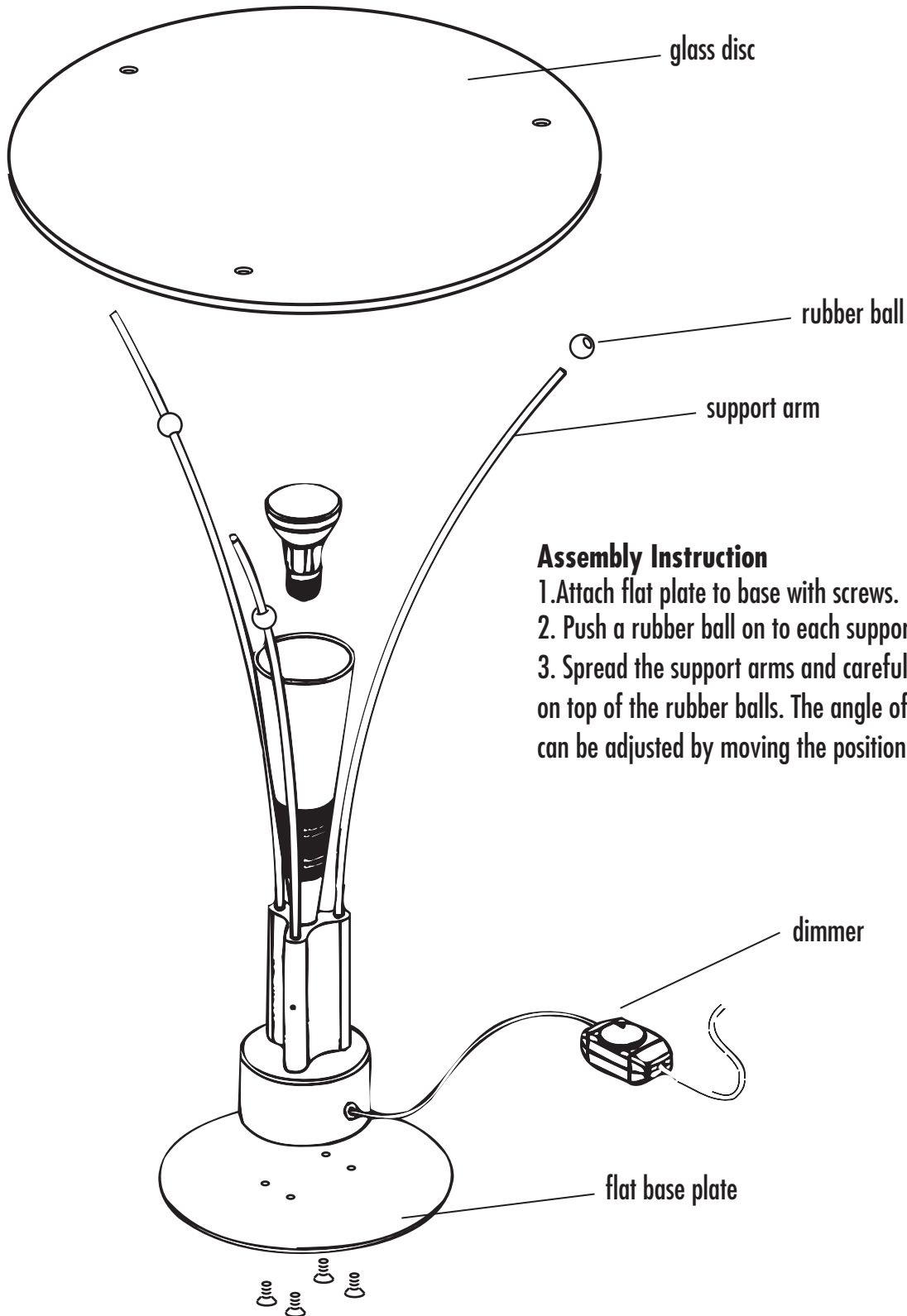


Important: Always unplug the power cord before installing or replacing bulb and before cleaning or other maintenance.



Assembly Instruction

1. Attach flat plate to base with screws.
2. Push a rubber ball on to each support rod.
3. Spread the support arms and carefully place glass on top of the rubber balls. The angle of the glass can be adjusted by moving the position of the rubber balls.