

SONNEMAN®

A WAY OF LIGHT

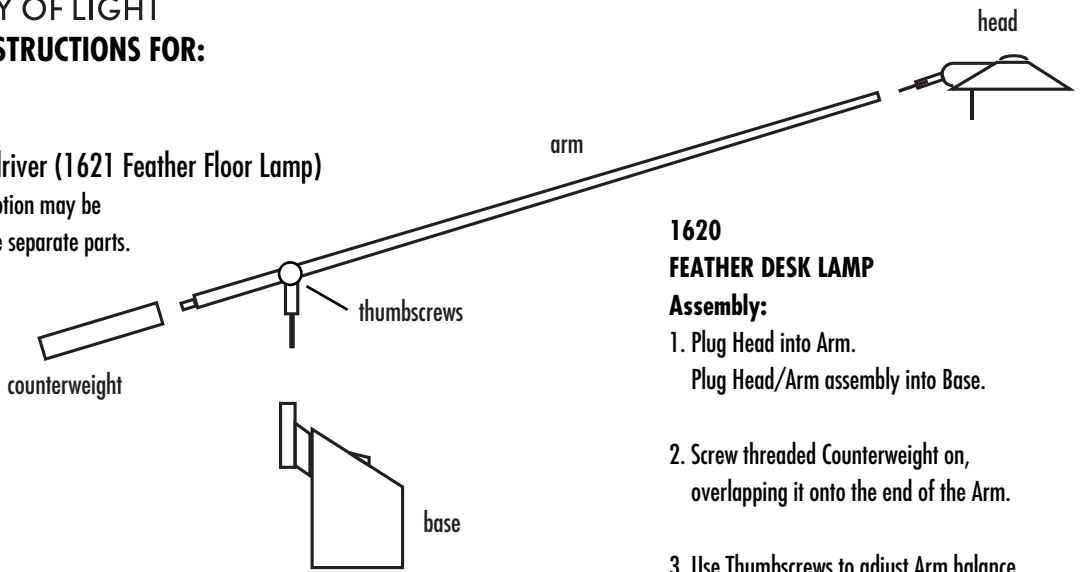
ASSEMBLY & RELAMPING INSTRUCTIONS FOR:

1620 - FEATHER DESK LAMP

1621 - FEATHER FLOOR LAMP

Tools Required: Phillips head screwdriver (1621 Feather Floor Lamp)

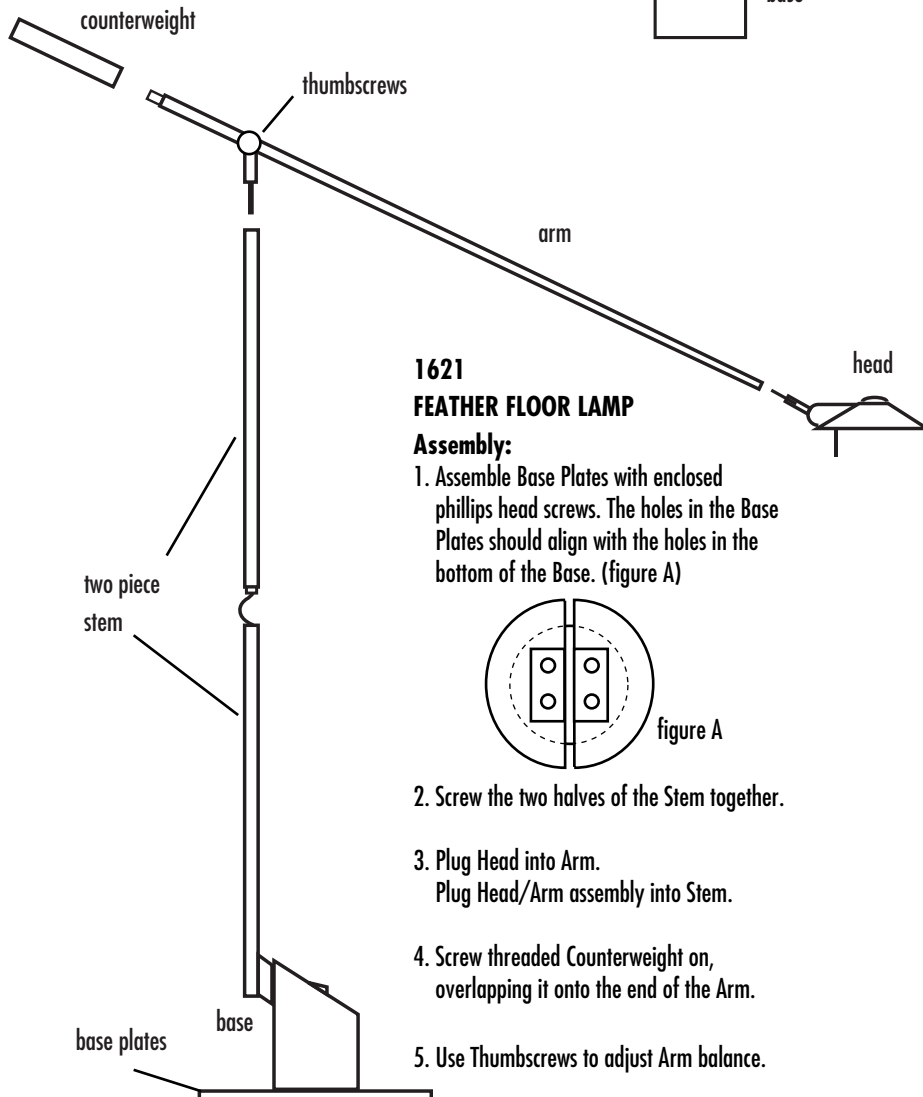
CAUTION: During assembly, a twisting motion may be necessary while plugging in the separate parts.



1620 FEATHER DESK LAMP

Assembly:

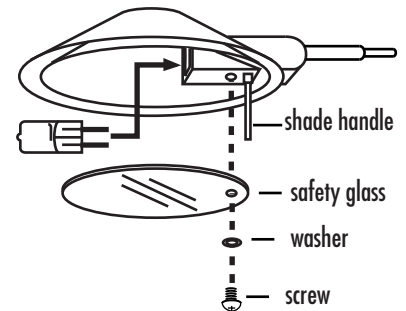
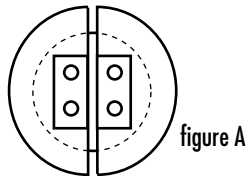
1. Plug Head into Arm.
Plug Head/Arm assembly into Base.
2. Screw threaded Counterweight on, overlapping it onto the end of the Arm.
3. Use Thumbscrews to adjust Arm balance.



1621 FEATHER FLOOR LAMP

Assembly:

1. Assemble Base Plates with enclosed phillips head screws. The holes in the Base Plates should align with the holes in the bottom of the Base. (figure A)
2. Screw the two halves of the Stem together.
3. Plug Head into Arm.
Plug Head/Arm assembly into Stem.
4. Screw threaded Counterweight on, overlapping it onto the end of the Arm.
5. Use Thumbscrews to adjust Arm balance.



LAMPING/ RELAMPING INSTRUCTIONS FOR FEATHER

1. When replacing the bulb, unplug lamp and allow to cool for 15 minutes before handling.
2. Remove screw to release the washer and safety glass.
3. Carefully insert the bulb into the socket of the lamp, using a glove or cloth, to protect the bulb's surface from fingerprints.
4. Reassemble Glass, Washer and secure with screw.

CAUTION: DO NOT INSERT ANY BULB OTHER THAN THE 50 WATT, BI-PIN HALOGEN.