

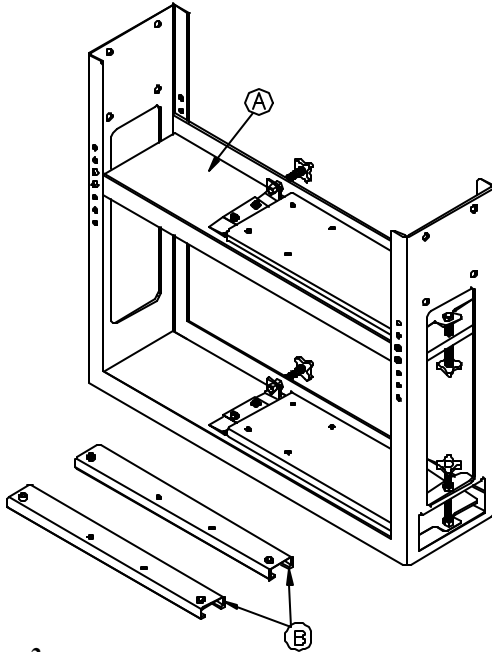
PBM-LPS2

INSTALLATION INSTRUCTIONS

CAUTION! Please confirm before proceeding that the LCD/DLP projectors you are going to dual stack have the necessary “lens shift” capability normally required for proper projector stacking alignment. It is strongly recommended for safety of the install that a minimum of two qualified installation personnel with proper installation equipment must be adhered to

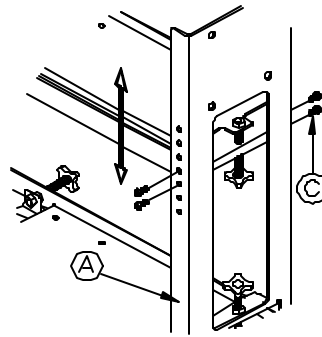
Step 1

Unpack the various components of the stacker assembly those being the main frame, pair of cross bars for the ceiling “eye” bolt or floor glide mounting and 3/8” assembly/ mounting hardware. If you are going to the floor mount or ceiling mount via (commercially available) 3/8” “eye” bolt or “all thread” rods install the two 20” cross bars to the frame with the 3/8” bolts and washers supplied. The two 3/8” threaded glide install points on each cross bar can be used as your 3/8” “eye” bolt or “all thread” mounting points for ceiling type installations. Single or pairs of any of our 1 1/2” or 2” optional suspension adapters like ASA-2446 or the APM-2446/2 adjustable height suspension can be bolted directly to the top frame with the 3/8” bolts and washers supplied. See Figure “A”.



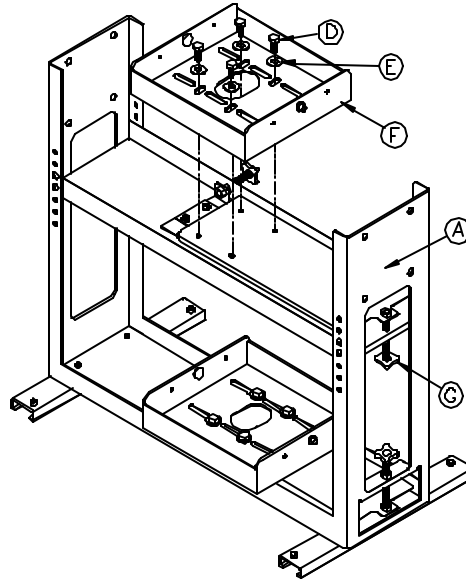
Step 2

If needed, Remove the four each 10/32 screws from the side walls of the lower projector mounting cross plate and move the plate higher or lower in the frame to allow the desired clearance to properly fit the upper projector with mount within the upper cavity. Reinstall and secure the four screws. See Figure “B”.



Step 3

Install the two PBM series projector mount base boxes to the upper and lower mounting plates with the angle holding points on the base box to the rear and secure the base boxes to the plates with the 3/8” bolts and washers supplied. make sure that both base boxes are at the same front to rear mounting slot points for optimum alignment of the two projectors on the screen. NOTE: The projectors can also be installed in an opposing screen configuration is desired. See Figure “C”



Step 4

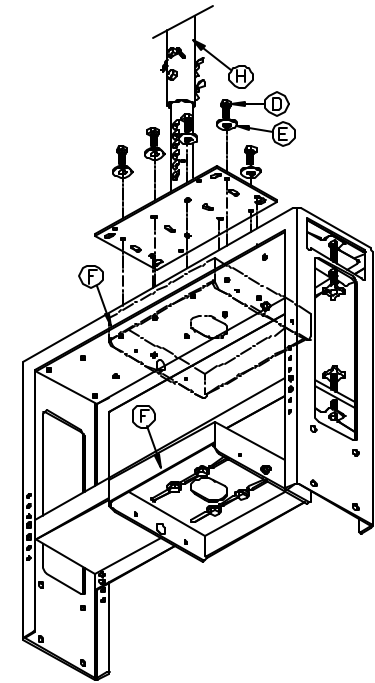
Install the projector mounting bracket to each projector in accordance with the instructions and hardware supplied with the projector mount.

Step 5

Floor mount only: With the two crossbars and floor glides installed and secured to the frame invert the stacker frame and place it at the point of projection.

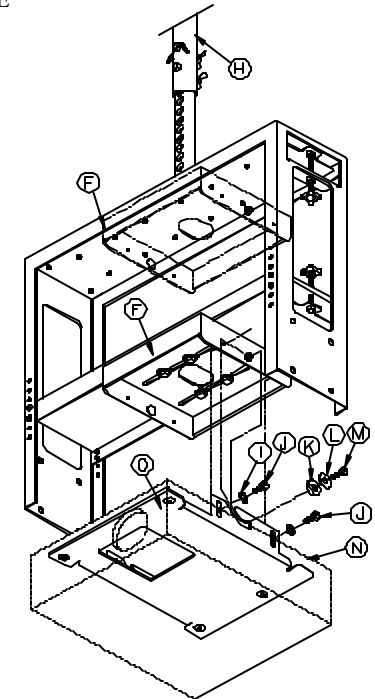
Step 6

Ceiling mount only: Secure the frame to the ceiling structure using four each 3/8” “eye” bolts or all thread rods at the cross bar mounting points or any combination of our optional suspension adapter(s). See Figure “D”



Step 7

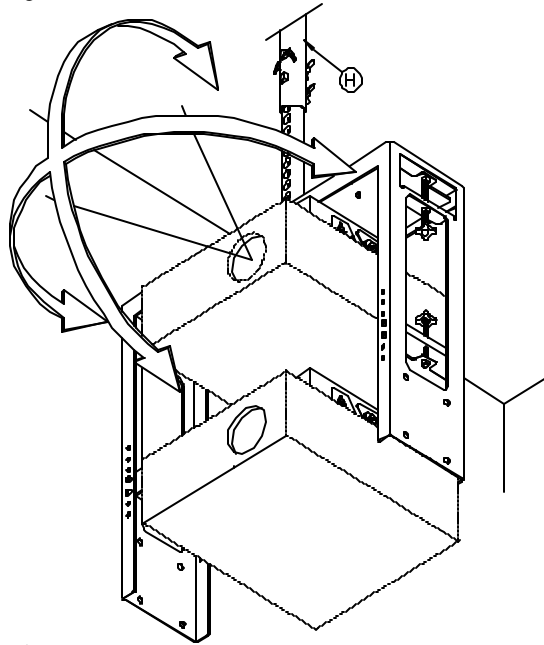
Install the two projectors on to the base boxes with the hardware and in accordance with the instructions supplied in the mount kit. Initially align each projector bracket on the base box in a flat tilt mode front to rear and lock the angle holding points on the projector to the base box bracket. See Figure “E”



INSTALLATION INSTRUCTIONS

Step 8

With the projector power "ON" and the two images present on the screen final optimum alignment of the two projector images can be accomplished. Continuous horizontal (yaw) rotation + or -2° from center of each projector is accomplished with the two front screws knobs on the frame. If needed, the two 1/4" yaw plate slot nuts or knobs located inside the frame chassis on each cross plate can be loosened slightly for smother yaw rotation. Continuous vertical (roll) rotation + or -3° from center of each projector is accomplished with the two side screws knobs on the frame. Optimum lens tilt angles should be accomplished using the lens shift feature incorporated in the projector. See Figure "F"



Step 9

Once final optimum alignment of the two images at the screen has been achieved recheck all alignment and mounting points for security.

Description/Hardware

- A. LPS-2 Projector Stacker (1ea)
- B. Floor Stand Legs (2ea)
- C. 10/32 Phillip Head Screws (8ea)
- D. 3/8" Slotted Hex Screws (8ea)
- E. M10 Washers (8ea)
- F. Base Box (2ea)
- G. Adjustment Knobs
- H. APM-2446WT Suspension Adapter (1ea)
- I. M6 Spring Washers (4ea)
- J. 6MMx12MM Angle Locking Bolts (4ea)
- K. Conical Spacer (2ea)
- L. M8 Flat Washer (2ea)
- M. M8X20MM Slotted Hex Screws
- N. Projector (not supplied)
- O. Projector Bracket

WARNING!

The ceiling should be capable of supporting a weight of at least five (5) times the projector(s) or monitor(s) weight. If it cannot, the ceiling must be reinforced. Proper installation procedure by qualified personnel as outlined in the installation instructions must be adhered to. Failure to do so could result in serious personal injury.

For further information or ordering assistance contact us at the phone/address number shown on the front of this page.



"We're Customer Driven"

Progressive Marketing Products, Inc.

2980-A Enterprise Street, Brea Ca, 92821
Ph (800) 368-9700 Fax (800) 832-4688

E-mail: pmpl@pmpl.com Web Site: www.pmpl.com