

INSTALLATION INSTRUCTIONS

UPD-SERIES MOBILE CART SYSTEM

Step 1

Unpack the UPD cart. Place the base on a flat surface. Invert the base and insert the casters.

Step 2

Insert the two (2) 2" chrome tubes into the base receiving holes. Be sure to loosen the two (2) socket screws in the base to allow the tubes to be fully seated in the base. Once seated firmly tighten the two (2) socket screws against the tubes. (Do not over tighten).

If using the Optional PSD-1417 (Maximum load weight 18 Lbs). Insert the shelf over the chrome tubes adjust the shelf to the height desired (make sure to leave enough space for the plasma) secure the height by tightening the two (2) socket screws on the back.

If using the Optional PSD-EXT . Loosen the two (2) socket screws from the extension (top) and (bottom) Insert the extension to the tubes and tighten the (bottom) socket screws then insert the tubes on (top) and tighten the socket screws (Do not over tighten). (Note): Do not extend any 2" chrome posts beyond 84" high with the PSD-EXT collar.

Step 3

Install the plasma mount adapter over the (2) chrome tubes all ready installed. Make sure to secure the adapter in the center of the optional PSD-1417 (if applies) and the end of the tubes. Secure the adapter using two (2) socket screws tighten firmly against the tubes (Do not over tighten).

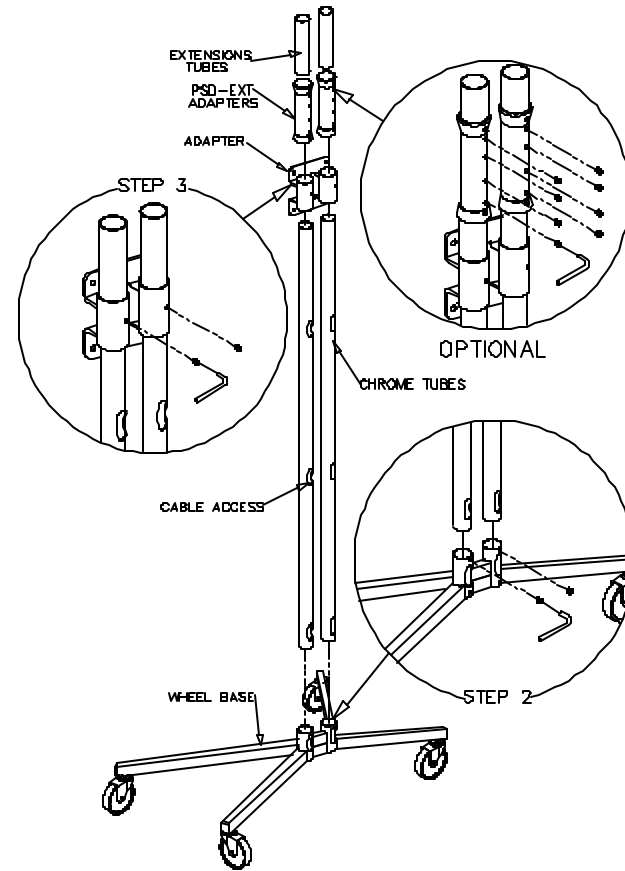
Step 4

FLAT- Secure the (PSB-FBP) Universal flat mount to the (PSD-SPA) adapter using the four (4) M10 bolts (firmly tightening the bolts).

TILT- Secure the (PSB-TBP) Universal flat mount to the adapter using the four (4) M10 bolts (firmly tightening the bolts).

Step 5

Raise the display with the PSM-FLAT/TILT SERIES mount attached to the display and insert the four (4) receiving tabs to the four (4) flanges found on the Universal (PSB-FBP) flat mount Push to the right and down to lock the display. Secure the display to the mount by using two (2) 6 (mm) x12 (mm) Slotted hex screws (supplied) for additional security.



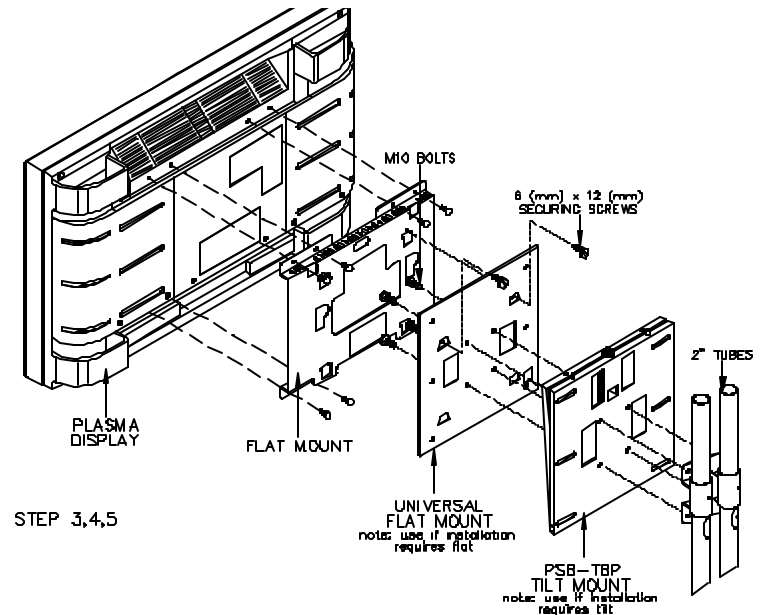
WARNING!

The UPD-MOBILE SYSTEM Series cart is designed for movement across smooth, Flat Hard carpeted surfaces. Extra care must be exercised against tipping when moving the cart on sloped surfaces or over edges. Failure to do so could result in serious personal injury.

NOTE: The UPD-MOBILE SYSTEM Series mobile carts are designed to carry maximum weight of 175lbs. between the combined weight of the display and accessory items.

CAUTION!

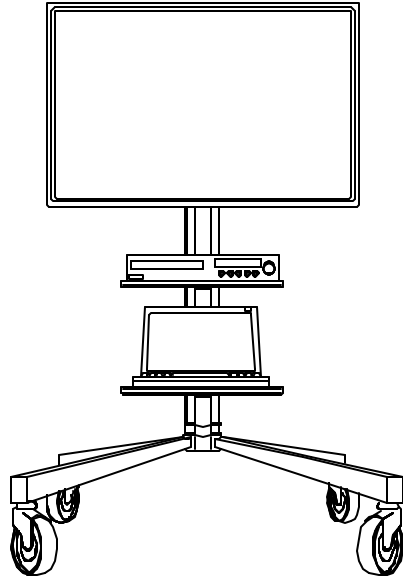
This cart is intended for use only with the maximum weights indicated. Use with appliances heavier than the maximum weight may result in instability causing possible injury.



WARNING!

The wall/ceiling/floor

Should be capable of supporting a weight of at least five (5) times the projector(s) or monitor(s) weight. If it cannot, the ceiling must be reinforced. Proper installation procedure by qualified personnel as outlined in the installation instructions must be adhered to. Failure to do so could result in serious personal injury.



For further information or ordering assistance
Contact us at the phone/address number shown
on the front of this page.



"We're Customer Driven"

INSTALLATION INSTRUCTIONS



UPD SERIES MOBILE CART

Supplying
the
world
with
superior
mounts

Progressive Marketing Products, Inc.

3130 E. Miraloma Avenue Anaheim, CA 92806
Ph (800) 368-0700 Fax (800) 632-4868
E-mail: mounts@pmpl.com Web Site: www.mounts.com