

IMPORTANT! Read entire instruction sheet before you start installation and assembly.

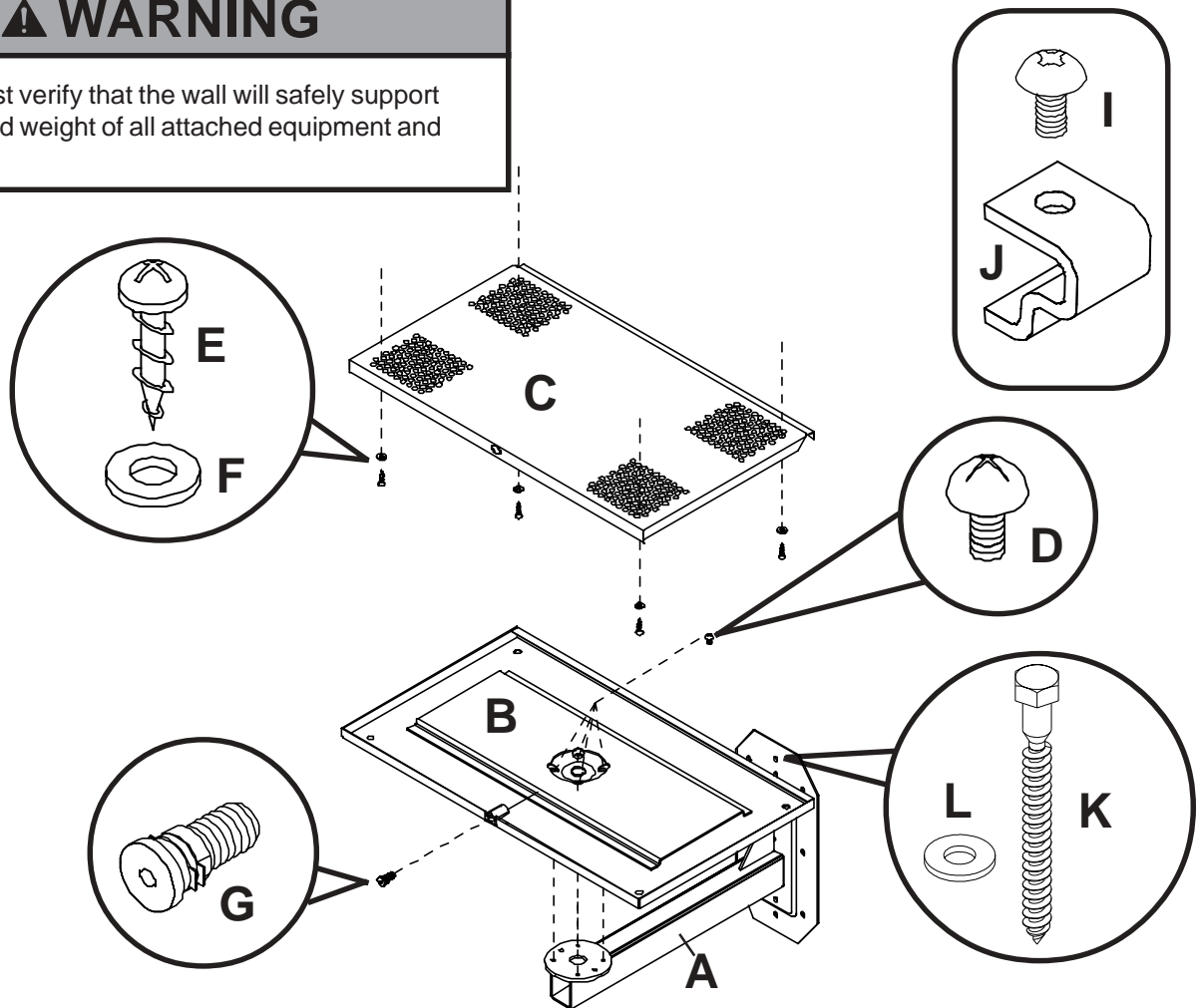


**MAXIMUM OSHPD LOAD
CAPACITY: 96 lb (43.5 kg)**

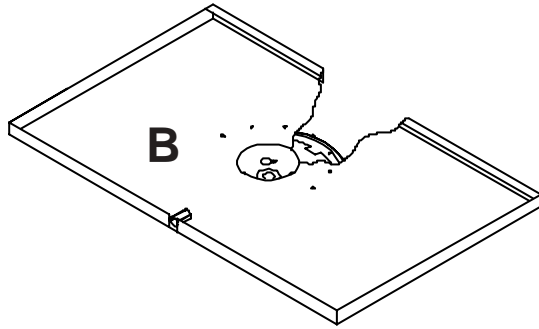
Parts List			PART #	QTY.	DESCRIPTION		
	PART #	QTY.	DESCRIPTION	G	3022-502	1	lock plug
A	2141-376	1	wall arm	H	0000-322	1	key (not shown)
B	120-0015	1	lower tray (LWB 530 only)	I	520-9250	4	M5 x .8 x 10 mm philips screw
	120-0002	1	lower tray (LWB 530T only)	J	2245-081	4	uni-clip
C	1436-373	1	upper tray (LWB 530 & 350T only)	K	520-1236	10	1/4" x 4" lag bolt
D	510-9107	4	1/4" philips machine screw	L	540-9401	10	1/4 x 3/4 x 1/16 washer
E	500-9006	4	#10 philips particle board screw				
F	540-9400	4	small flat washer				<i>Some parts may appear slightly different than illustrated.</i>

⚠ WARNING

- Installer must verify that the wall will safely support the combined weight of all attached equipment and hardware.



- 1** Make sure that swivel race tab on lower tray (**B**) is positioned as shown.

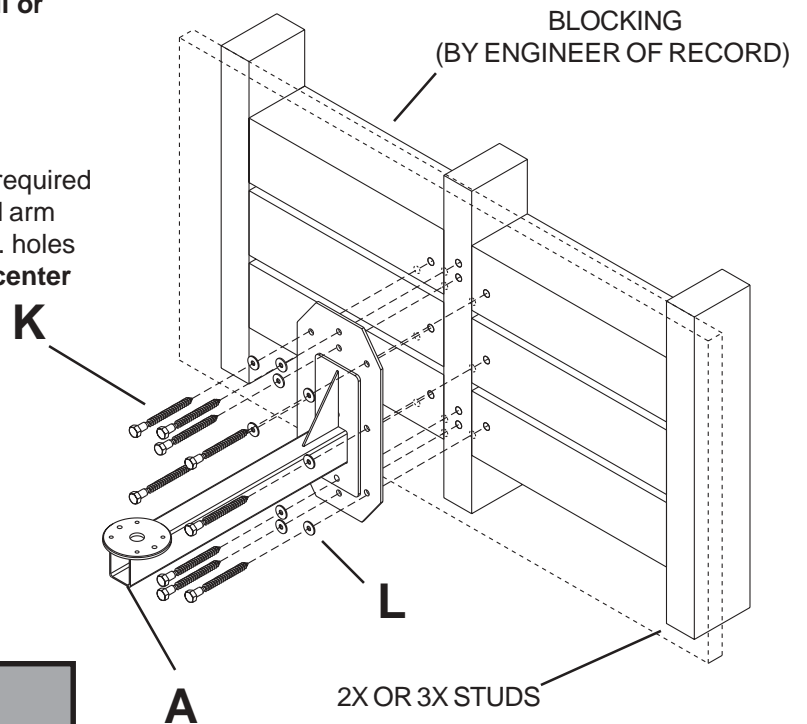


- 2** Skip to pg. 3 if attaching to a concrete wall or pg. 4 if attaching to concrete block.

Note: If you are installing to a metal stud wall, please refer to the accompanying metal stud instruction sheet.

For Wood Stud Walls add wood blocking as required to accommodate wall arm hole pattern. Use wall arm (**A**) as a template to drill ten 5/32" (4 mm) dia. holes to a minimum depth of 4" (102 mm) into **stud center and blocking**. Attach wall arm using ten 1/4" x 4" lag bolts (**K**) and 10 washers (**L**).

Skip to step 4.



⚠ WARNING

- Tighten wood screws so that wall plate is firmly attached, but do not overtighten. Overtightening can damage the screws, greatly reducing their holding power.
- Never tighten in excess of 80 in • lb (9 N.M.).
- Make sure that mounting screws are anchored into the center of the studs and wood blocking. The use of an "edge to edge" stud finder is highly recommended.

⚠ WARNING

- Concrete must be 3000 psi density minimum. Lighter density concrete may not hold concrete anchor.
- Make sure that the wall will safely support four times the combined load of the equipment and all attached hardware and components. Direct pull test to 800 lbs. or torque to 10 ft-lbs to test strength of concrete.

2 For Concrete Walls Order OP-ACC 204.

Making sure that it is level, use wall arm (A) as a template to mark holes. Use an ANSI drill bit size between 0.255" - 0.259" to drill eight holes to a minimum depth of 3.25" (83 mm) as shown in **figure 3.1.1**. Blow the hole clean of dust and other material.

Attach using washers and bolts as shown in **figure 3.1.2**

⚠ WARNING

- Tighten concrete anchor bolts firmly, but do not overtighten. Overtightening can damage the bolts, greatly reducing their holding power.
- Never tighten in excess of 80 in • lb (9 N.M.).

⚠ WARNING

- Concrete anchors are **not** intended for attachment to concrete wall covered with a layer of plaster, drywall, or other finishing material.

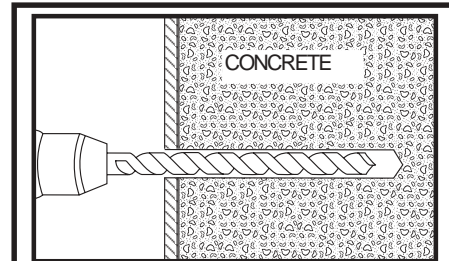


Fig. 3.1.1

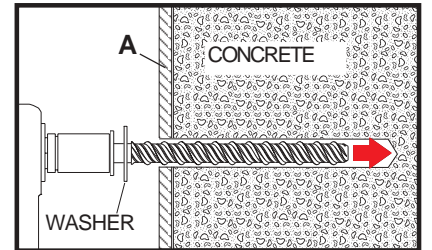


Fig. 3.1.2

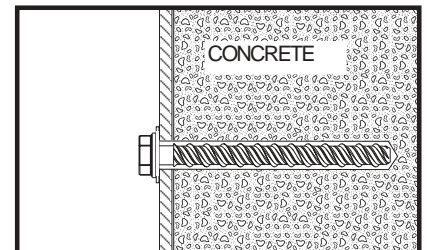
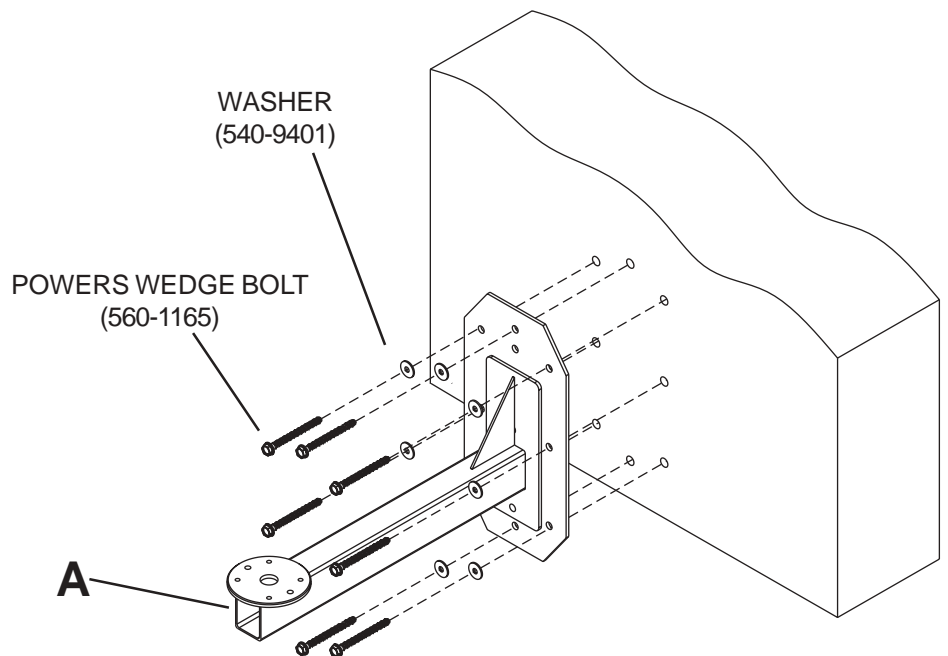
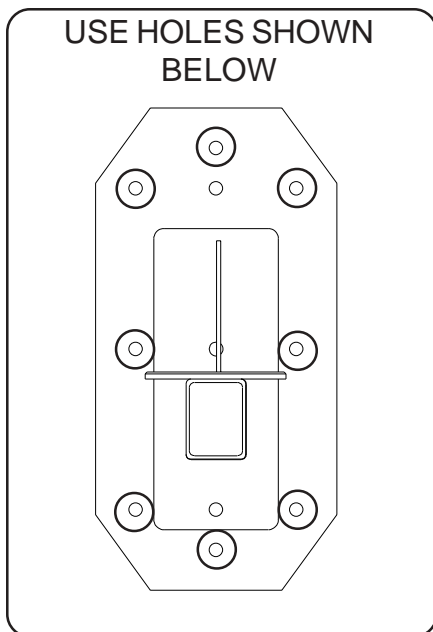


Fig. 3.1.3



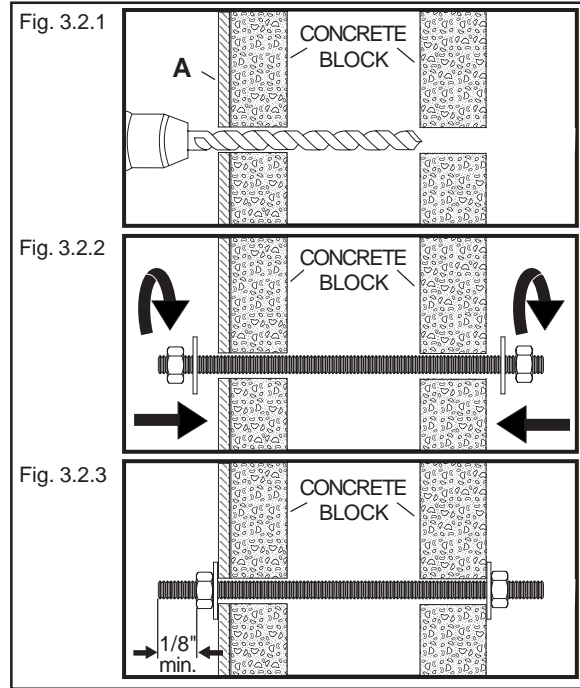
⚠ WARNING

- When installing Peerless wall mounts on cinder block, verify that you have a minimum of 1-3/8" of actual concrete surface in the hole to be used for the concrete anchors. Do not drill into mortar joints! Be sure to mount in a solid part of the block, generally 1" minimum from the side of the block. Cinder block must meet ASTM C-90 specifications. It is suggested that a standard electric drill on slow setting is used to drill the hole instead of a hammer drill to avoid breaking out the back of the hole when entering a void or cavity.
- Make sure that the wall will safely support the combined load of the equipment and all attached hardware and components.

2 For Concrete Block Walls Order OP-ACC 307.

Making sure that it is level, use wall arm (A) as a template to mark holes. Drill eight .281" holes through block as shown in **figure 3.2.1**. Blow the hole clean of dust and other material.

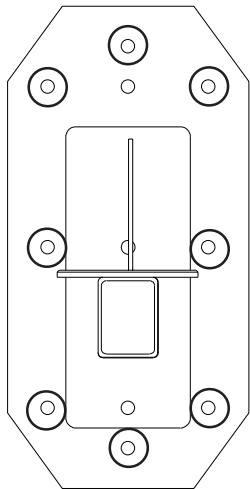
Attach using washers, threaded rods, and lock nuts as shown in **figure 3.2.2**.



⚠ WARNING

- Tighten screws firmly, but do not overtighten. Overtightening can damage the bolts, greatly reducing their holding power.
- Never tighten in excess of 80 in. • lb (9 N.M.).
- Distance between ends of threaded rod and lock nuts after tightening must be 1/8" minimum..

USE HOLES SHOWN
BELOW



LOCK NUT
(530-1030)

THREADED ROD
(580-1143)

A

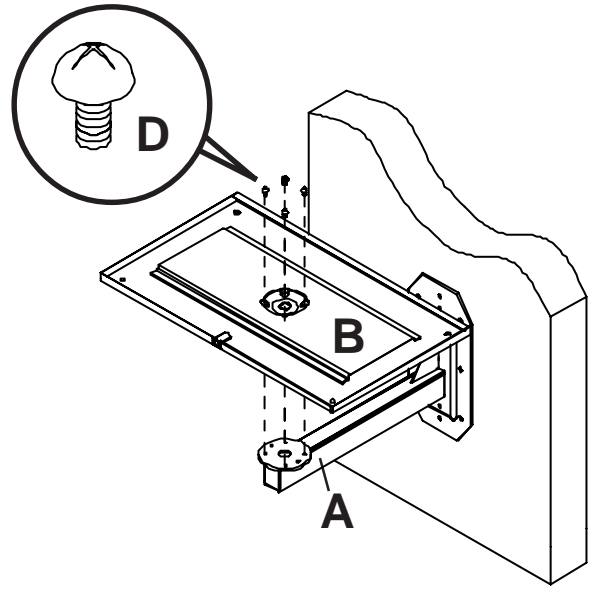
WASHER
(540-1061)

WASHER
(540-1061)

3

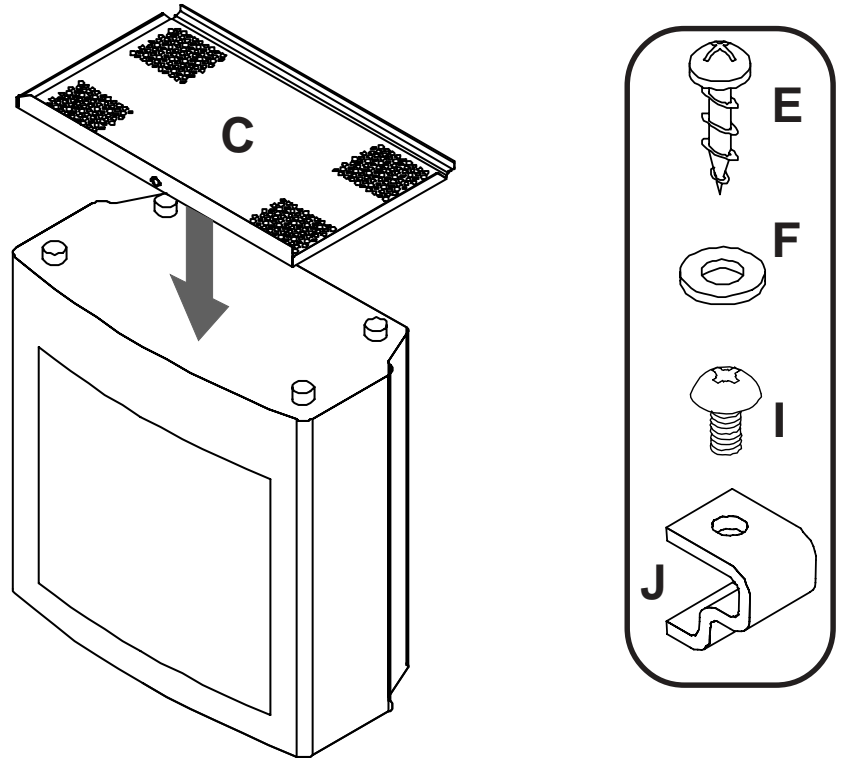
Attach lower tray (B) to wall arm (A) using four 1/4-20 x 3/8 philips screws (D). Tighten securely. If the holes in the race on bottom of tray are not aligned, use a screwdriver and hammer to gently tap the race so that the holes are visible.

Note: The race on the tray bottom is extremely difficult to swivel without the weight of the TV on the tray.



4

Turn TV upside down on flat stable surface. Using four sets of screws (E) and washers (F) (for attachment to mounting bosses if present), or uni-clips (J) and M5 screws (I) (see instruction card in fastener pack), or a combination of both attach upper tray (C) to TV bottom. Attach at four places as close to the four corners of the TV bottom as possible.

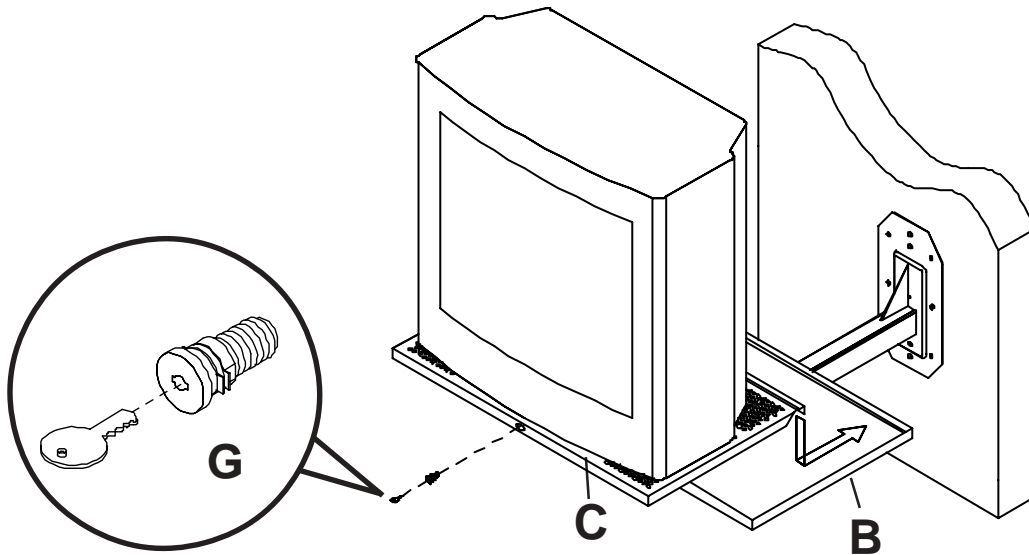


5

Insert key into lock plug (G). Attach TV/upper tray (C) to lower tray (B) as shown.

⚠ WARNING

- Always use an assistant or mechanical lifting equipment to safely lift and position the television.



5-1

Slide upper tray (C) back until fully engaged. Firmly hold in position while you insert and tighten lock plug (G), several turns, until fully engaged.

Note: To remove key, slot must be in the horizontal position. This may require that you back off 1/4 turn.

