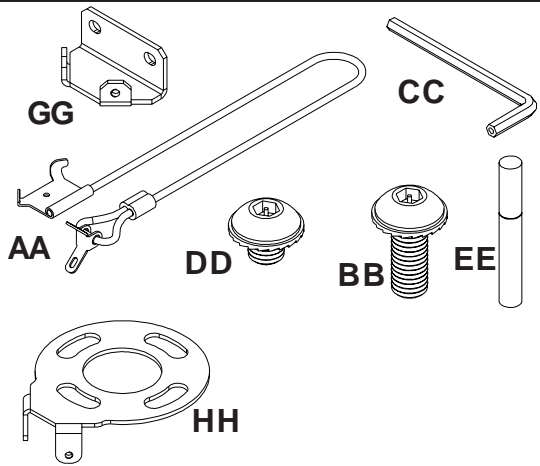


**IMPORTANT!** Read entire instruction sheet before you start installation and assembly.

Before you start check the parts list below to make sure all of the parts shown are included.

<b>Parts List</b>		
Description	Qty.	Part Number
<b>AA</b> cable assembly, loop end & pad	1	600-0019
<b>BB</b> #10-32 x 1/2" serrated washer head socket pin screw (for use with Vector Pro mounts only)	1	510-1055
<b>CC</b> 4 mm security allen wrench	1	560-9646
<b>DD</b> #10-32 x 13/64" serrated washer head socket pin screw	2	510-1121
<b>EE</b> super glue tube	1	600-0017
<b>FF</b> alcohol pad (not shown)	1	600-0018
<b>GG</b> cable bracket (for use with Encore mounts only)	1	055-1010
<b>HH</b> PRS interface plate (for use with PRS-1 mounts only)	1	580-1070



Note: Actual parts may appear slightly different than illustrated.

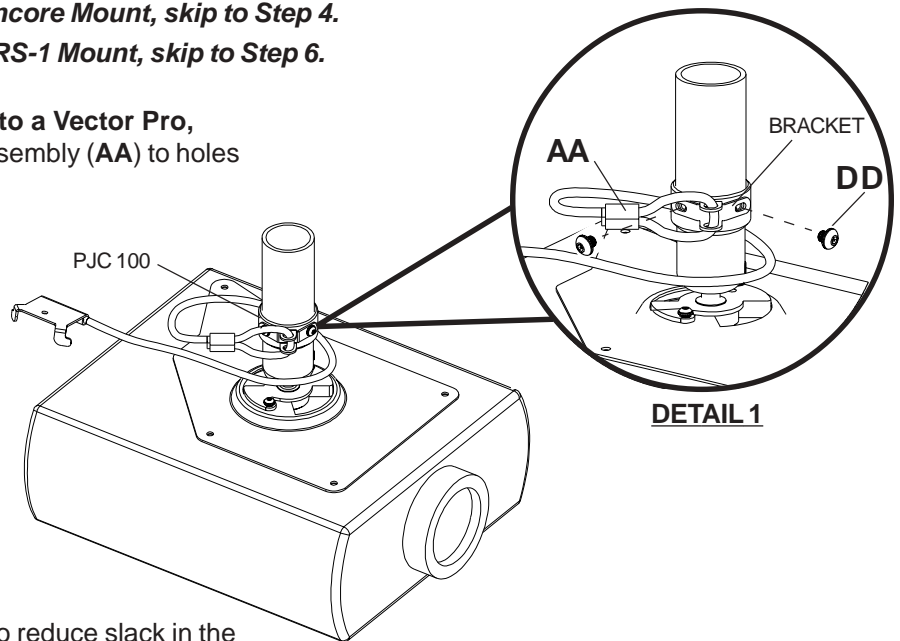
*If installing the security cable onto an Encore Mount, skip to Step 4.*

*If installing the security cable onto an PRS-1 Mount, skip to Step 6.*

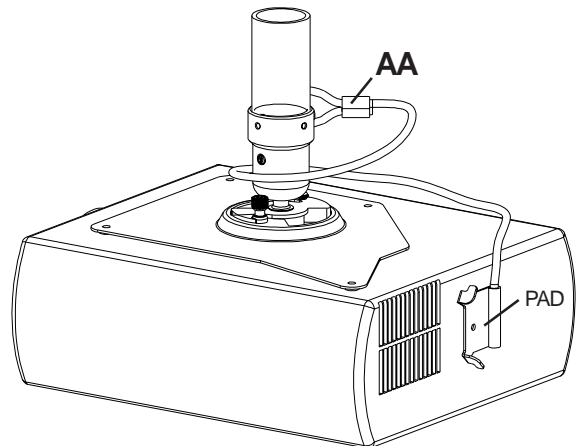
- 1** If installing the security cable onto a Vector Pro, align holes of bracket from cable assembly (AA) to holes on PJC 100 as shown in detail 1. Fasten cable assembly (AA) to PJC 100 with two #10-32 serrated washer head socket pin screws (DD), and tighten using 4 mm security allen wrench (CC).

**Note:** To attach pad to projector using security screw (option for PJC 100 mounts only) go to step 3.

**Note:** If needed, when installing the cable assembly (AA), wrap the assembly around the PJC 100 to reduce slack in the cable.



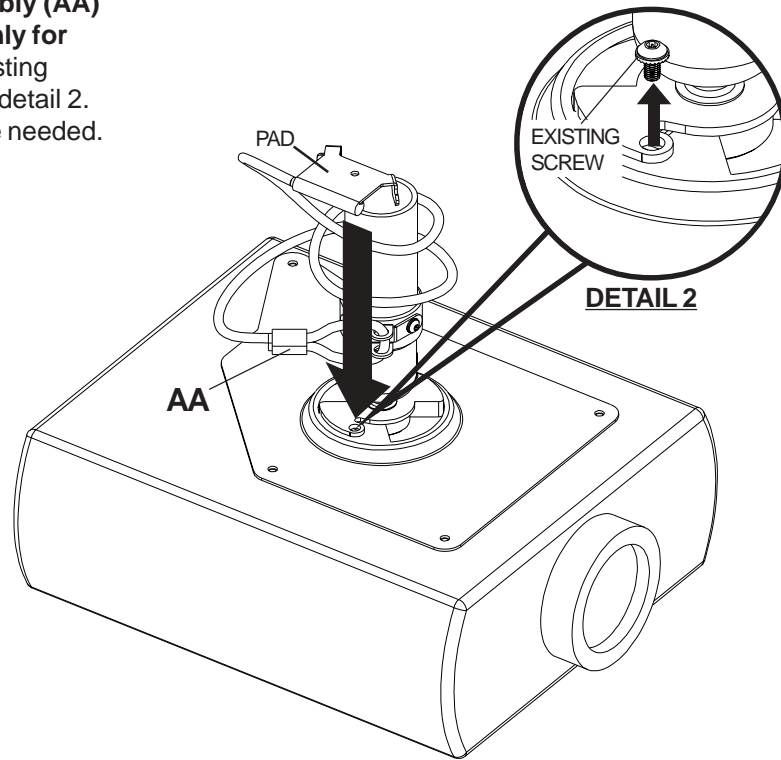
- 2** For attachment of cable assembly (AA) using super glue, clean a flat surface on the projector with alcohol pad (FF). Thinly cover pad from cable assembly (AA) with super glue from super glue tube (EE) and hold firmly for 20 - 30 seconds on newly cleaned area.



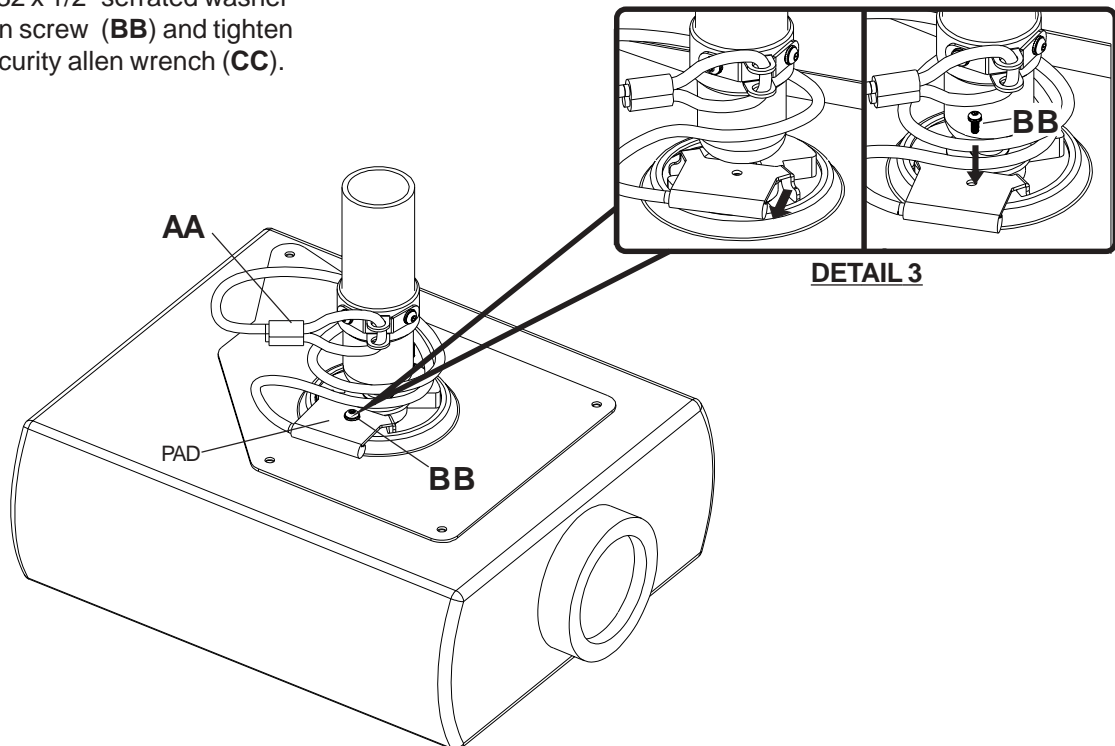
**⚠ WARNING**

- Use caution when using super glue!

- 3** For attachment of cable assembly (AA) using security screw (option only for Vector Pro mounts), remove existing screw from PJC 100 as shown in detail 2. **Note:** This screw will no longer be needed.



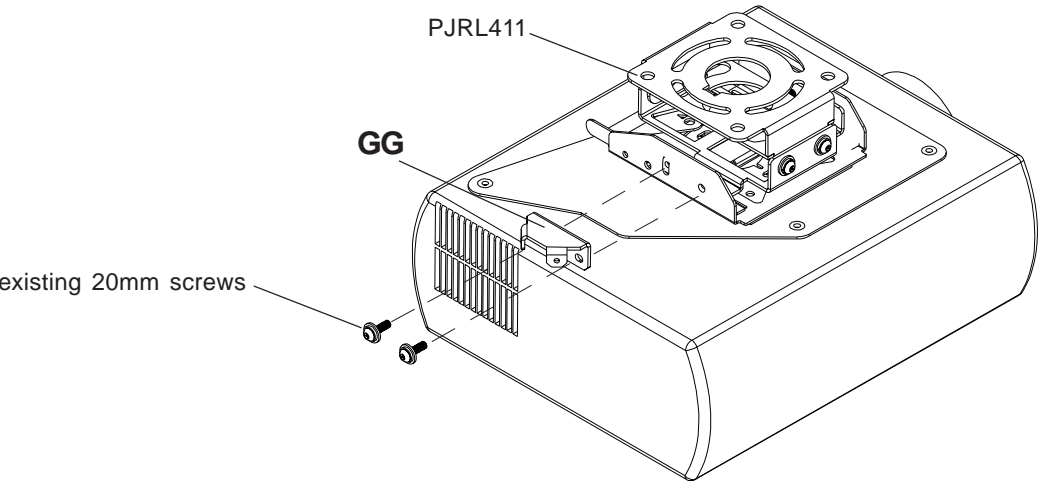
- 3-1** Place pad from cable assembly (AA) on PJC 100, hook feet of pad under lip of adapter plate as shown above and right in detail 3. Fasten pad from cable assembly (AA) with #10-32 x 1/2" serrated washer head socket pin screw (BB) and tighten using 4 mm security allen wrench (CC).



4

If installing security cable onto an Encore Mount, remove two 20 mm screws from PJRL 411 assembly as indicated below. Attach cable bracket (GG) using existing 20 mm screws.

**Note:** The security cable can be attached to the Encore Mount on any one of the four sides of the PJRL 411.

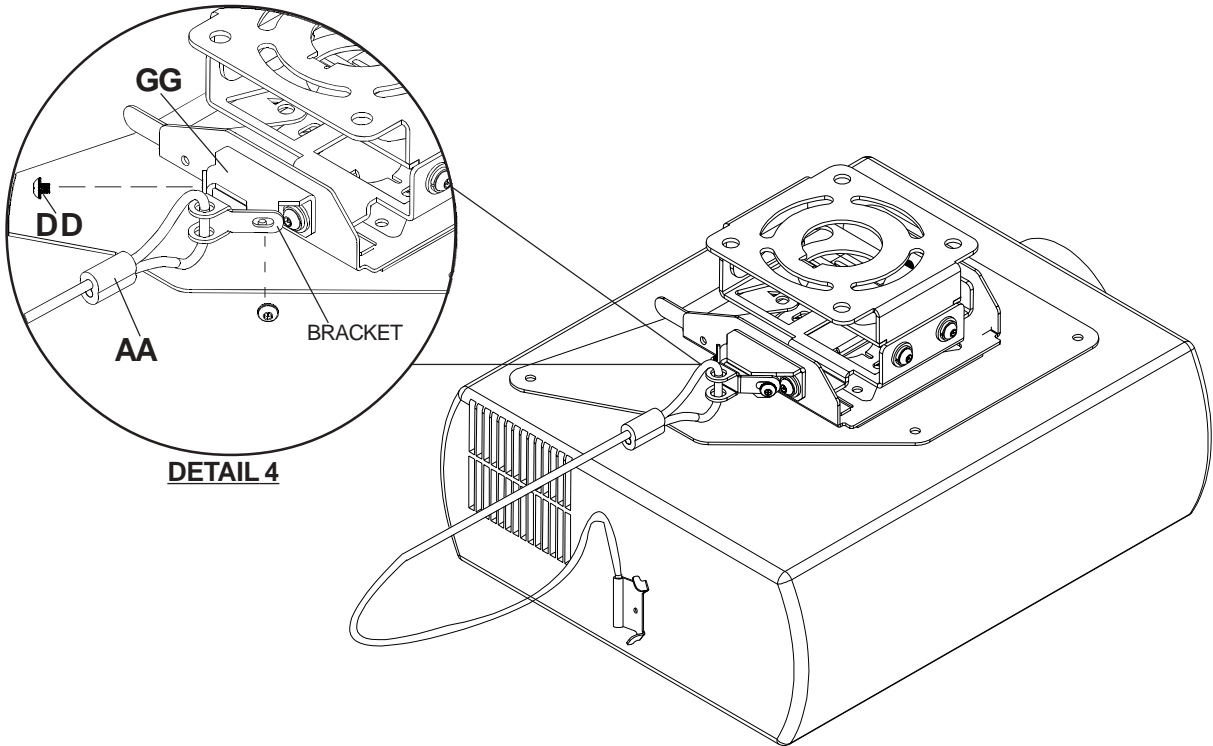


5

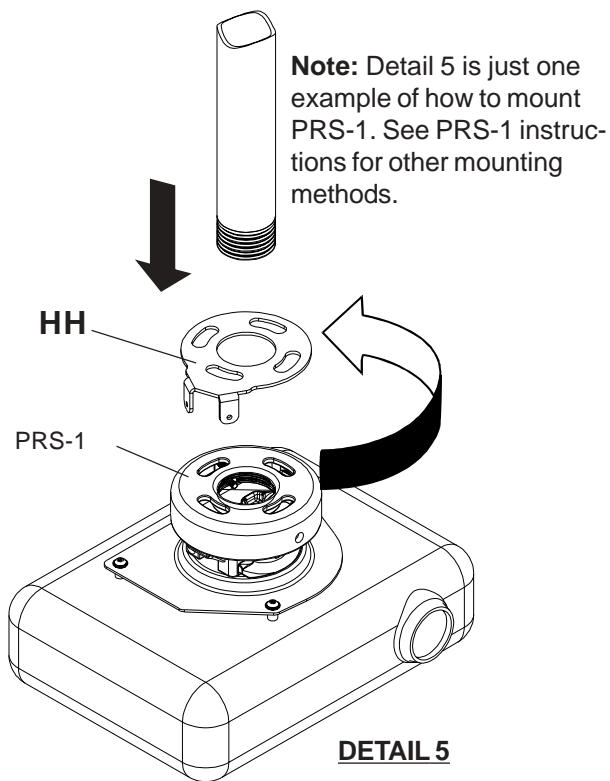
For attachment of cable assembly (AA) using super glue, align holes of bracket from cable assembly (AA) to holes on cable bracket (GG) as shown in detail 4. Fasten cable assembly (AA) to cable bracket (GG) with two #10-32 serrated washer head socket pin screws (DD), and tighten using 4 mm security allen wrench (CC). Clean a flat surface on the projector with alcohol pad (FF). Thinly cover pad from cable assembly (AA) with super glue from super glue tube (EE) and hold firmly for 20 - 30 seconds on newly cleaned area.

**⚠ WARNING**

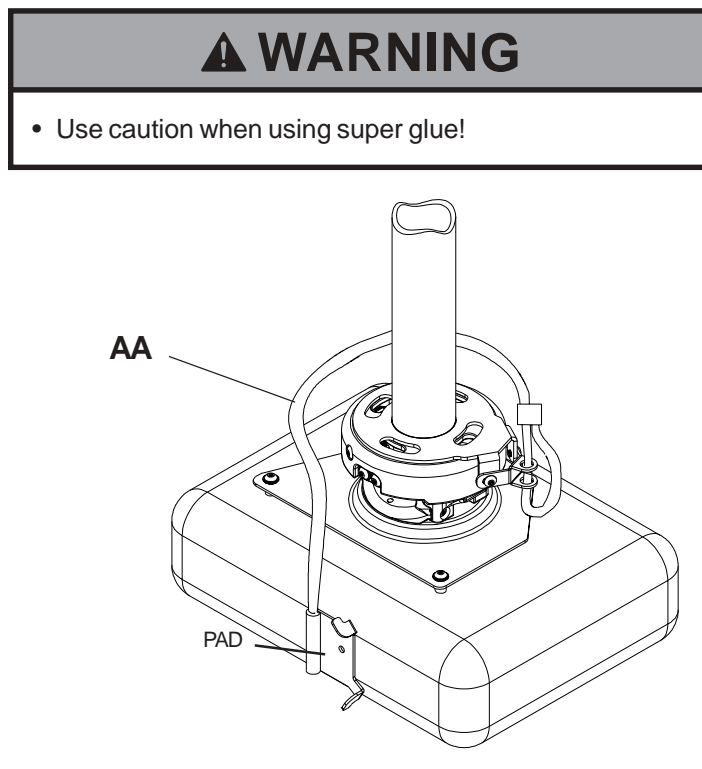
- Use caution when using super glue!



- 6** If installing the security cable onto a PRS-1, place PRS interface plate (HH) on top on PRS-1 mount, making sure that all slots are aligned. Then mount using instructions provided with PRS-1 mount.



- 8** For attachment of cable assembly (AA) using super glue, clean a flat surface on the projector with alcohol pad (FF). Thinly cover pad from cable assembly (AA) with super glue from super glue tube (EE) and hold firmly for 20 - 30 seconds on newly cleaned area.



- 7** Fasten cable assembly (AA) to PRS interface plate (HH) with two #10-32 serrated washer head socket pin screws (DD), and tighten using 4 mm security allen wrench (CC).

