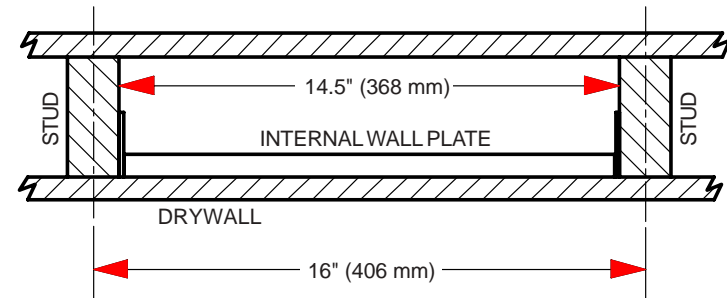


EXPLODED VIEW - INSTALLATION



TOP VIEW - CROSS-SECTION OF WALL

The **Internal Wall Plate** is designed for attachment between two wood studs inside the supporting wall. Two electrical box knockouts are provided as well as a threaded hole pattern to accommodate most Peerless wall mount TV brackets. Screws to attach the TV bracket are included. Installation screws must be provided by the installer.

INTERNAL WALL PLATE MODEL # WSP 414, WSP 414S

- 11 gage steel construction.
- Scratch resistant black fused epoxy finish.
- Accepts most Peerless wall mount TV brackets.
- Screws for attachment of TV bracket included.
- Easiest installed during construction of the wall.
- Mounts *inside wall* between two wood studs on 16" (406 mm) centers [14.5" (368 mm) edge to edge].
- Screws for attachment to inside of wall *not included*.
- Features two electrical box knockouts designed for use with Raco / Hubbel 420 or equivalent electrical box.

For dimensions, weight, and shipping weight see page 2.

Architects Specifications:

The Internal Wall Plate shall be a Peerless model WSP _____ and shall be located where indicated on the plans. It shall be constructed of 11 gage cold rolled steel. It shall contain two electrical box knockouts and a 1/4-20 threaded hole pattern to accept most Peerless TV wall mounts. It shall include screws for attachment of a TV wall mount. The finish shall be scratch resistant Black or Silver Fused Epoxy. Assembly and installation shall be done according to instructions provided by the manufacturer.

**TECHNICAL DATA SHEET
INTERNAL WALL PLATE**

Peerless Industries, Inc.

3215 W. North Ave.

Melrose Park, IL 60160

www.peerlessindustries.com

phone: (708) 865-8870

fax: (708) 865-2941

SHEET NO: 031-9501-1 ISSUED: 1-28-98 REVISION: 07-29-04

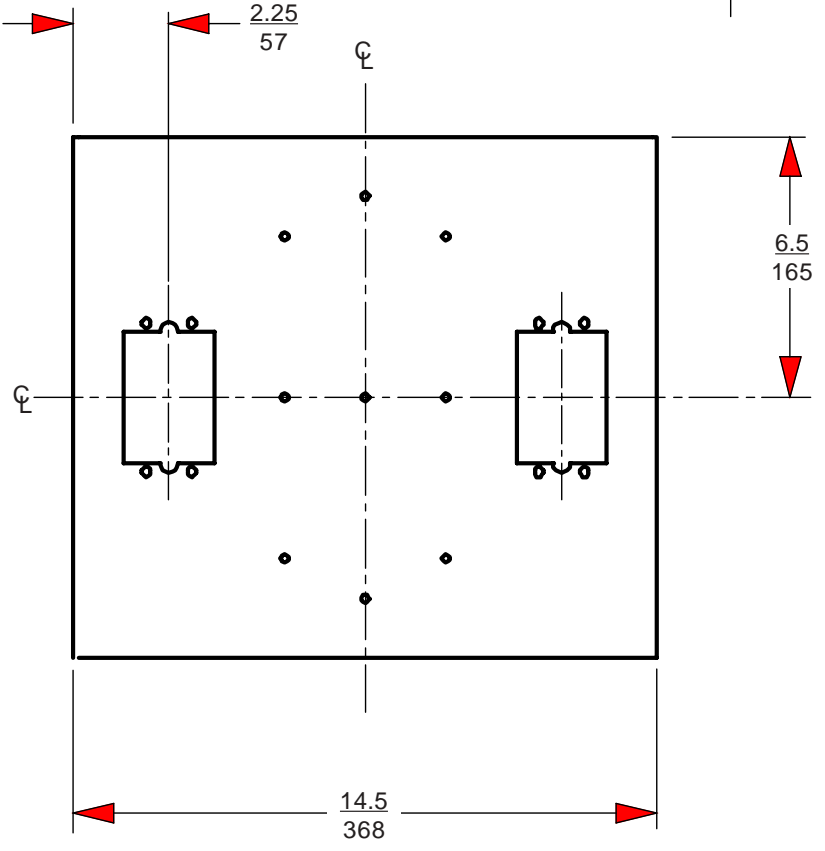
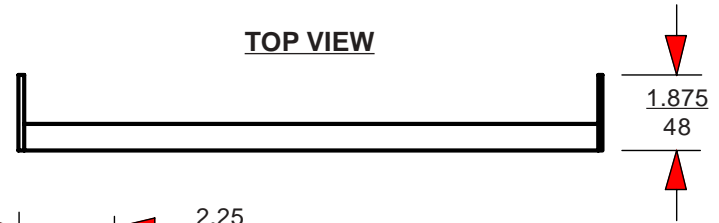
**INTERNAL WALL PLATE MODELS
WSP 414 & WSP 414S**

WEIGHT	8 lbs. (3.7 kg.)
SHIPPING WEIGHT	9 lbs. (4 kg.)

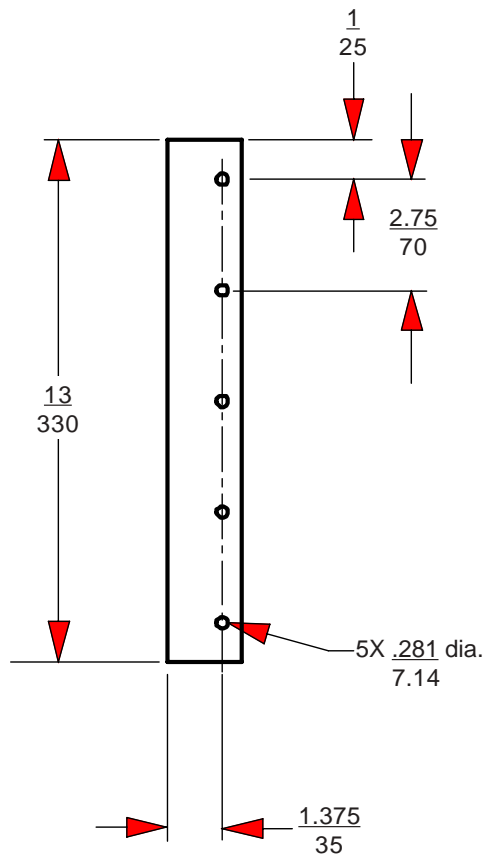
Note: Shipping weight based on single unit shipment.
Per unit shipping weight may be less for bulk orders.

NOTES:
ALL DIMENSIONS: $\frac{\text{inch}}{\text{mm}}$ UNLESS OTHERWISE SPECIFIED
CL = CENTER LINE
PART IS SYMMETRICAL
MATERIAL: 11 GAUGE COLD ROLLED STEEL

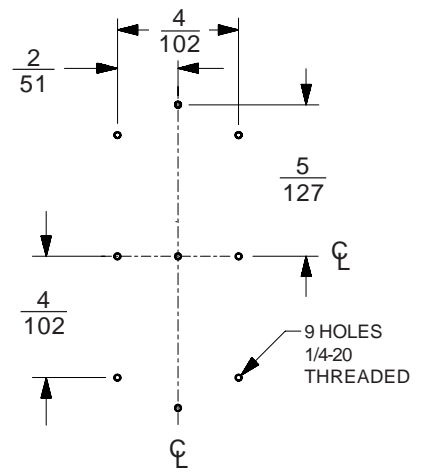
TOP VIEW



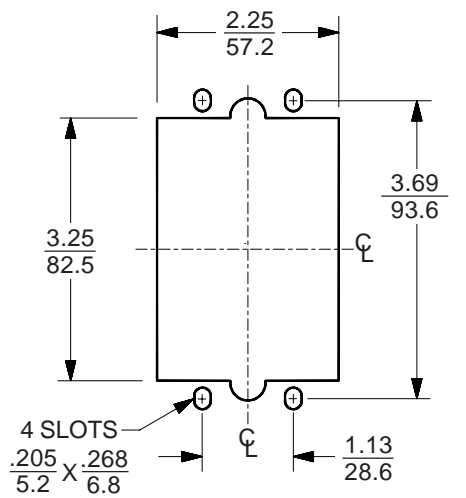
FRONT VIEW



SIDE VIEW



MOUNTING HOLE PATTERN



ELECTRICAL BOX KNOCKOUT