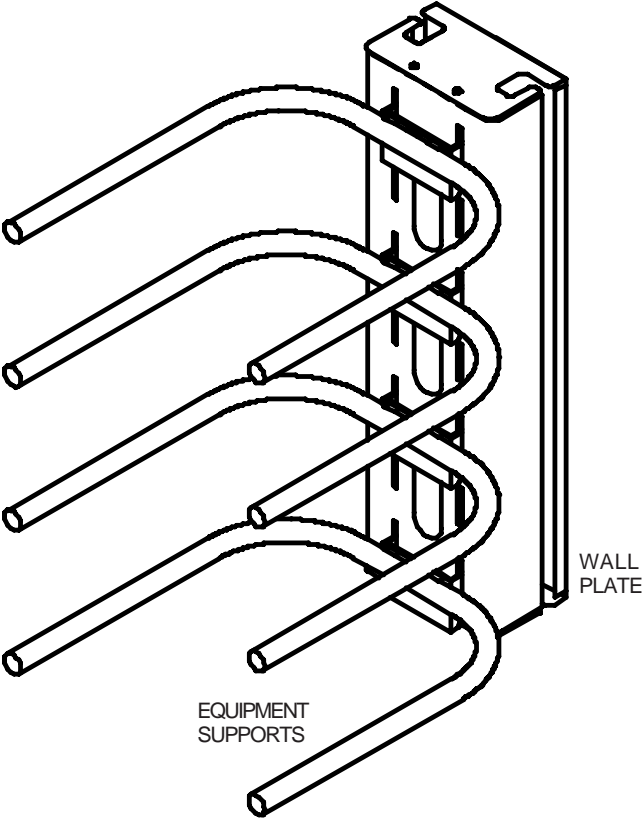


The Electronics Tower™ is an adjustable system with four equipment supports designed for audio/video components.

Features:

- Four equipment supports with foam pads
- Choice of seven equipment support positions [at 3" (76 mm) increments]
- Additional equipment supports can be ordered under model ACC 102
- Cable management
- Heavy duty steel construction
- Includes mounting hardware for attachment to a wood stud wall



ARCHITECTS SPECIFICATIONS

The Electronics Tower shall be a Peerless model _____. It shall feature four equipment supports and a wall plate offering multiple equipment support positions (7 total) at 3" (76 mm) increments. It shall feature cable management to conceal cables and wires within the wall plate. It shall be constructed of steel and steel tubing and finished in scratch resistant black fused epoxy. It shall include screws for attachment to a wood stud wall or wood beam. Assembly and installation shall be done according to instructions provided by the manufacturer.

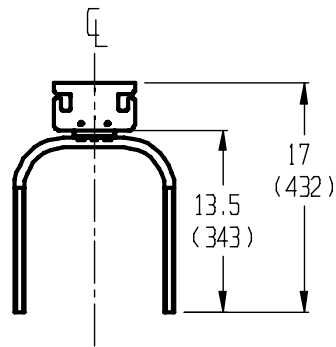


Peerless Industries, Inc. 3215 W. North Ave. Melrose Park, IL 60160
 708-865-8870 800-865-2112 Fax 708-865-2941 www.peerlessindustries.com

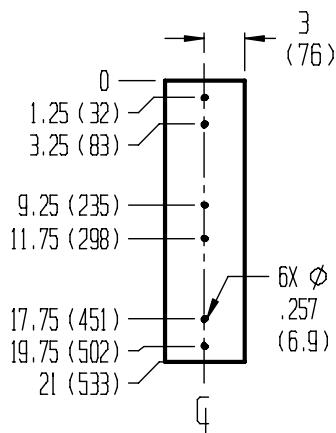
TECHNICAL DATA SHEET

The Electronics Tower™

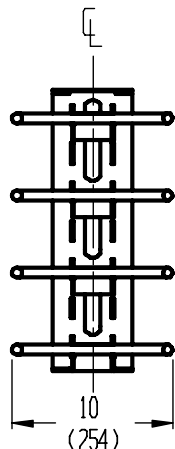
Issued: 1-26-00 Sheet #021-9503-2 04-05-05



TOP VIEW

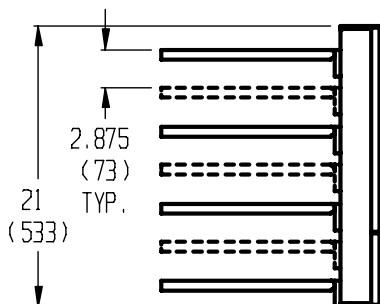


DETAIL-
MOUNTING TEMPLATE



FRONT VIEW

NOTE: CHOICE OF SEVEN POSITIONS FOR FOUR EQ. SUPPORT SHELVES



SIDE VIEW

THE ELECTRONIC TOWER			Notes: ALL DIMENSIONS: inch (mm) ALL WEIGHTS: lb (kg) MATERIAL: COLD ROLLED STEEL AND STEEL TUBING FINISH: BLACK FUSED EPOXY
WEIGHT	SHIPPING WEIGHT	MAXIMUM LOAD (EACH SHELF)	
18.4 (8.3)	20 (9.1)	15.0 (6.8)	



Peerless Industries, Inc. 3215 W. North Ave. Melrose Park, IL 60160
708-865-8870 800-865-2112 Fax 708-865-2941 www.peerlessindustries.com

TECHNICAL DATA SHEET

The Electronics Tower™

Issued: 1-26-00 Sheet #021-9503-2 04-05-05

PAGE 2 of 2