

**Maximum Load Capacity (Each Shelf):  
15.00 lb (7.0 kg)**

*Read instruction sheet before you start installation and assembly.*

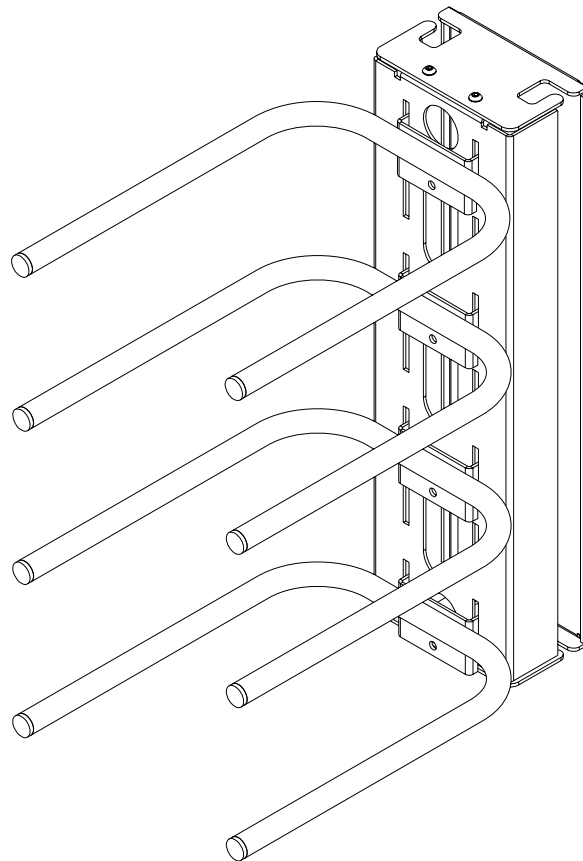
**⚠ WARNING**

- When installing Peerless wall mounts on cinder block, verify that you have a minimum of 1-3/8" of actual concrete surface in the hole to be used for the concrete anchors. Do not drill into mortar joints! Be sure to mount in a solid part of the block, generally 1" minimum from the side of the block. Cinder block must meet ASTM C-90 specifications. It is suggested that a standard electric drill on slow setting is used to drill the hole instead of a hammer drill to avoid breaking out the back of the hole when entering a void or cavity.
- Concrete must be 2000 psi density minimum. Lighter density concrete may not hold concrete anchor.
- Make sure that the wall will safely support four times the combined load of the equipment and all attached hardware and components.

**IMPORTANT! Turn to the appropriate page for your wall installation.**

**Installations:**

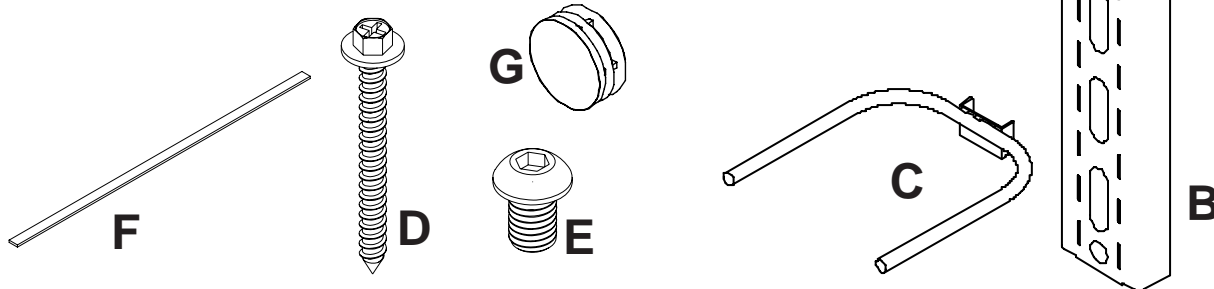
- To Wood Stud Walls ..... page 2**
- To Solid Concrete, Cinder Block, and Brick Walls ..... page 3**



Before you start make sure all parts listed are included with your product.

## Parts List

Description	Qty	PM 610	PM 610S	PM 610W
		Part #	Part #	Part #
<b>A</b> wall bracket	1	021-1035	021-4035	021-2035
<b>B</b> shelf bracket	1	021-1027	021-4027	021-2027
<b>C</b> equipment support	4	021-1031	021-4031	021-2031
<b>D</b> #14 x 2.5" wood screw	5	5S1-015-C03	5S1-015-C03	5S1-015-C04
<b>E</b> 1/4-20 x 3/8" socket head screw	4	520-2015	520-2015	520-2028
<b>F</b> VCR foam	8	599-3802	599-3802	599-3802
<b>G</b> endcap	8	590-1077	590-1077	590-2072
<b>H</b> 5/32" allen wrench (not shown)	1	560-9706	560-9706	560-9706

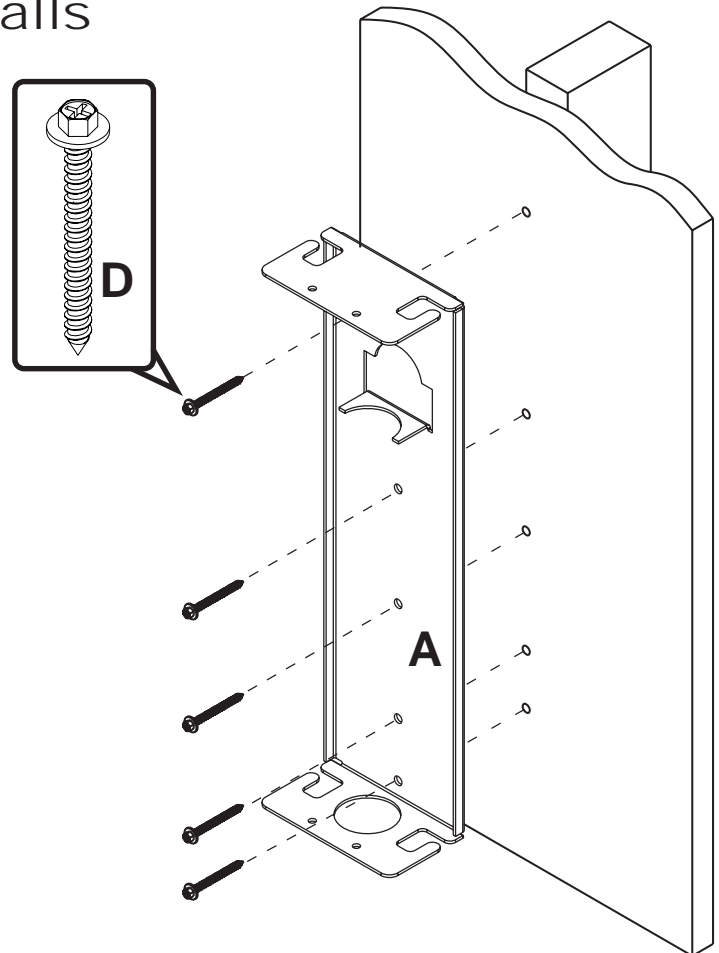


## Installation to Wood Stud Walls

- 1 Drill five 5/32" (4 mm) dia. holes to a minimum depth of 2.5" (64 mm) into **stud center**. Attach wall bracket (**A**) using #14 x 2.5" (6 mm x 65 mm) wood screws (**D**).

### ⚠ WARNING

- Tighten wood screws so that wall plate is firmly attached, but do not overtighten. Overtightening can damage the screws, greatly reducing their holding power.
- Never tighten in excess of 80 in • lb (9 N.M.).
- Make sure that mounting screws are anchored into the center of the studs. The use of an "edge to edge" stud finder is highly recommended.



## ⚠ WARNING

- When installing Peerless wall mounts on cinder block, verify that you have a minimum of 1-3/8" of actual concrete surface in the hole to be used for the concrete anchors. Do not drill into mortar joints! Be sure to mount in a solid part of the block, generally 1" minimum from the side of the block. Cinder block must meet ASTM C-90 specifications. It is suggested that a standard electric drill on slow setting is used to drill the hole instead of a hammer drill to avoid breaking out the back of the hole when entering a void or cavity.
- Concrete must be 2000 psi density minimum. Lighter density concrete may not hold concrete anchor.
- Make sure that the wall will safely support four times the combined load of the equipment and all attached hardware and components.

## Installation to Solid Concrete, Cinder Block, and Brick Walls

Two sets of Alligator® concrete anchors (ACC 203) are required.

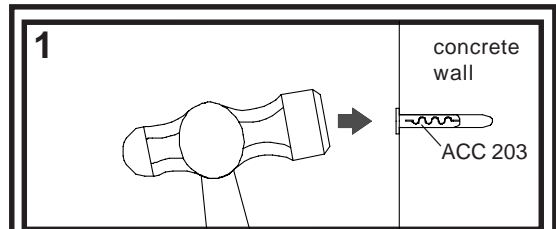
- 2** Use wall bracket (A), making sure that it is level, as a template to mark holes. Drill 1/4" (6 mm) dia. holes to a minimum depth of 2.5" (64 mm). Insert anchors in holes flush with wall as shown (right). Place wall bracket (A) over anchors and secure with #14 x 2.5" (6 mm x 65 mm) wood screws. Tighten all fasteners.

## ⚠ WARNING

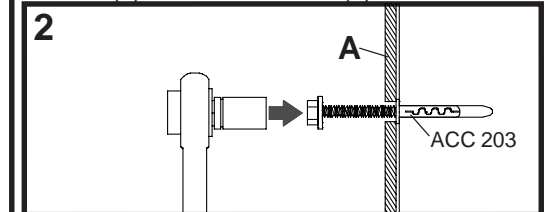
- Tighten wood screws firmly, but do not overtighten. Overtightening can damage the screws, greatly reducing their holding power.
- Never tighten in excess of 80 in • lb (9 N.M.).

## ⚠ WARNING

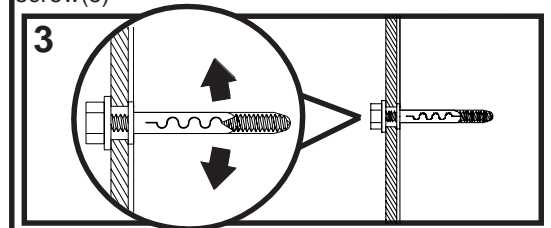
- Concrete anchors are **not** intended for attachment to concrete wall covered with a layer of plaster, drywall, or other finishing material. If mounting to concrete wall covered with plaster/drywall is unavoidable, plaster/drywall (up to 5/8" thick) must be counterbored as shown below. If plaster/drywall is thicker than 5/8", custom fasteners must be supplied by installer.



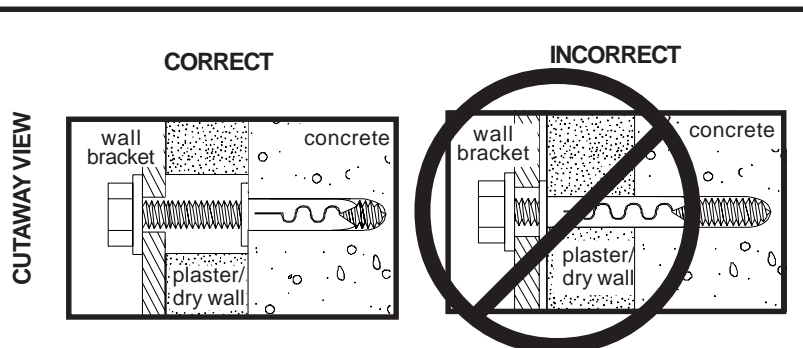
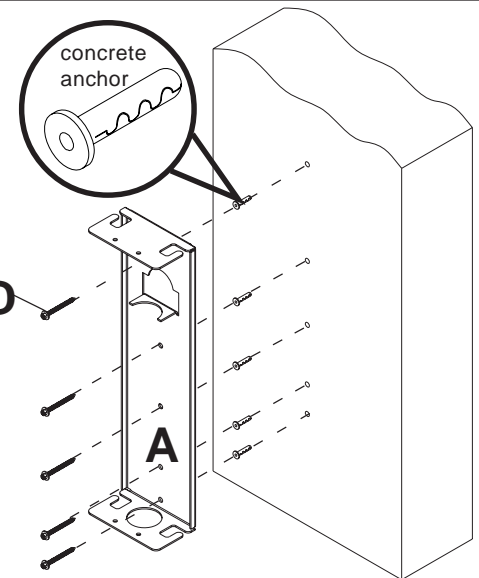
Drill hole(s) and insert anchor(s)



Place bracket (A) over anchor(s) and secure with screw(s)

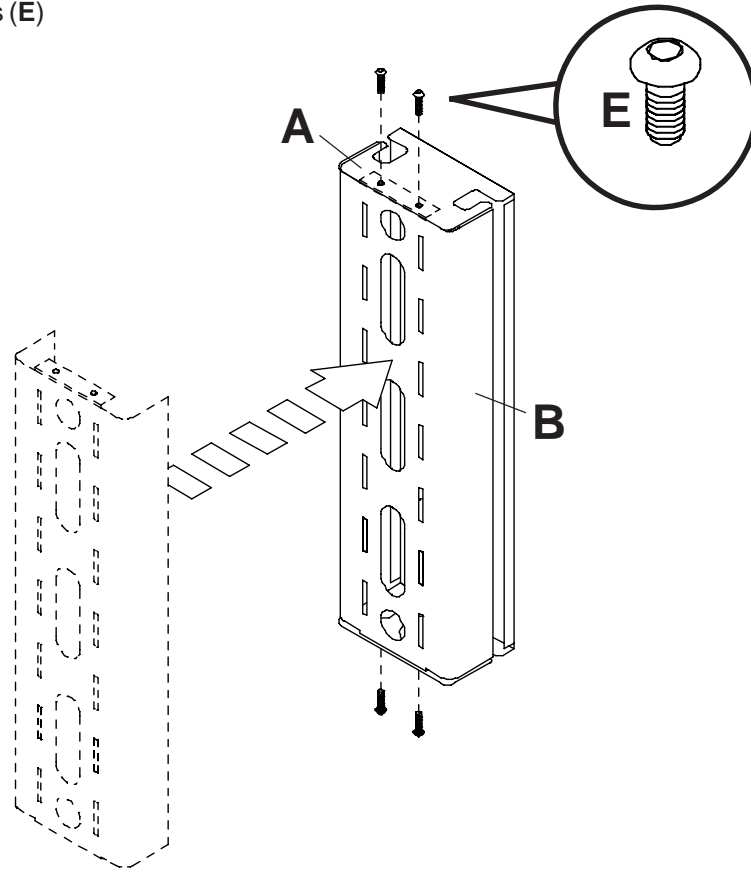


Tighten all fasteners



3

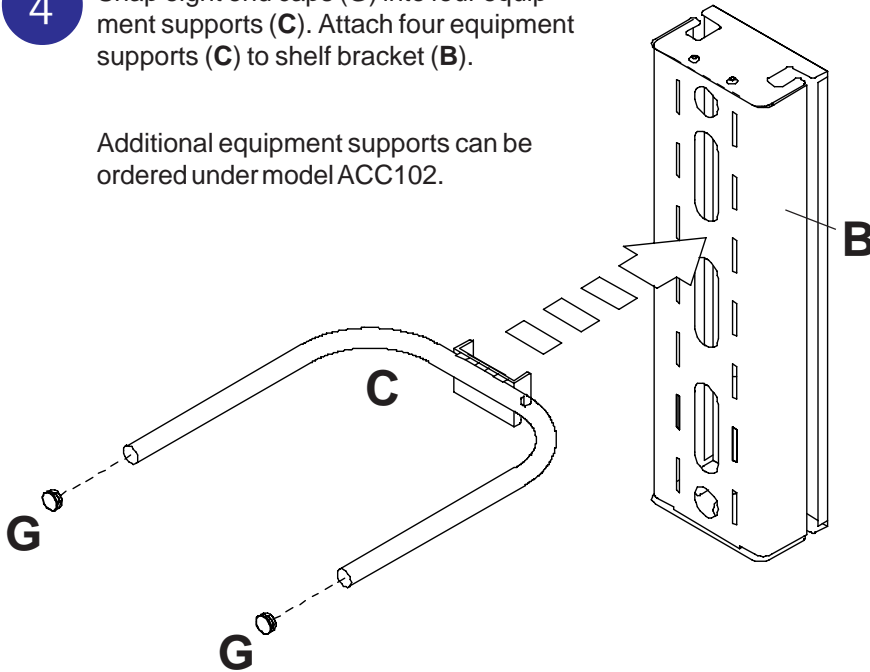
Attach shelf bracket (B) to wall bracket (A) with four screws (E) using allen wrench.



4

Snap eight end caps (G) into four equipment supports (C). Attach four equipment supports (C) to shelf bracket (B).

Additional equipment supports can be ordered under model ACC102.



- 5** Attach eight strips of adhesive foam (F) to tops of equipment supports (C).

