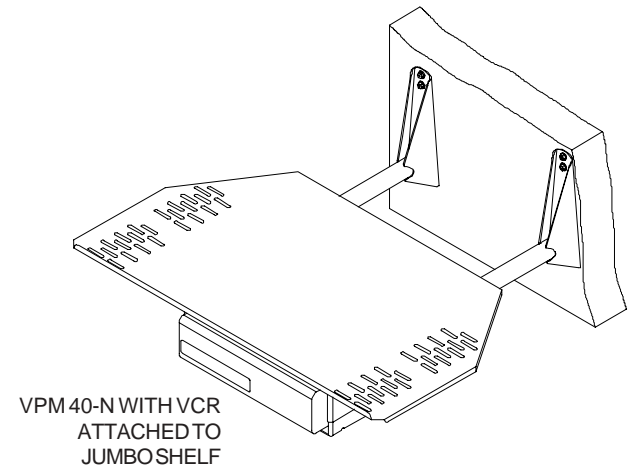
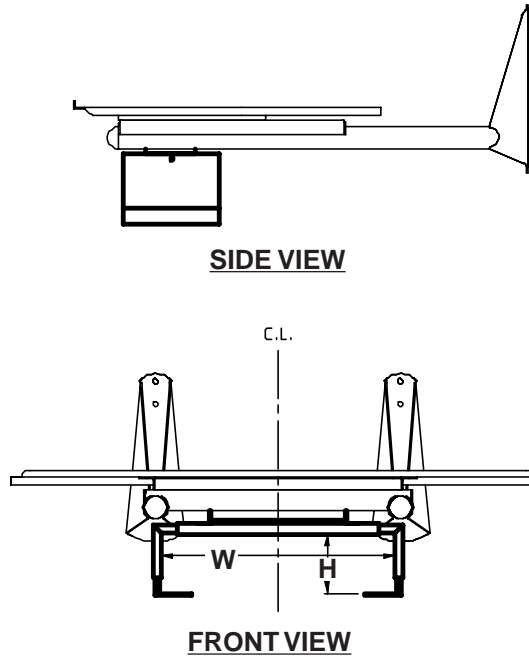


MODEL #	WEIGHT	SHIPPING WEIGHT	MAX. LOAD CAPACITY
VPM 25-N, VPM 25-NS	4.8 lb (2.2 kg)	5.3 lb (2.4 kg)	50 lb (23 kg)
SVPM 25-N, SVPM 25-NS	4.9 lb (2.2 kg)	5.3 lb (2.4 kg)	50 lb (23 kg)
VPM 40-N, VPM 40-N-SLV	5.4 lb (2.5 kg)	6.0 lb (2.8 kg)	50 lb (23 kg)
SVPM 40-N, SVPM 40-N-SLV	5.5 lb (2.5 kg)	6.1 lb (2.8 kg)	50 lb (23 kg)



MODEL #	INSIDE DIMENSIONS		VCR/DVD/DVR DIMENSIONS	
	WIDTH (W)	HEIGHT (H)	MAXIMUM	MINIMUM
VPM 25-N, VPM 25-NS	13.25" - 17.25" (337 mm - 438 mm)	1.5" - 2.75" (38 mm - 70 mm)	17.25" x 2.5" (438 mm x 64 mm)	13.25" x 1.75" (337 mm x 44 mm)
SVPM 25-N, SVPM 25-NS	13.25" - 17.25" (337 mm - 438 mm)	1.5" - 2.75" (38 mm - 70 mm)	17.25" x 2.5" (438 mm x 64 mm)	13.25" x 1.75" (337 mm x 44 mm)
VPM 40-N, VPM 40-N-SLV	13.25" - 17.25" (337 mm - 438 mm)	2.69" - 4.5" (68 mm - 114 mm)	17.25" x 4.25" (438 mm x 108 mm)	13.25" x 3" (337 mm x 76 mm)
SVPM 40-N, SVPM 40-N-SLV	13.25" - 17.25" (337 mm - 438 mm)	2.69" - 4.5" (68 mm - 114 mm)	17.25" x 4.25" (438 mm x 108 mm)	13.25" x 3" (337 mm x 76 mm)

The VCR/DVD/DVR Mount for Jumbo® Shelf is available in two versions. Models **SVPM 25-N, SVPM 25-NS, SVPM 40-N, and SVPM 40-N-SLV** feature penta-pin™ screws for security. Models **VPM 25-N, VPM 25-NS, VPM 40-N, and VPM 40-N-SLV** feature phillips screws. Both models are for DVD players, DVRs, and standard size front-loading VCRs only.

Features

- All-steel construction
- "Surround and clamp" design
- Scratch resistant black or silver fused epoxy finish
- Two sizes available
- Includes mounting hardware for attachment to Jumbo Shelf

Architects Specifications:

The VCR/DVD/DVR Mount shall be a Peerless model _____ and shall be designed to surround and clamp the VCR/DVD/DVR. It shall be attached to a Peerless Jumbo Shelf. All mounting hardware shall be included. The VCR/DVD/DVR Mount shall be constructed of heavy gauge cold rolled steel and finished in scratch resistant black or silver fused epoxy. Assembly and installation shall be done according to instructions provided by the manufacturer.

**TECHNICAL DATA SHEET
VCR/DVD/DVR MOUNT FOR JUMBO® SHELF**

Peerless Industries, Inc.

3215 W. North Ave. phone: (708) 865-8870
 Melrose Park, IL 60160 fax: (708) 865-2941
 www.peerlessindustries.com

ISSUED: 7-25-98 SHEET NO: 081-9517-4 07-29-04