

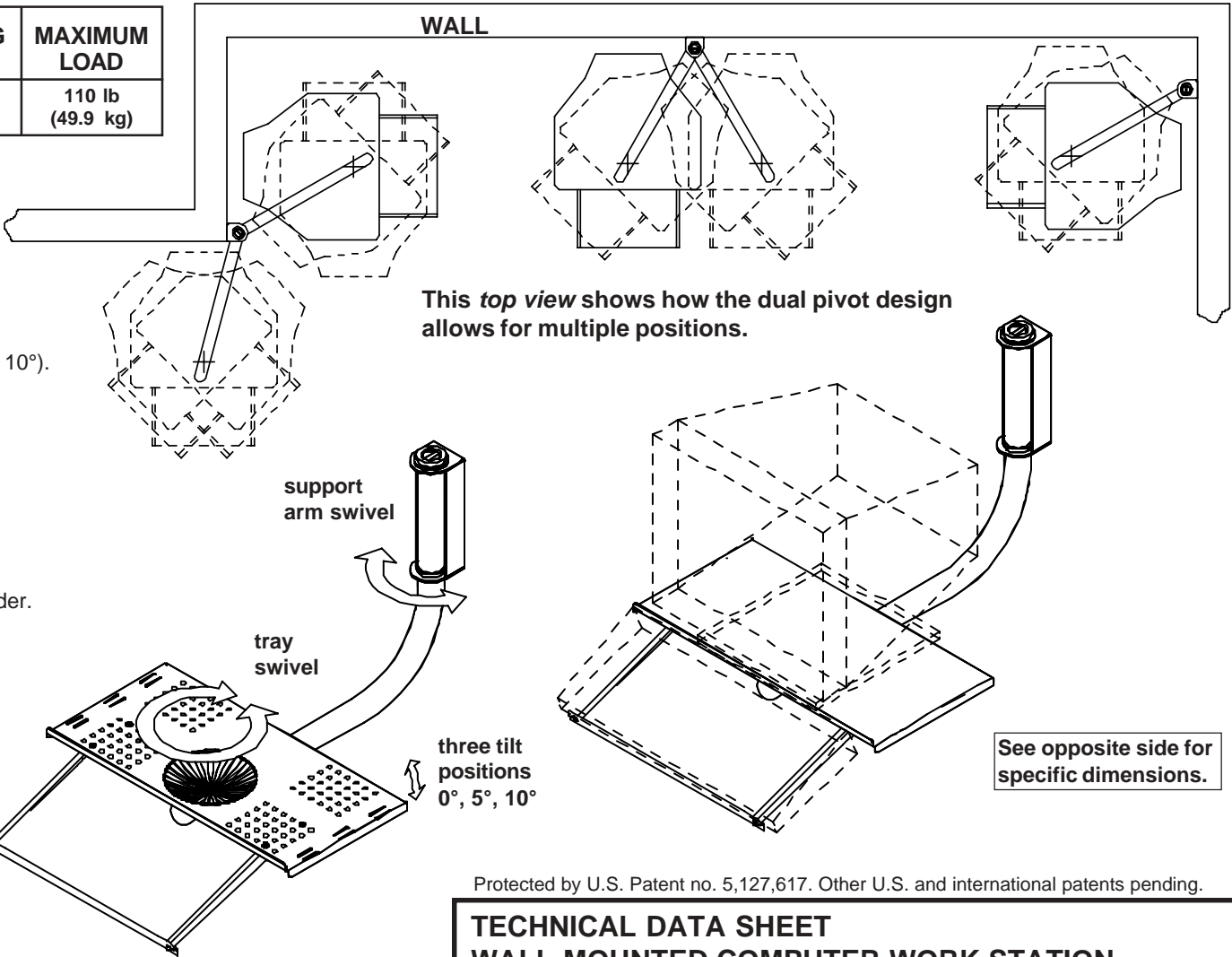
MODEL#	WEIGHT	SHIPPING WEIGHT	MAXIMUM LOAD
PC 25/PC 25G	9 lb (4.1 kg)	11.6 lb (5.3 kg)	110 lb (49.9 kg)

Shipping weight based on single unit shipment. Per unit shipping weight may be less for bulk orders.

**WALL MOUNTED COMPUTER WORK STATION FEATURES**

- Support Tray has three tilt positions (0°, 5°, 10°).
- Safety belt included.
- Dual swivel feature allows monitor to be pointed in almost any direction.
- Attachment hardware for wood stud walls provided. For attachment to concrete walls order accessory kit #ACC 203.
- Hardware for concrete wall attachment may be included with product by special order.
- For metal stud wall installations order External Wall Plate for Metal Stud Walls - several models available.

For weights and specifications see page 2.



This top view shows how the dual pivot design allows for multiple positions.

See opposite side for specific dimensions.

Protected by U.S. Patent no. 5,127,617. Other U.S. and international patents pending.

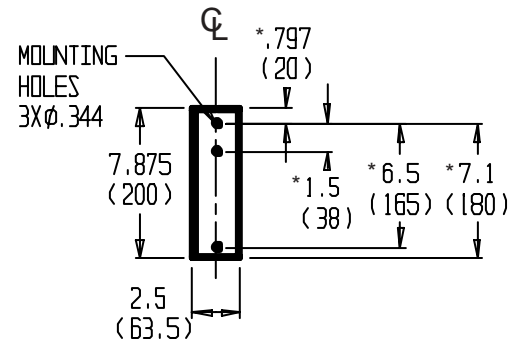
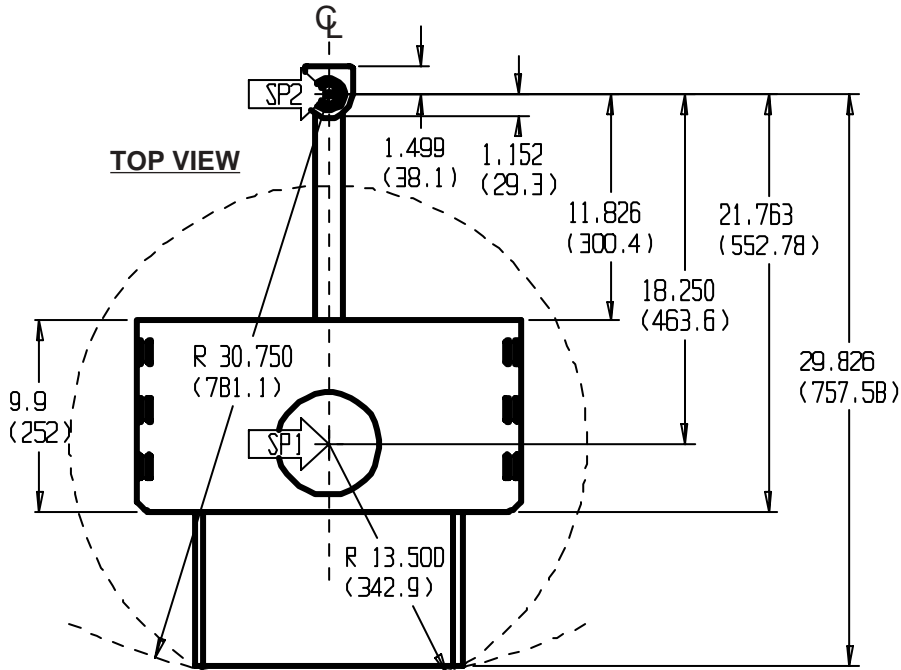
**TECHNICAL DATA SHEET  
WALL MOUNTED COMPUTER WORK STATION**

**Peerless Industries, Inc.**  
 3215 W. North Ave. phone: (708)865-8870  
 Melrose Park, IL 60160 fax: (708)865-2941  
 www.peerlessindustries.com

ISSUED: 2-04-99 SHEET NO:095-9503-2 8-15-03

**Architects Specifications:**

The Computer Work Station shall be a Peerless model **PC 25** or **PC 25G** and shall be located where indicated on the plans. The finish shall be scratch resistant Black or Light Gray Fused Epoxy. The point of attachment must be to a wood stud, solid concrete, brick, or concrete block wall. The Computer Work Station shall be constructed primarily of heavy gauge cold rolled steel and steel tubing. It shall feature three tilt positions and dual swivel. Assembly and installation shall be done according to instructions provided by the manufacturer.



**NOTES**

Dimensions shown at 0° tray tilt

All dimensions: inch (mm) unless otherwise specified.

CL=centerline

SP= swivel point

\* distance from top mounting hole in wall plate

