

Installation and Assembly - Wall Mounted Computer Work Station

Models: PC 25, PC 25G

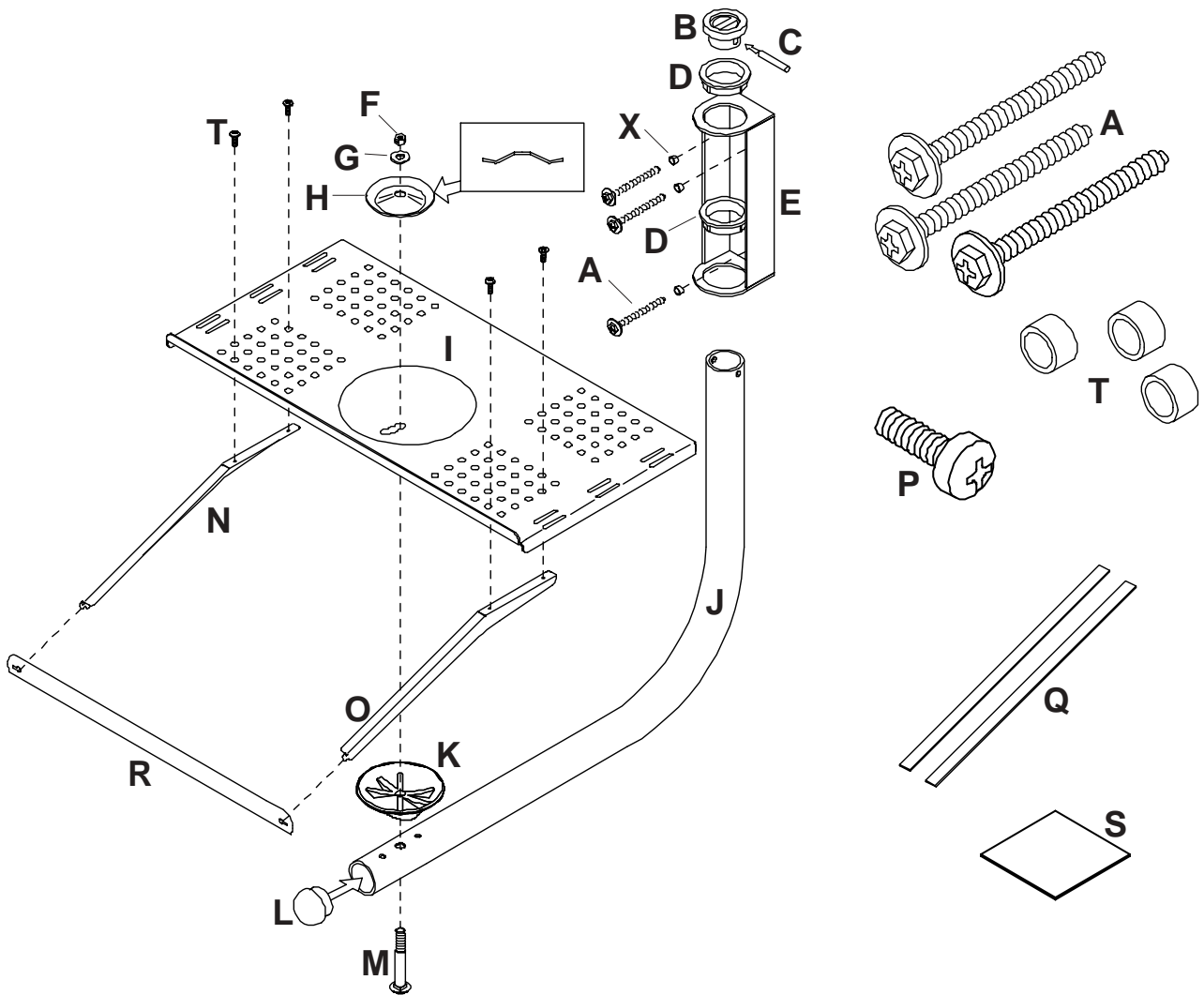
IMPORTANT! Read entire instruction sheet before beginning installation and assembly.

WARNING! Installer must verify that the wall will safely support the combined weight of all attached equipment and hardware.

IMPORTANT! Certain types of walls require additional mounting hardware...

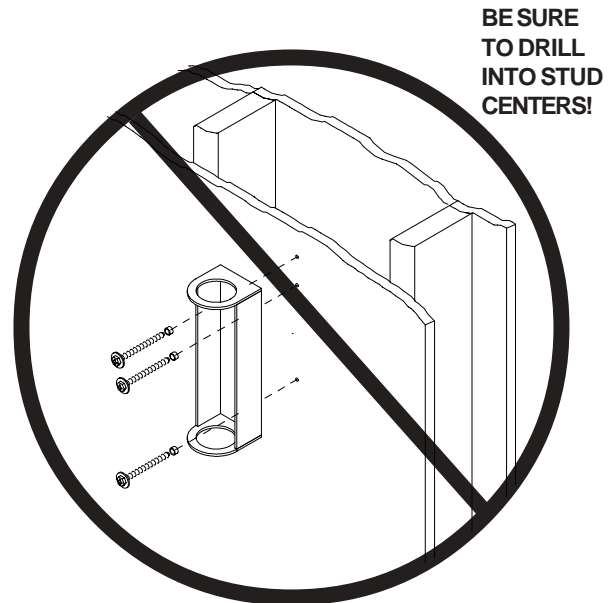
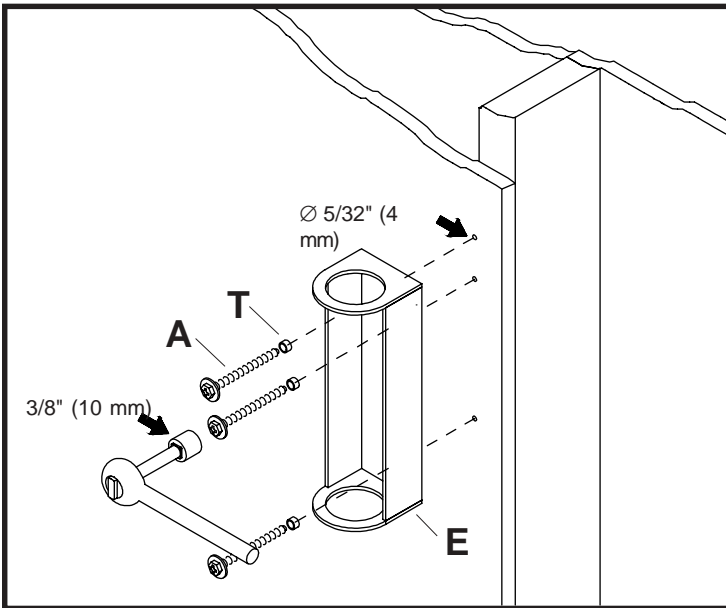
WALL CONSTRUCTION	ADDITIONAL HARDWARE REQUIRED
Wood Stud, Wood Beam	none
Metal Stud	External Wall Plate for Metal Stud Walls - <i>several models available. Call Peerless customer service.</i>
Solid Concrete, Concrete Block, Brick	Concrete Anchor Kit - <i>order accessory kit ACC 203.</i> Note: Some units may already include concrete anchors.
Other or unsure?	Consult a qualified professional installer or call Peerless Customer Service.

Peerless Industries, Inc.
1980 Hawthorne Avenue
Melrose Park, IL 60160



Parts List

Description	Qty.	PC 25G (gray) Part Number	PC 25 (black) Part Number
A Washer Head Screw #14 x 2.5 (6 mm x 65 mm)	3	5S1-015-C04	5S1-015-C03
B Support Arm Retainer	1	590-1052	590-1051
C Retainer Pin	1	560-9643	560-9643
D Bushing	2	9PT-66SW02P	590-1005
E Wall Bracket	1	170-7001	170-1001
F Lock Nut	1	530-9404	530-9402
G Brass Washer	1	540-9441	540-9441
H Spring Plate	1	580-0003	580-0003
I Support Tray	1	170-7007	170-1007
J Support Arm	1	170-7022	170-1022
K Swivel Cup	1	590-1020	590-1019
L End Cap	1	590-1001	590-1014
M Carriage Bolt	1	520-2158	520-1158
N Right Keyboard Support Arm	1	095-7032	095-1032
O Left Keyboard Support Arm	1	095-7031	095-1031
P M5 x .8 x 10 mm screw	4	520-2005	520-9250
Q Adhesive foam pads 12.75 x .375 x .125	2	570-0015	599-3802
R Keyboard Front Plate	1	095-7030	095-1030
S Adhesive foam pads 3 x 3	4	570-0026	570-0025
T Plastic Bushing	3	590-1018	590-1018



- 1** **For Wood Stud Walls** (for concrete skip to step 2) drill three $\frac{5}{32}$ " (4 mm) dia. holes $2\frac{1}{2}$ " (65 mm) deep. Attach wall plate (E) using #14 x 2.5 (6 mm x 65 mm) wood screws (A) and plastic bushings (T). *Tighten to 80 in • lb (9 N.M.) maximum torque.*
CAUTION: Tighten wood screws so wall plate is firmly attached. But DO NOT TIGHTEN WITH EXCESSIVE FORCE! Over-tightening can cause stress damage to wood screws, greatly reducing their holding power!

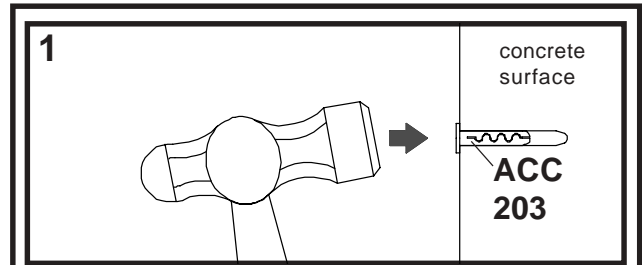
WARNING: When installing Peerless wall mounts on concrete block, verify that you have a minimum of 1³/₈" of actual concrete surface in the 1/4" diameter hole to be used for the concrete anchors. Do not drill into mortar joints! Be sure to mount in a solid part of the block, generally 1" minimum from the side of the block. Concrete block must meet ASTM C-90 specifications. It is suggested that a standard electric drill on slow setting is used to drill the hole instead of a hammer drill to avoid breaking out the back of the hole when entering a void or cavity.

IMPORTANT! Concrete must be 2000 psi density minimum.

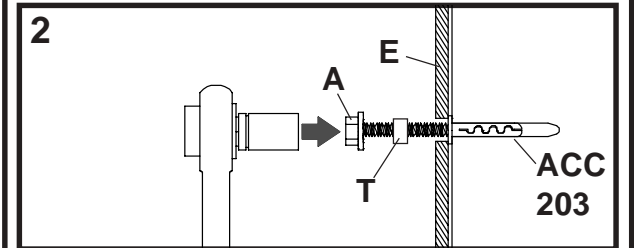
2 For attachment to a brick, solid concrete or concrete block wall use wall plate (E), making sure that it is level, as a template to mark holes. Drill 1/4" (6 mm) dia. holes to a minimum depth of 2.5" (64 mm). Insert anchors in holes flush with wall as shown (right). Place wall plate (E) over anchors and secure with three #14 x 2.5" (6 mm x 65 mm) wood screws (A) and three spacers (T). Tighten all fasteners.

CAUTION: Tighten wood screws so wall plate is firmly attached. **DO NOT TIGHTEN WITH EXCESSIVE FORCE!** Overtightening can cause stress damage to wood screws, greatly reducing their holding power! Tighten to 80 in • lb (9 N.M.) maximum torque.

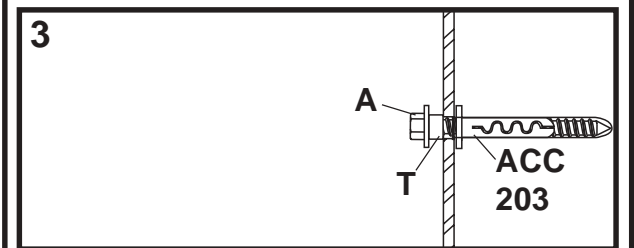
FOR DIRECT ATTACHMENT TO LOAD BEARING CONCRETE ONLY! Concrete anchors are **not** intended for attachment to concrete surfaces covered with a layer of plaster, drywall, or other finishing material. If mounting to concrete surfaces covered with plaster / drywall is unavoidable, plaster / drywall (up to 5/8" thick) must be counterbored as shown below. If plaster / drywall is thicker than 5/8", custom fasteners must be supplied by installer.



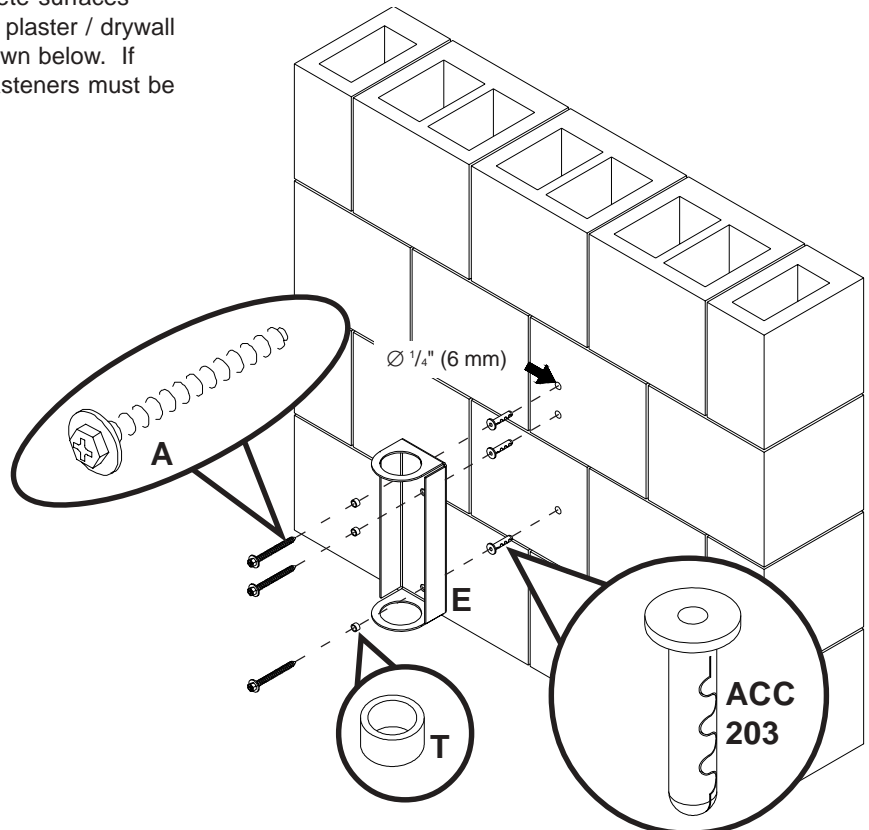
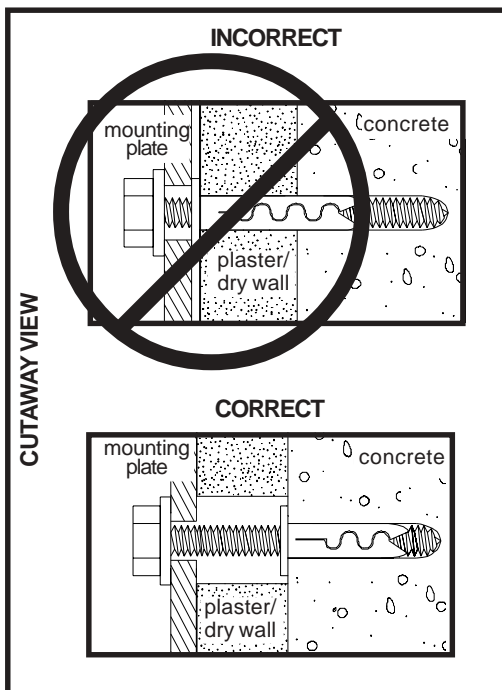
Drill hole(s) and insert anchor(s)

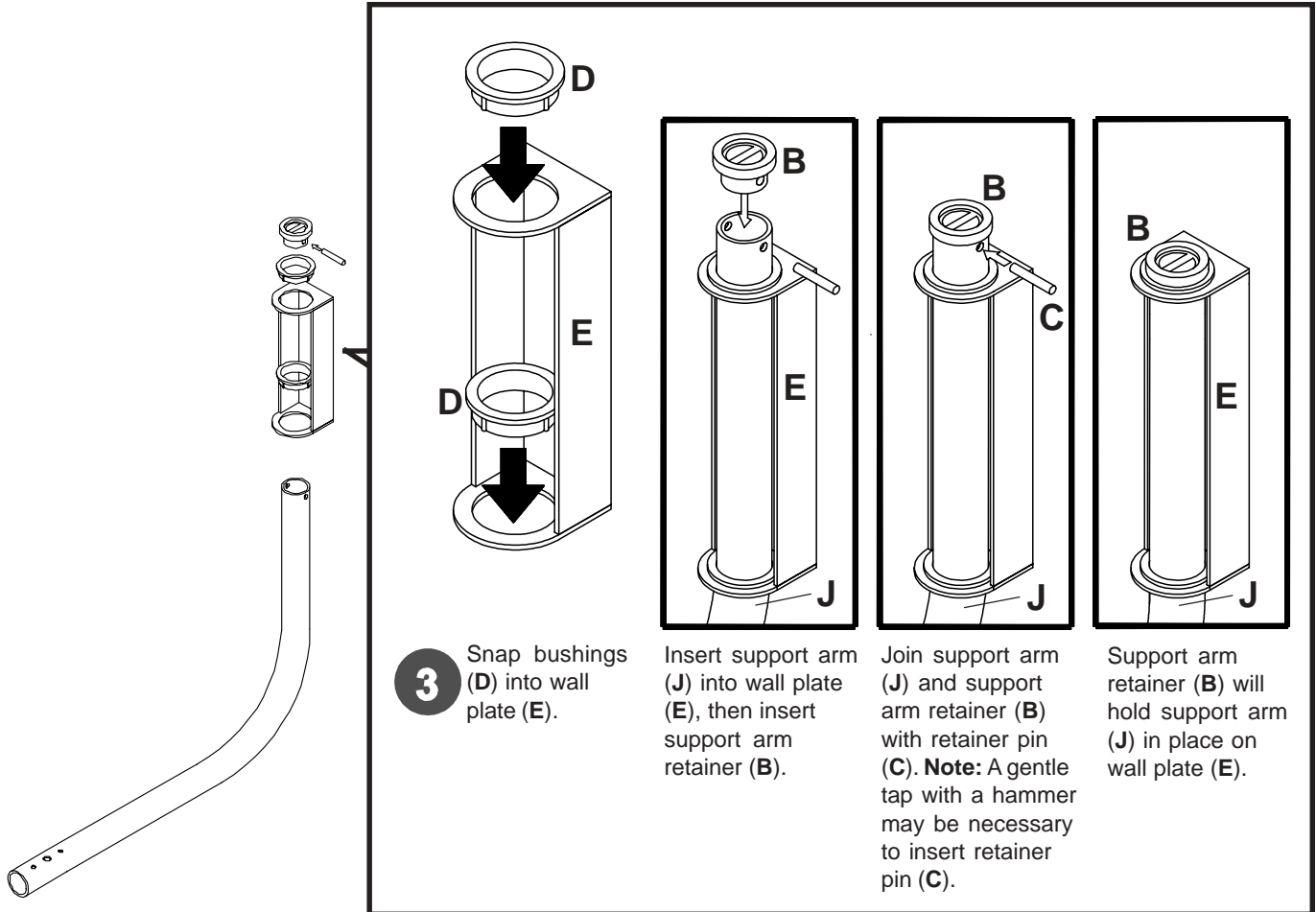


Place plate (E) over anchors and secure with screws (A) and spacers (T)



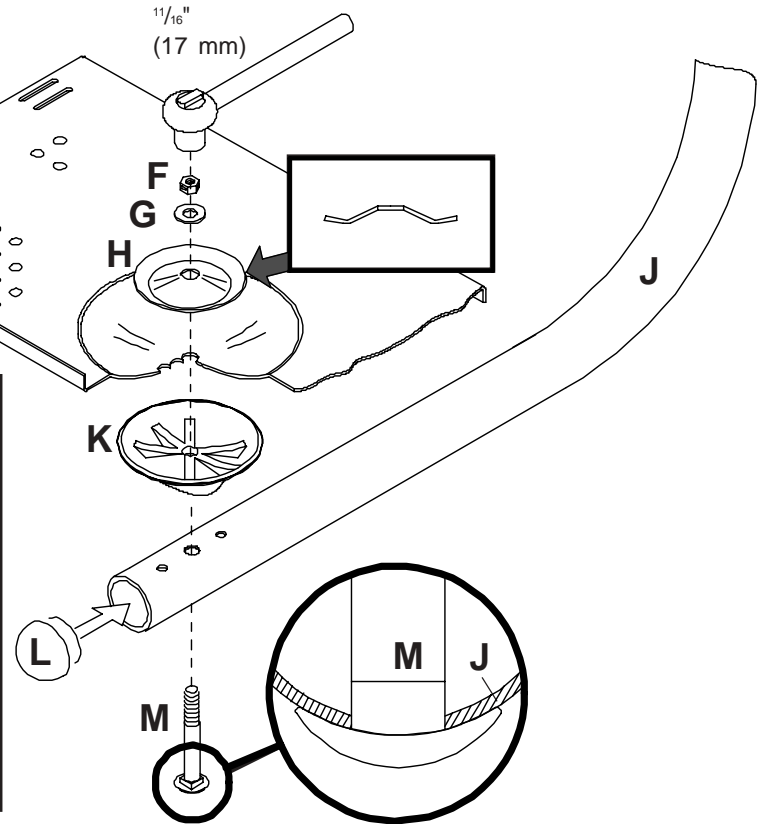
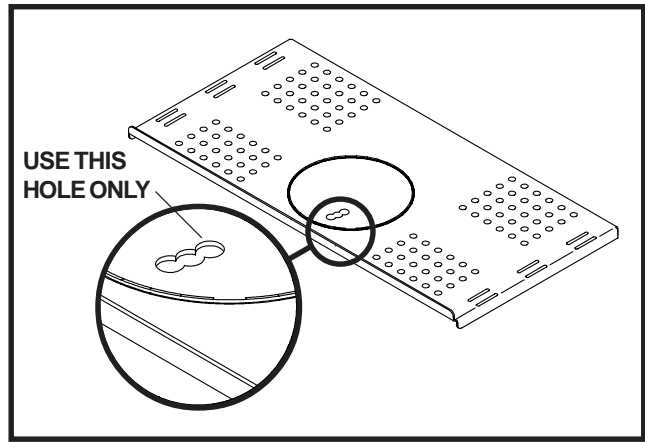
Tighten all fasteners



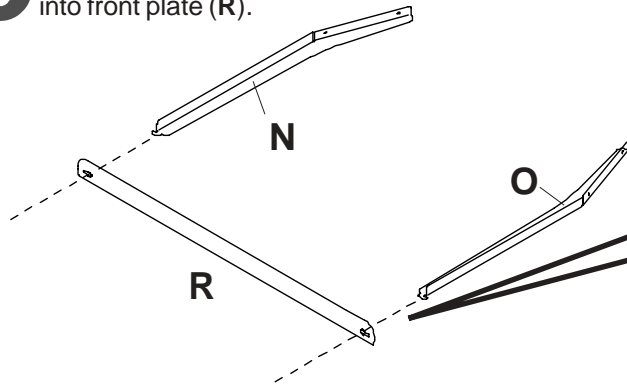


4 Complete the wall mount assembly as shown.

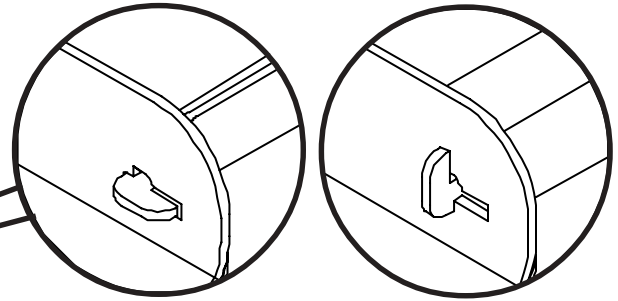
NOTE: USE HOLE (DEEPEST OF THREE) THAT SECURES TRAY (I) PARALLEL (LEVEL) TO SUPPORT ARM (J).



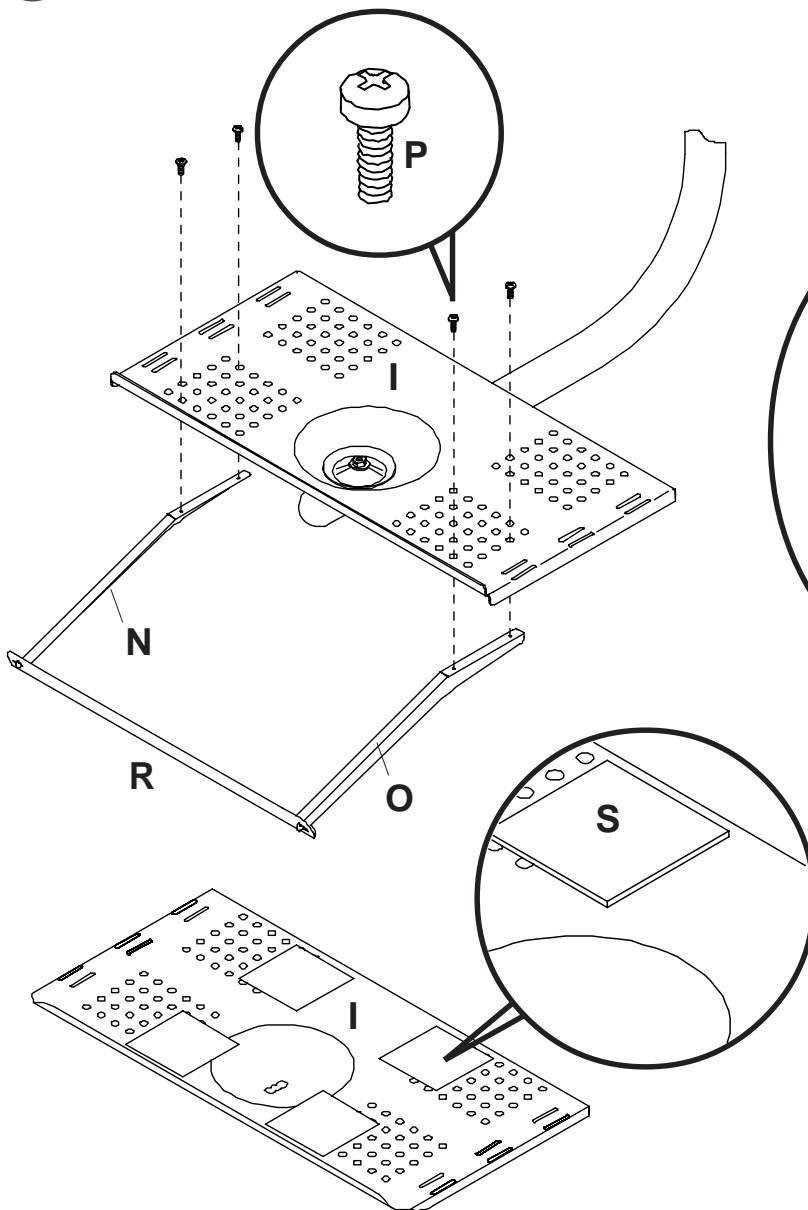
5 Insert keyboard support arms (N,O) into front plate (R).



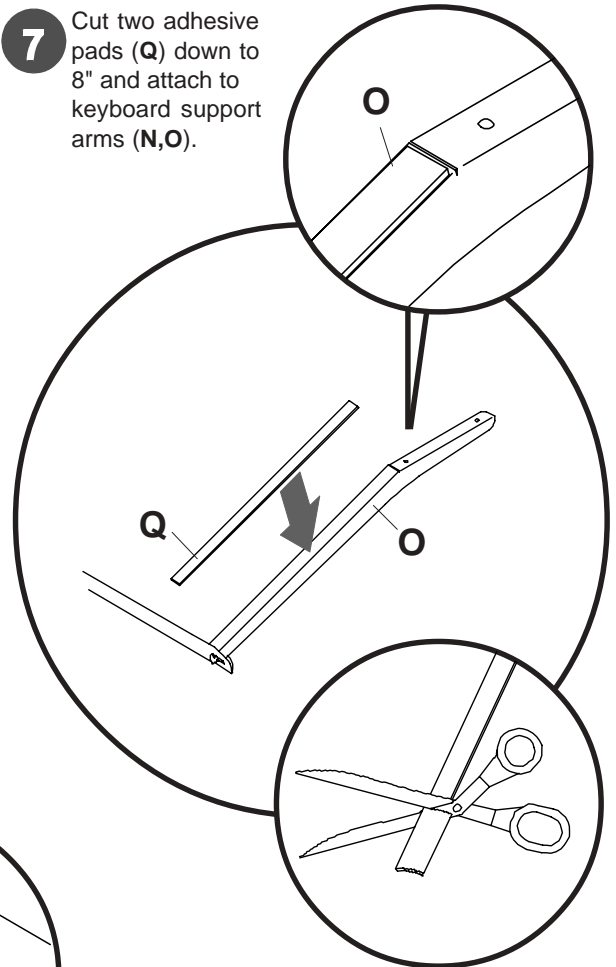
Rotate support arms 90° on each side securing front plate (R) into position.



6 Attach keyboard holder to support tray (I) using four M5 screws (P) as shown.



7 Cut two adhesive pads (Q) down to 8" and attach to keyboard support arms (N,O).



8 Attach four adhesive pads (S) to the top of the support tray (I). Position the pads to the size of the base pedestal on your monitor.