

Installation and Assembly - TV Wall Mount



This product is intended for use with UL Listed products and must be installed by a qualified professional installer.

Models: DS 13, DS 13-SV, DS 13W
 DS 20, DS 20-SV, DS 20W
 DS 27, DS 27-SV, DS 27W

IMPORTANT! Read entire instruction sheet before beginning installation and assembly.

DS 13, DS 13-SV, DS 13W	Product is UL rated up to 13" TV, 125 lb
DS 20, DS 20-SV, DS 20W	Product is UL rated up to 20" TV, 125 lb
DS 27, DS 27-SV, DS 27W	Product is UL rated up to 27" TV, 125 lb

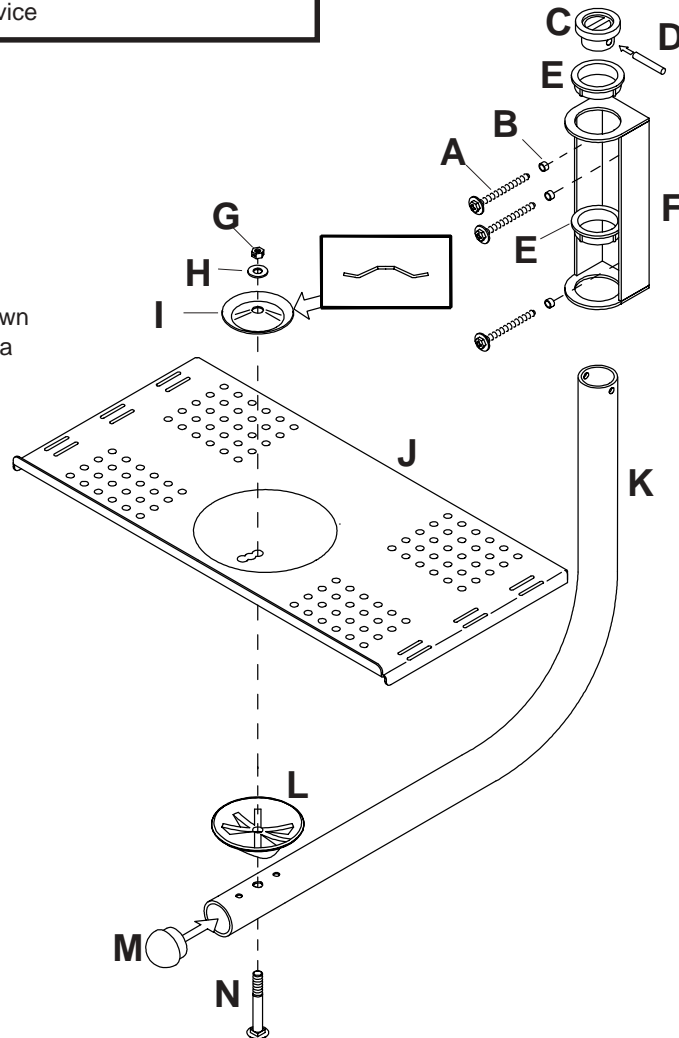
⚠ WARNING

- Installer must verify that the wall will safely support the combined weight of all attached equipment and hardware.

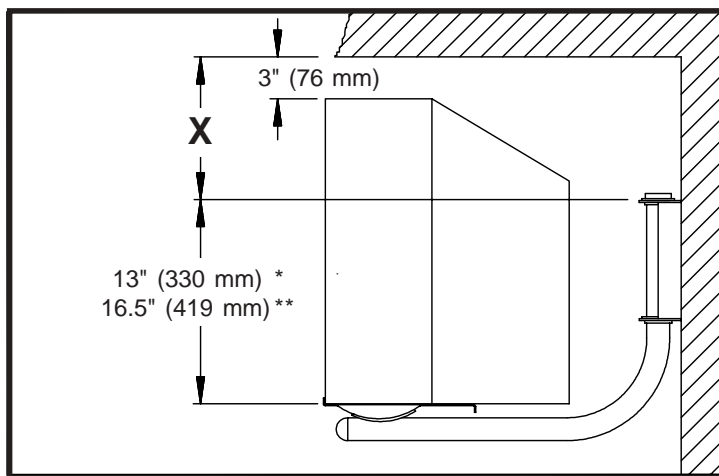
IMPORTANT! Certain types of walls require additional mounting hardware...

WALL CONSTRUCTION	ADDITIONAL HARDWARE REQUIRED
Wood Stud, Wood Beam	none
Solid Concrete, Cinder Block, Brick	Concrete Anchor Kit - <i>order accessory kit ACC 203.</i>
Other or unsure?	Contact Customer Service

1 Before you start make sure all of the parts shown are included with your product. See page 5 for a complete parts list.

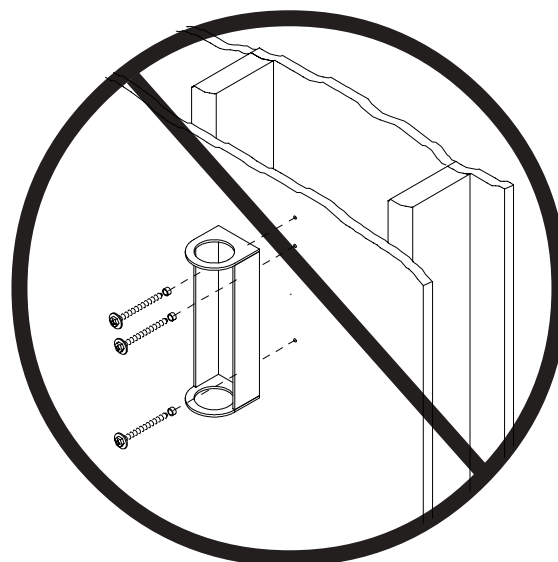
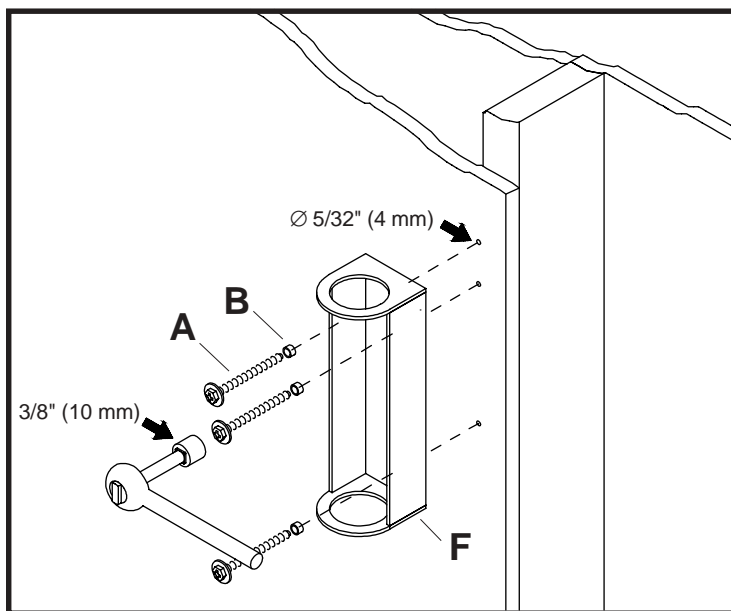


2 PLAN AHEAD! If you wish to mount TV as close to ceiling as possible measure TV height and use dimensions provided to calculate dimension **X**.



*DS 13, DS 13-SV, DS 13W, DS 20, DS 20-SV, DS 20W

**DS 27, DS, 27-SV, DS 27W



3 For Wood Stud Walls (for concrete skip to step 4) drill three 5/32" (4 mm) dia. holes 2 1/2" (65 mm) deep. Attach wall bracket (F) using #14 x 2.5 (6 mm x 65 mm) wood screws (A) and plastic bushings (B).

⚠ WARNING

- Tighten wood screws so that wall plate is firmly attached, but do not overtighten. Overtightening can damage the screws, greatly reducing their holding power.
- Never tighten in excess of 80 in. lb. (9 N.M.).
- Make sure that mounting screws are anchored into the center of the studs. The use of an "edge to edge" stud finder is highly recommended.

⚠ WARNING

- When installing Peerless wall mounts on cinder block, verify that you have a minimum of 1 5/8" of actual concrete surface in the 1/4" diameter hole to be used for the concrete anchors. Do not drill into mortar joints! Be sure to mount in a solid part of the block, generally 1" minimum from the side of the block. Cinder block must meet ASTM C-90 specifications. It is suggested that a standard electric drill on slow setting is used to drill the hole instead of a hammer drill to avoid breaking out the back of the hole when entering a void or cavity.
- Concrete must be 2000 psi density minimum. Lighter density concrete may not hold concrete anchor.

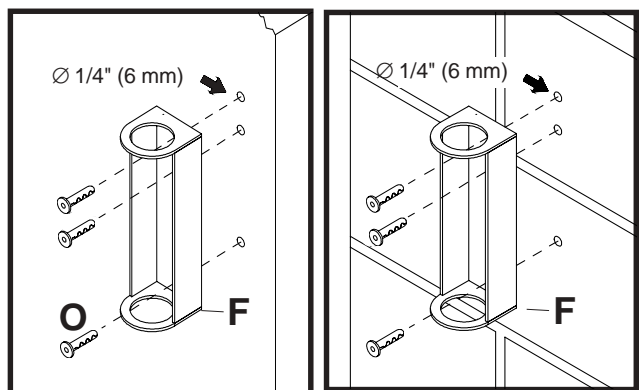
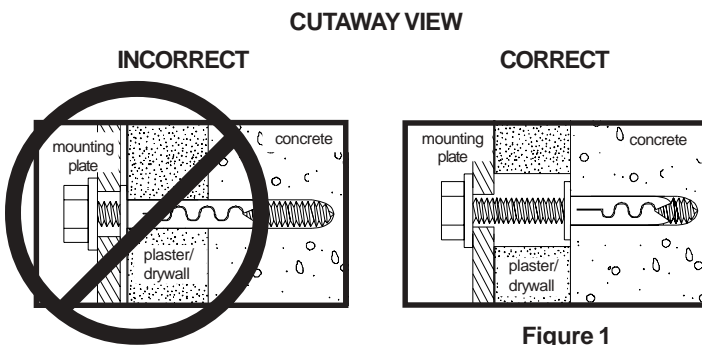
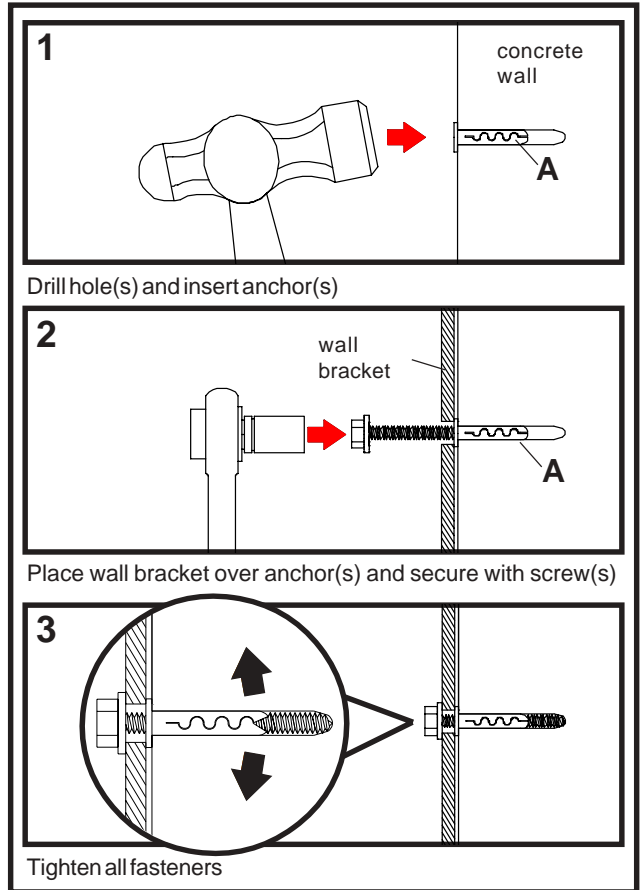
- 4** For Concrete Walls use wall bracket, making sure that it is level, as a template to mark holes. Drill 1/4" (6 mm) dia. holes to a minimum depth of 2.5" (64 mm). Insert anchors in holes flush with wall as shown (right). Place wall bracket over anchors and secure with #14 x 2.5" (6 mm x 65 mm) wood screws. Tighten all fasteners.

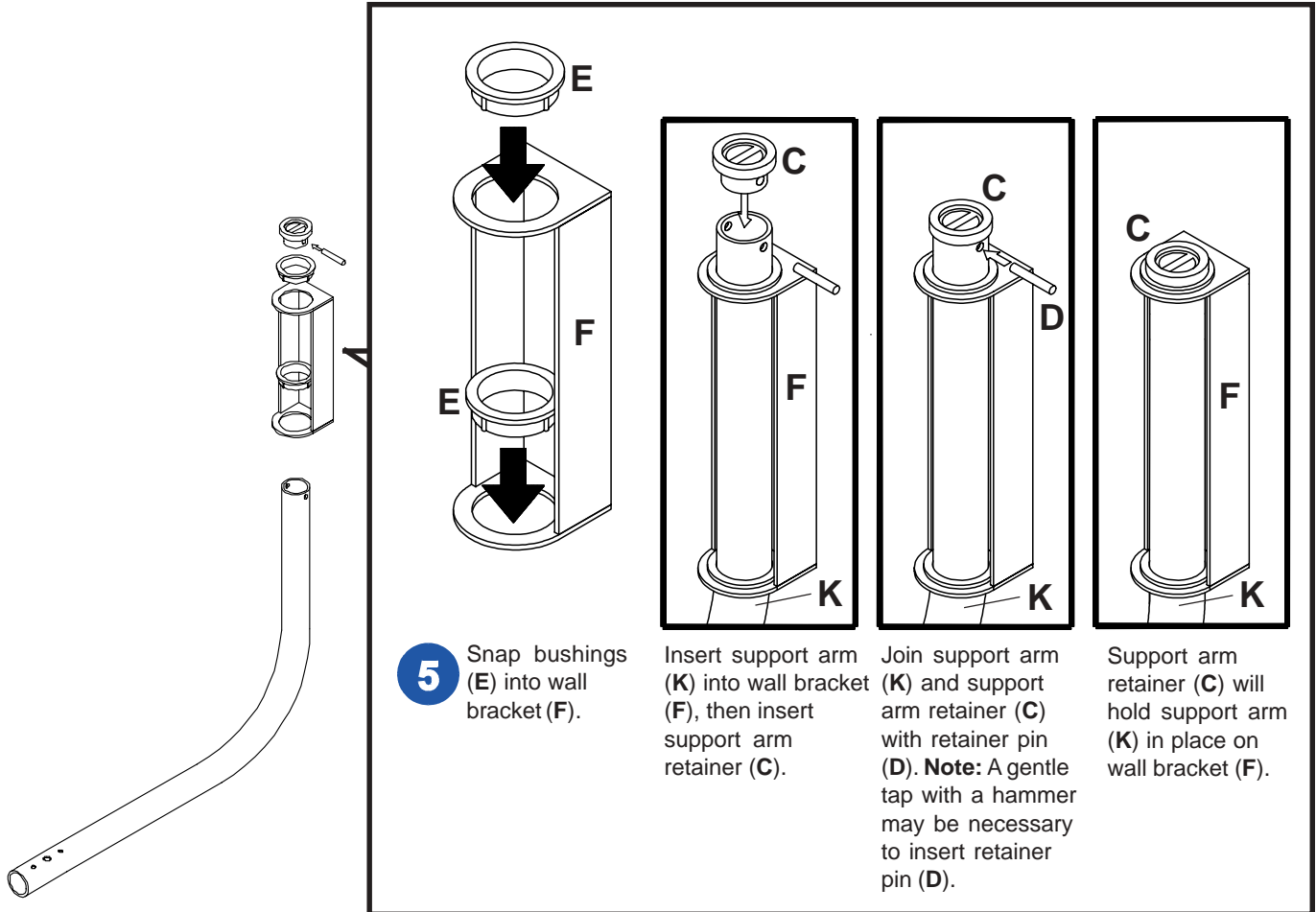
⚠ WARNING

- Tighten wood screws so that wall plate is firmly attached, but do not overtighten. Overtightening can damage the screws, greatly reducing their holding power.
- Never tighten in excess of 80 in • lb (9 N.M.).

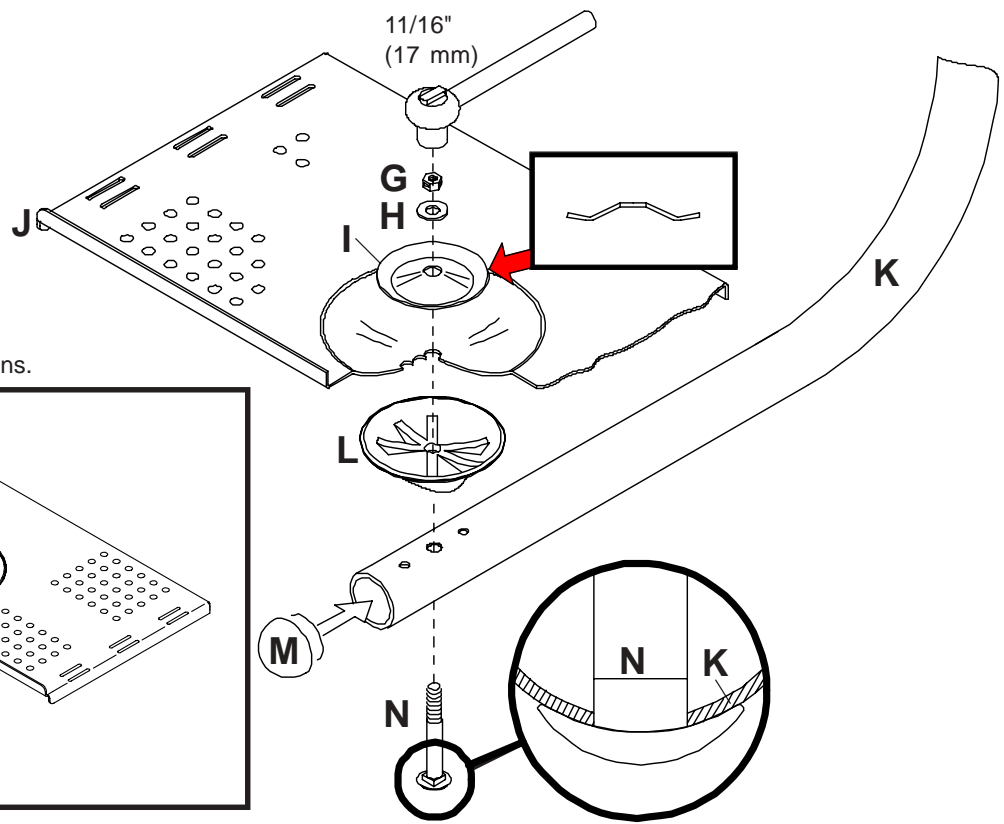
⚠ WARNING

- Always attach concrete expansion anchors directly to load-bearing concrete.
- Never attach concrete expansion anchors to concrete covered with plaster, drywall, or other finishing material. If mounting to concrete surface with a finishing surface is unavoidable, the finishing surface must be counterbored as shown in Figure 1.

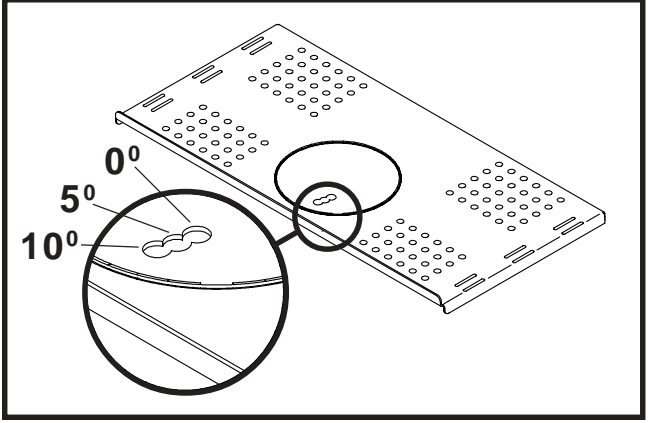




6 Complete the wall mount assembly as shown. **Note:** If installing a VCR mount refer to that instruction before completing this step.



Choose from one of three tilt positions.



DS13	DS 13-SV	DS13W	DS20	DS 20-SV	DS20W	DS27	DS 27-SV	DS27W	Parts List		
									Description	Qty.	Part Number
x			x			x			A Washer Head Screw (black) #14 x 2.5 (6mm x 65mm)	3	5S1-015-C03
	x	x		x	x		x	x	Washer Head Screw (cadmium) #14 x 2.5 (6mm x 65mm)	3	5S1-015-C04
x	x	x	x	x	x	x	x	x	B Plastic Ring	3	590-1018
x			x			x			C Support Arm Retainer (black)	1	590-1051
	x			x			x		Support Arm Retainer (silver)	1	590-4051
		x			x			x	Support Arm Retainer (white)	1	590-1052
x	x	x	x	x	x	x	x	x	D Retainer Pin	1	560-9643
x			x			x			E Bushing (black)	2	590-1005
	x			x			x		Bushing (silver)	2	590-4005
		x			x			x	Bushing (white)	2	9PT-66SW02P
x			x						F Wall Bracket (black)	1	170-1001
	x			x					Wall Bracket (silver)	1	170-4001
		x			x				Wall Bracket (white)	1	170-2001
						x			Wall Bracket (black)	1	170-1039
							x		Wall Bracket (silver)	1	170-4039
								x	Wall Bracket (white)	1	170-2039
x			x			x			G Lock Nut (black)	1	530-9402
	x	x		x	x		x	x	Lock Nut (white)	1	530-9404
x	x	x	x	x	x	x	x	x	H Brass Washer	1	540-9441
x	x	x	x	x	x	x	x	x	I Spring Plate	1	580-0003
x									J Support Tray (black)	1	170-1006
	x								Support Tray (silver)	1	170-4006
		x							Support Tray (white)	1	170-2006
			x						Support Tray (black)	1	170-1007
				x					Support Tray (silver)	1	170-4007
					x				Support Tray (white)	1	170-2007
						x			Support Tray (black)	1	170-1009
							x		Support Tray (silver)	1	170-4009
								x	Support Tray (white)	1	170-2009
x									K Support Arm (black)	1	170-1021
	x								Support Arm (silver)	1	170-4021
		x							Support Arm (white)	1	170-2021
			x						Support Arm (black)	1	170-1022
				x					Support Arm (silver)	1	170-4022
					x				Support Arm (white)	1	170-2022
						x			Support Arm (black)	1	170-1023
							x		Support Arm (silver)	1	170-4023
								x	Support Arm (white)	1	170-2023
x			x			x			L Swivel Cup (black)	1	590-1019
	x			x			x		Swivel Cup (silver)	1	590-4019
		x			x			x	Swivel Cup (white)	1	590-1020
x			x			x			M End Cap (black)	1	590-1014
	x			x			x		End Cap (silver)	1	590-4014
		x			x			x	End Cap (white)	1	590-1001
x			x			x			N Carriage Bolt (black)	1	520-1158
	x	x		x	x		x	x	Carriage Bolt (cadmium)	1	520-2158