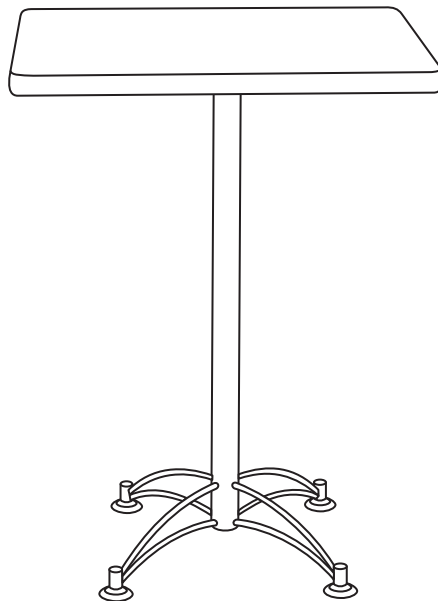
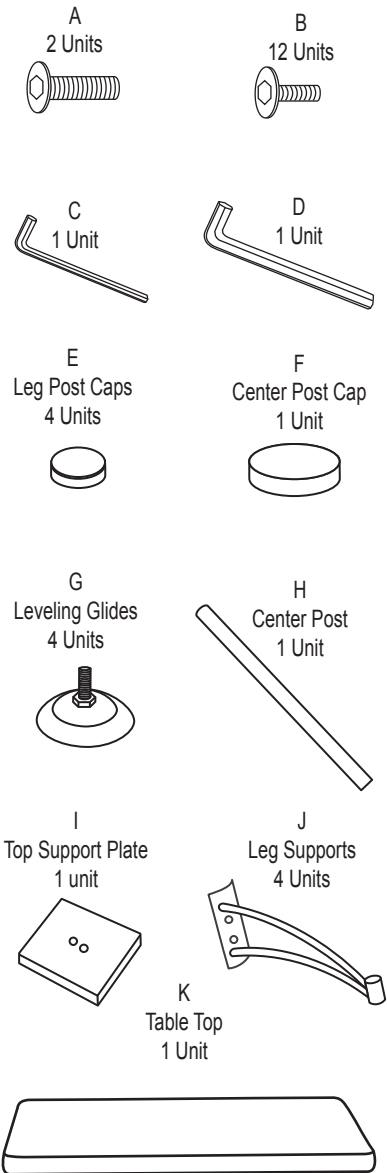


Model CLT24SQ / CLT30SQ Café Table

Parts Listing



Assembly Instructions

Please read all instructions before assembly.

Step 1a: Attach Leg Supports (J) to Center Post (H) with Screws (B), using small Allen Wrench (C).

Step 1b: Attach Center Post Cap (F) to bottom of Center Post (H).

Step 1c: Attach Leg Post Cap (E) and Leveling Glides (G) to Leg Supports (J).

Step 2: Attach Table Top Support Plate (I) to Center Post (H) with long Screws (A), using long Allen Wrench (D).

Step 3: Attach Table Top Support Plate to bottom of Table Top (K) with short Screws (B), using short Allen Wrench (C).

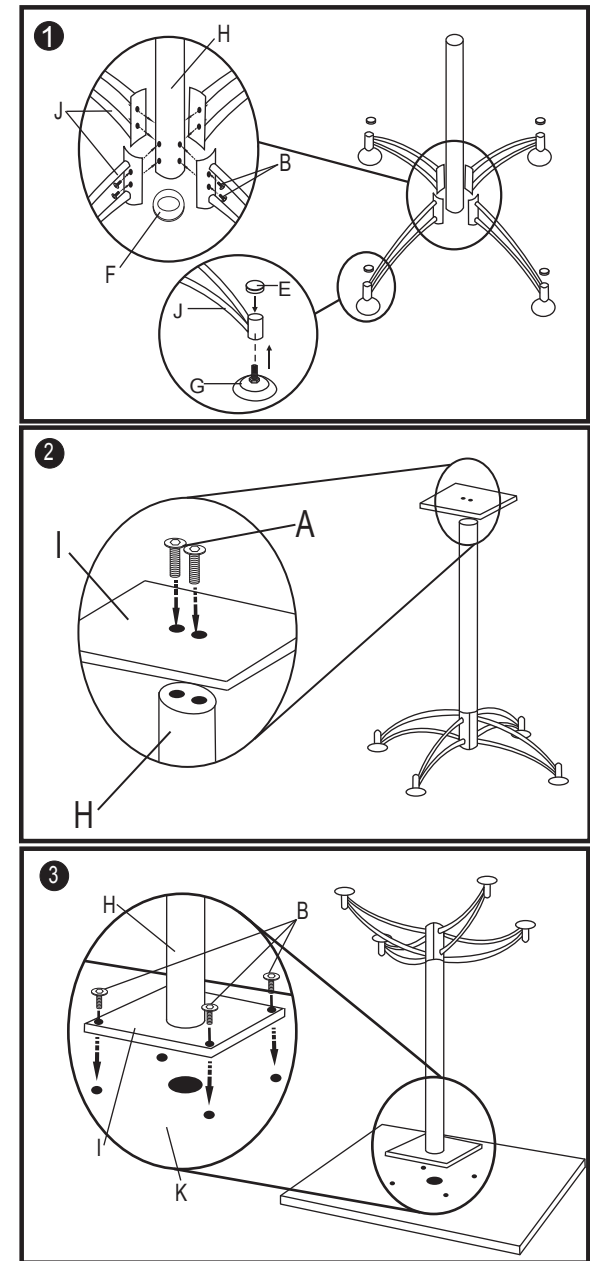
WEIGHT CAPACITY: 250 lbs.

Assembly Notes:

During assembly, hand tighten screw only when all screws are in place, you may then tighten all screws completely.

CAUTION:

1. Do not use this table as a step ladder.
2. Check for loose screws and tighten them every 6 months.



161 Tradition Trail Holly Springs, NC, 27540
 800-520-7471 (voice) 919-362-4765 (fax)
 919-303-6389 (voice) www.ofminc.com
 support@ofminc.com