

PROFESSIONAL COOLER/SINK/STERNO UNITS



Product shown: OCI-15BS



Product shown: OCI-15BC



Product shown: OCI-15ST



Product shown: OCI-DC2



Product shown: OCI-DS



Product shown: OCI-EDC

OCI ACCESSORY ITEMS ARE THE MOST VERSATILE UNITS IN THE INDUSTRY. DESIGNED TO LAST A LIFETIME. EVERY OCI ACCESSORY IS DESIGNED TO MAKE YOUR OUTDOOR KITCHEN MORE USEABLE, ORGANIZED AND APPEALING. ALL OCI ITEMS ARE MADE FROM HEAVY GAUGE STAINLESS STEEL MADE RIGHT HERE IN THE USA.

Product Features

- Non-rusting and Non-magnetic stainless steel construction including cooler tubs and sink basins.
- 15BS, 15BC and EDC feature removable front speed rail for bottles or condiments.
- Coolers feature High Quality NSF approved refrigerator style seal.
- 100% Stainless Steel hardware for a lifetime of dependability.
- High Quality condiment containers and entree pans.
- Built to be installed in all common masonry, wood or steel stud enclosures.*
- Easy Installation.....Just drop in and hook up plumbing.
- Sized to fit any standard countertop depth.
- Cooler units feature fully insulated construction including lid assembly.
- Fully Assembled construction. All you have to do is install.*
- Includes visible frame to cover rough opening.
- OCI-15BC AND OCI-15BS include two clear plastic condiment trays.
- OCI-DC2 AND OCI-EDC include three clear plastic condiment trays.
- OCI-15ST includes three Stainless Steel holding pans and one water pan.
- OCI-15BS and OCI-DS include single flow faucet and Nickel plated brass drain.

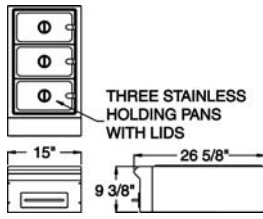
Shipping Weights are as follows;

- OCI-15BC, OCI-15ST and OCI-15BS = 42 lbs per unit.
- OCI-DC2 = 52 lbs per unit.
- OCI-DS = 28 lbs per unit.
- OCI-EDC = 70 lbs per unit.

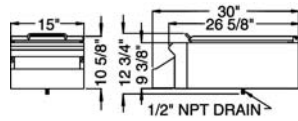
*Please see installation and general dimensions on reverse side.



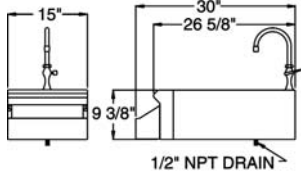
PRODUCT SPECS FOR OCI-15ST



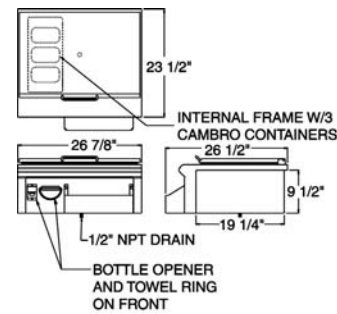
PRODUCT SPECS FOR OCI-15BC



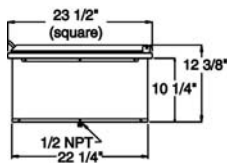
PRODUCT SPECS FOR OCI-15BS



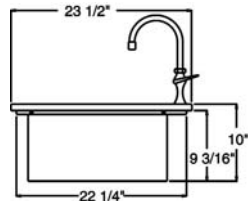
PRODUCT SPECS FOR OCI-EDC



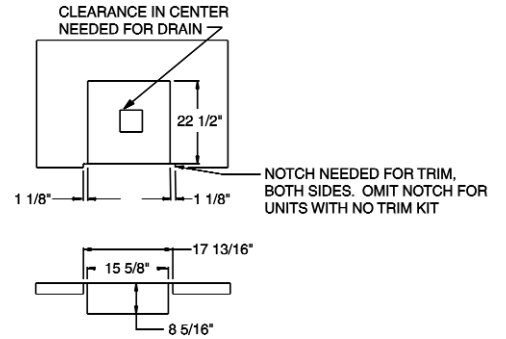
PRODUCT SPECS FOR OCI-DC2



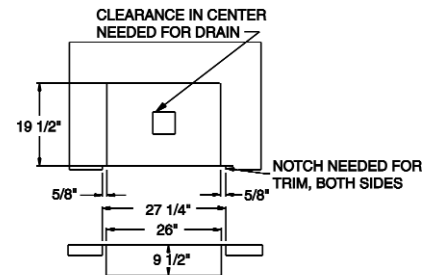
PRODUCT SPECS FOR OCI-DS



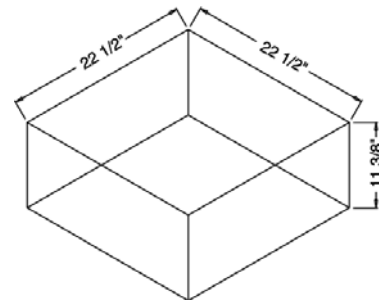
CUTOUT DIMENSIONS FOR OCI-15BC, 15BS & 15ST



CUTOUT DIMENSIONS FOR OCI-EDC



CUTOUT DIMENSIONS FOR OCI-DC2, OCI-DS



OCI manufactures a complete line of Stainless steel grills and accessories to enhance your outdoor kitchen. We have worked with world class chefs to design the most efficient, ergonomic, products for your entertaining needs. We offer a complete line of outdoor stainless steel grills to fit anyone's culinary appetite. Our grills range in sizes from our portable table top 19" unit to a 48" grill suitable for large entertaining. The 36" and 48" products are both manufactured with the gourmet cook in mind. We offer both grills with an adjustable low to high sear zone section for searing your favorite meat. The rotis motor will hold up to 50 pounds and incorporates a 50-watt halogen light for evening cooking. The grates are all made of thick 3/8" stainless steel. For those customers that would like to have the added benefit of portability we offer a complete line of grill carts that accommodate all sizes of our OCI grills.

For more information on our complete line of outdoor products or to find out where to get them, please call **1.714.903.1885** or visit **www.ociproducs.com**

Warranty

1-Year Full replacement Warranty on all components due to manufacturer defects in craftsmanship.

5-Year Warranty on all Stainless Steel Parts.

Stainless Steel door sets are covered for 1 full year from date of purchase, and 5 full years on all stainless steel parts only by defects in workmanship. A copy of the original receipt is required for all warranty claims. Please keep a copy of this handout along with original receipt for your files.

*Because of continuing product improvement these specifications are subject to change without notice.