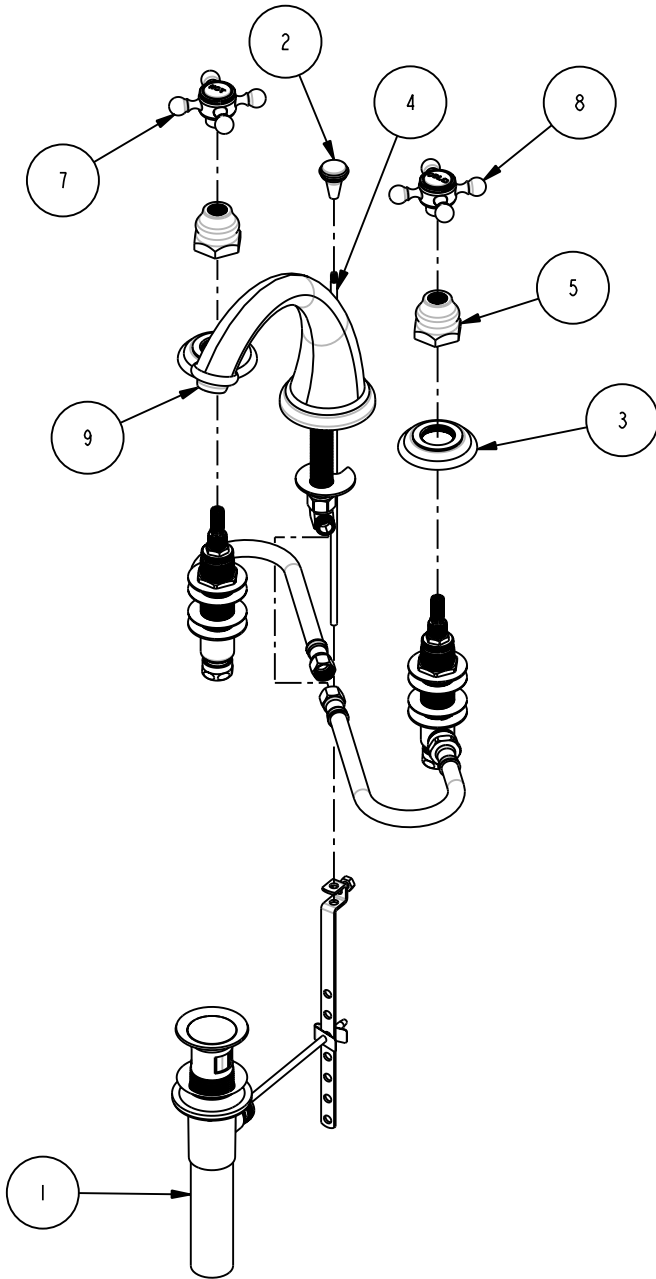
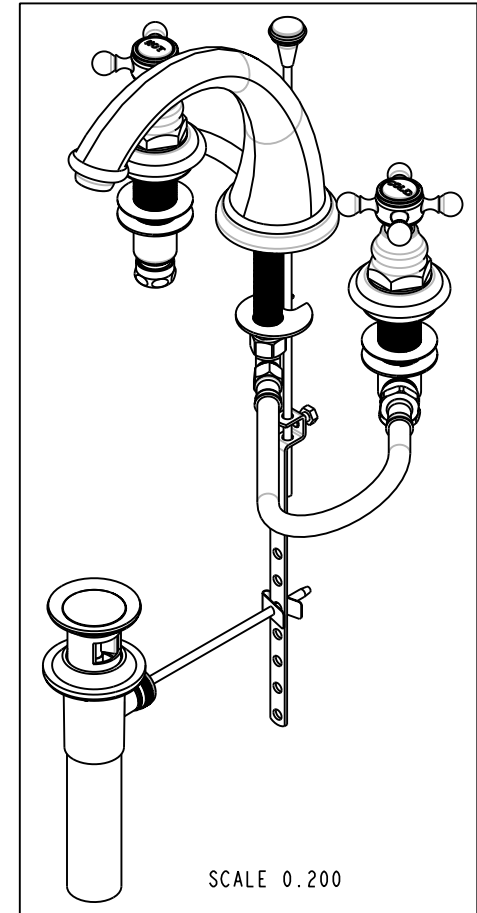


NOTES:



BILL OF MATERIAL (CURRENT LEVEL)

ITEM	PT/ASSY	DESCRIPTION	TYPE	QTY.
1	325	POP UP ASSEMBLY	ASSEMBLY	1
2	10021	POP-UP KNOB	PART	1
3	10048	ESCUTCHEON W/S VALVE	PART	2
4	10288	3/16" POP UP ROD	PART	1
5	10523	HEX ESCUTCHEON BONNET	PART	2
6	1-525	W/S VALVE INSTALLATION	ASSEMBLY	1
7	2-141	HANDLE ONLY, HOT	ASSEMBLY	1
8	2-142	HANDLE ONLY, COLD	ASSEMBLY	1
9	3-177	SPOUT, WIDESPREAD	ASSEMBLY	1



BRASSTECH 2001 E. CARNEGIE AVE
INCORPORATED SANTA ANA, CA 92705
(949) 417-5207

WIDESPREAD FAUCET

ASSY. NO.

890

SCALE 0.175

REF. -

SHEET 1

OF 1

COPYRIGHT ©