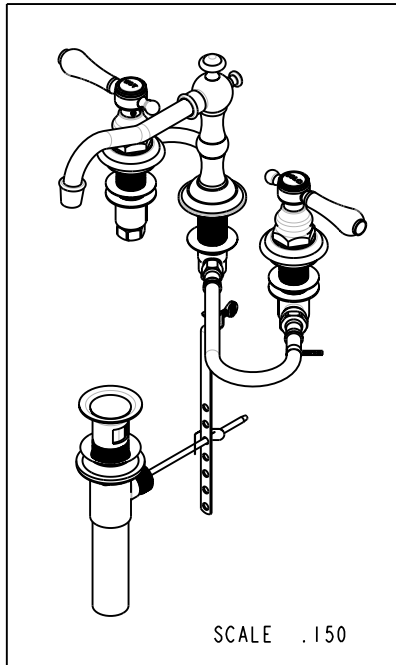


**BILL OF MATERIAL (CURRENT LEVEL)**

ITEM	PT/ASSY	DESCRIPTION	TYPE	QTY.
1	10288	3/16" POP UP ROD	PART	1
2	10048	ESCUTCHEON W/S VALVE	PART	2
3	2-133	HANDLE ASSEMBLY - COLD	ASSEMBLY	1
4	2-134	HANDLE ASSEMBLY - HOT	ASSEMBLY	1
5	10523	HEX ESCUTCHEON BONNET	PART	2
6	325	POP UP ASSEMBLY	ASSEMBLY	1
7	10289	POP-UP KNOB	PART	1
8	98037	STICKER LABEL A112.18.1	PART	1
9	1-525	W/S VALVE INSTALLATION	ASSEMBLY	1
10	3-168	WIDE SPREAD SPOUT ONLY	ASSEMBLY	1



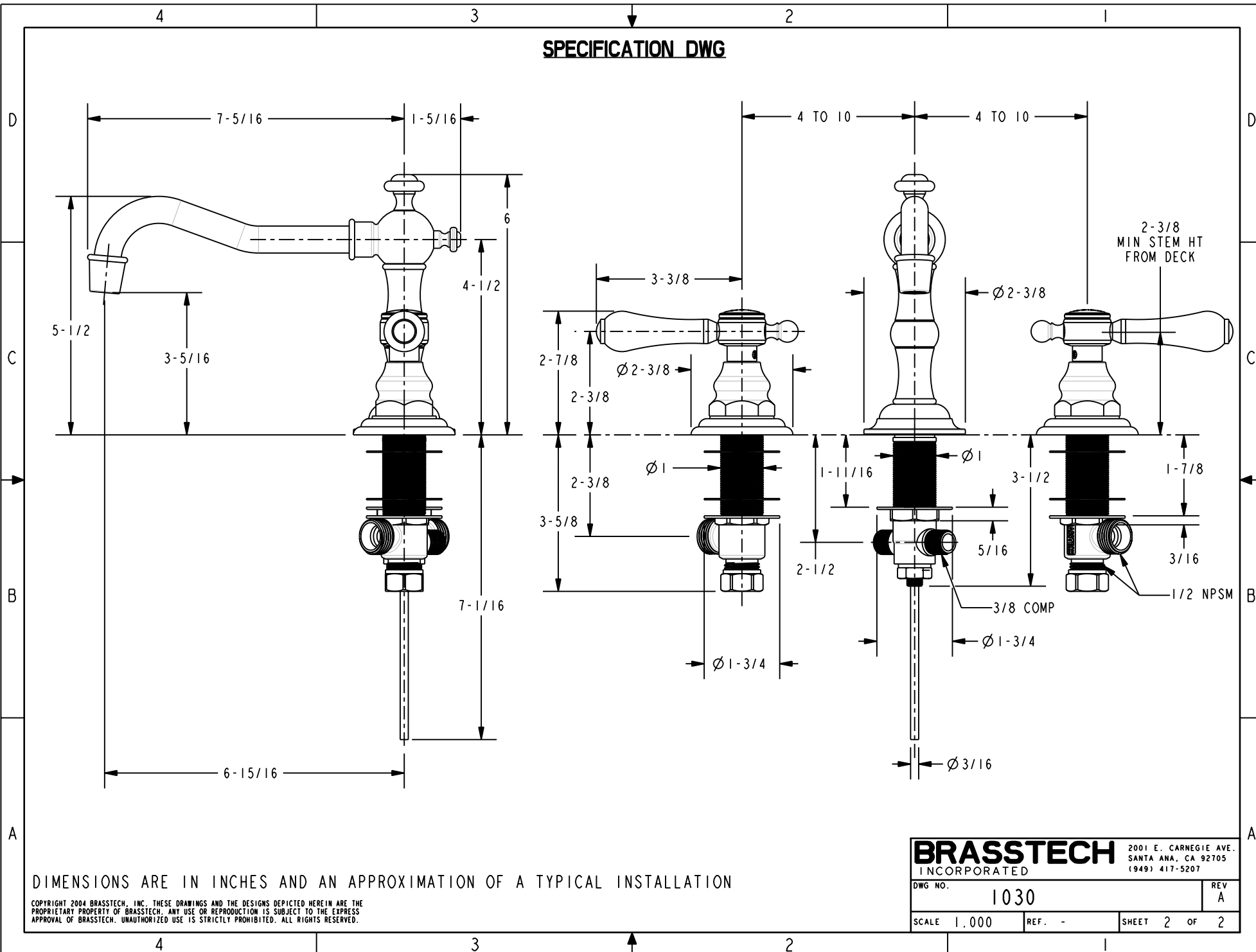
COPYRIGHT 2003 BRASSTECH, INC. THESE DRAWINGS AND THE DESIGNS DEPICTED HEREIN ARE THE PROPRIETARY PROPERTY OF BRASSTECH. ANY USE OR REPRODUCTION IS SUBJECT TO THE EXPRESS APPROVAL OF BRASSTECH. UNAUTHORIZED USE IS STRICTLY PROHIBITED. ALL RIGHTS RESERVED.

**BRASSTECH**  
INCORPORATED  
2001 E. CARNEGIE AVE.  
SANTA ANA, CA 92705  
(949) 417-5207

**WIDESPREAD FAUCET SET**

ASSY. NO. <b>1030</b>		A	EO-0148	01/29/03
SCALE .240	REF. -	-	RELEASED	06/09/03
SHEET 1 OF 2	REV	REV DESC	DATE	

**SPECIFICATION DWG**



DIMENSIONS ARE IN INCHES AND AN APPROXIMATION OF A TYPICAL INSTALLATION

COPYRIGHT 2004 BRASSTECH, INC. THESE DRAWINGS AND THE DESIGNS DEPICTED HEREIN ARE THE PROPRIETARY PROPERTY OF BRASSTECH. ANY USE OR REPRODUCTION IS SUBJECT TO THE EXPRESS APPROVAL OF BRASSTECH. UNAUTHORIZED USE IS STRICTLY PROHIBITED. ALL RIGHTS RESERVED.

<b>BRASSTECH</b>		2001 E. CARNEGIE AVE.	
INCORPORATED		SANTA ANA, CA 92705	
		(949) 417-5207	
DWG NO.	1030	REV	A
SCALE	1:000	REF.	-
		SHEET	2 OF 2