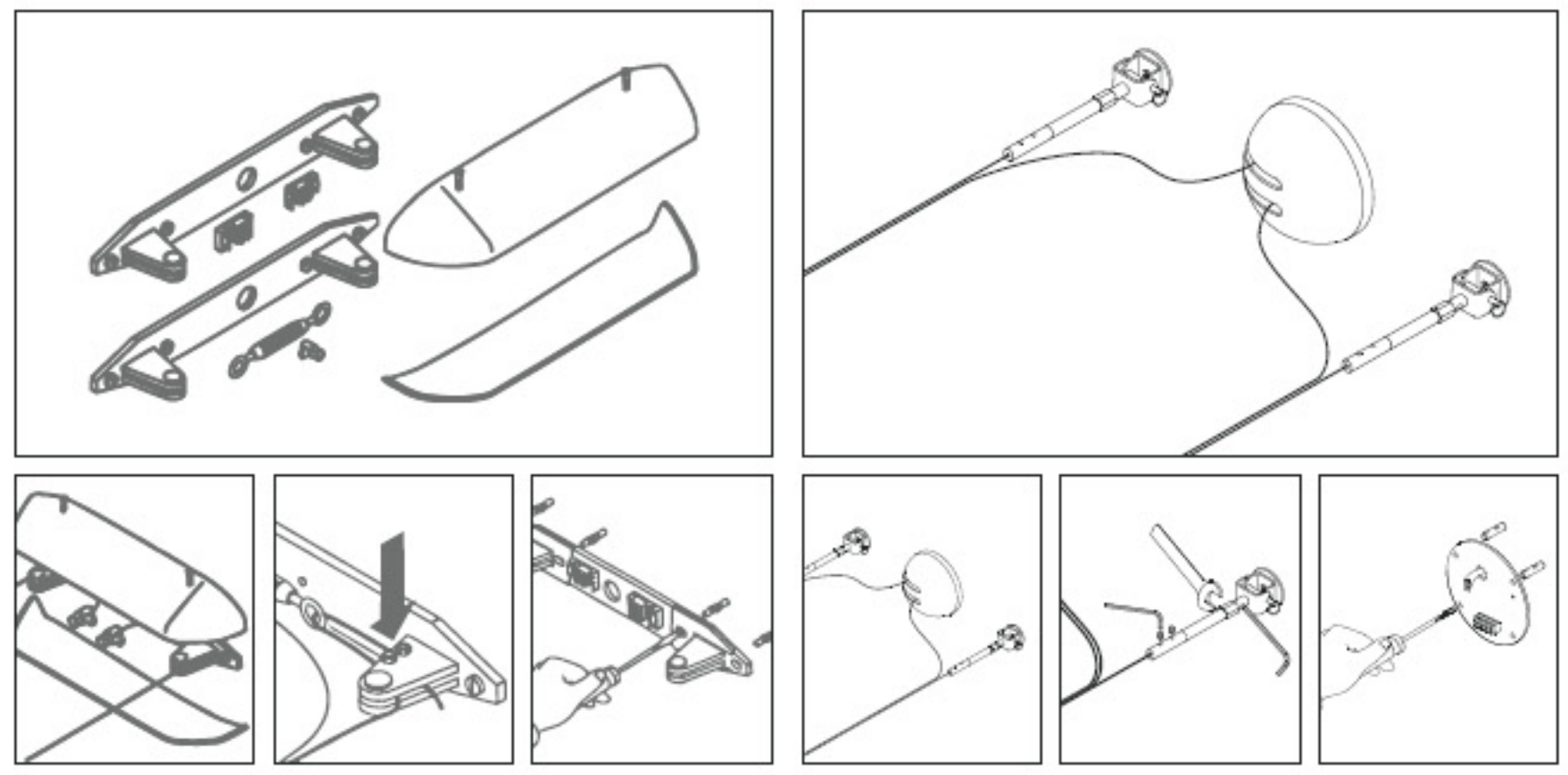


Bridge system components

Design | Mario Barbaglia,
Marco Colombo

Bridge system support

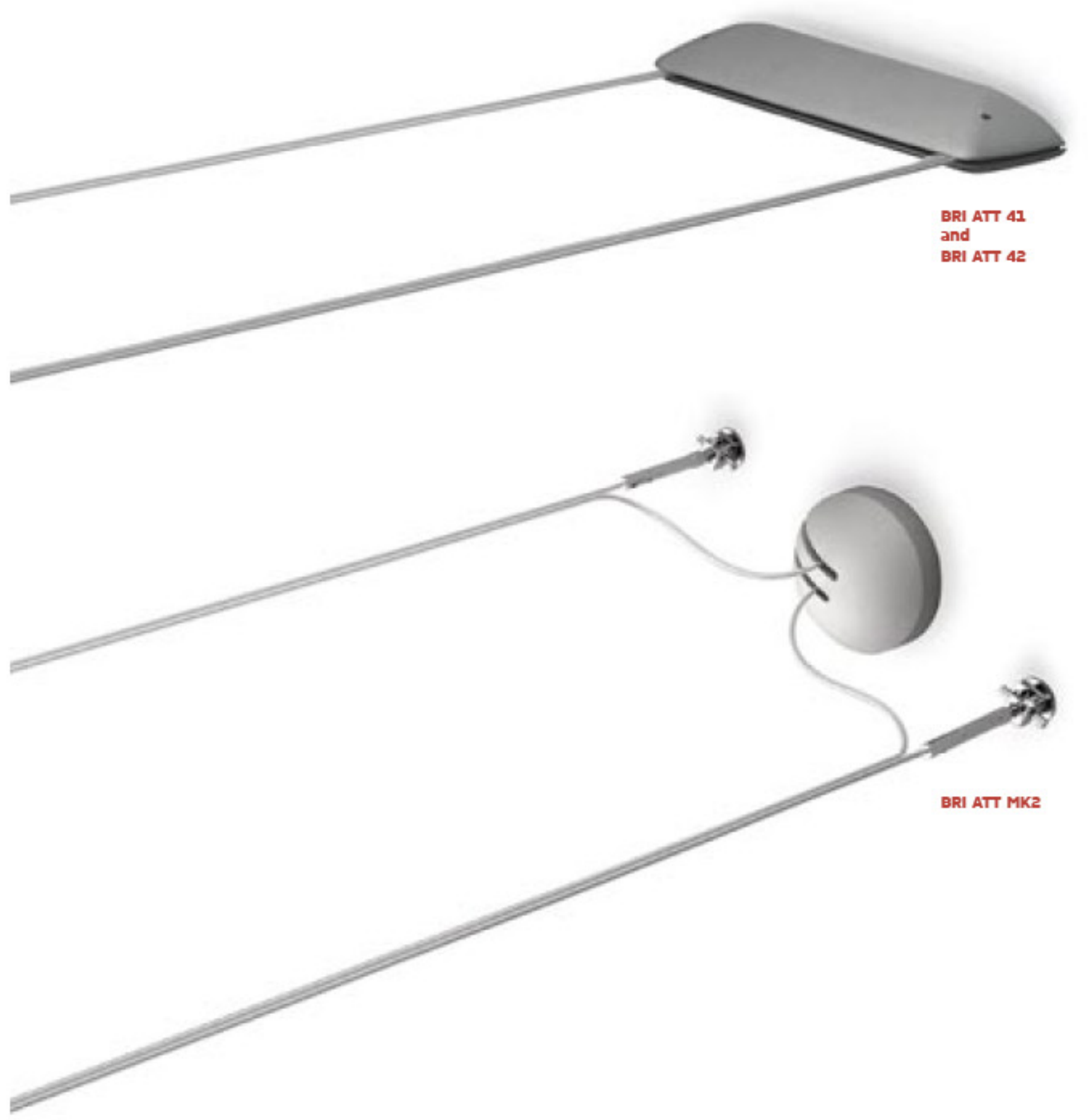


BRI ATT 41
Wall or ceiling mount with power supply

BRI ATT 42
Wall or ceiling mount with tumbuckle/end of run
14" length x 2" wide x 1" height

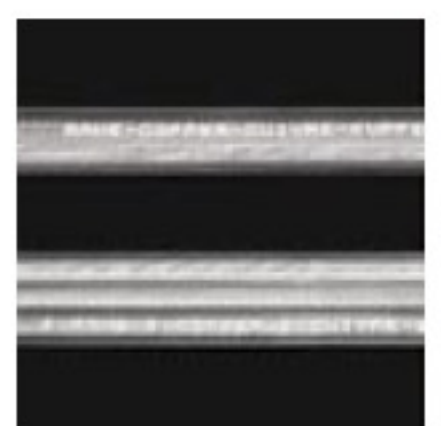


BRI ATT MK2
Not currently available in the USA



BRI ATT 41 and BRI ATT 42

BRI ATT MK2



BRI CAB
Cable
Each cable consists of two insulated copper conductors and one insulated steel support wire. Maximum wire power for complete system is 3600watts



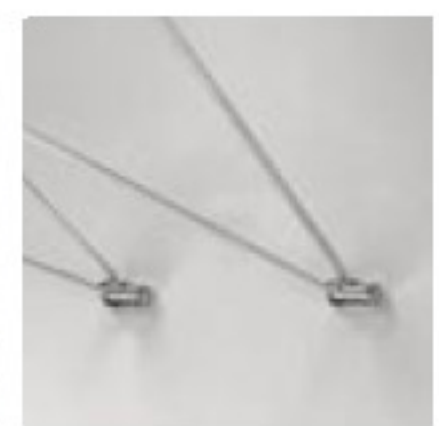
BRI ALI 41
Bridge ceiling power supply
Optional. Use only when system is mounted wall to wall but power supply is in the ceiling. For double switch use two feeders. Two tumbuckles will be required for wall to wall mounting.



BRI DEV 41
Ceiling cable holder
Holds cable 21" from ceiling but can be reduced to 12" Required for ceiling mounted systems.
13" wide, height is adjustable



BRI SUP 41
Bridge ceiling cable suspension
To reduce cable bending when system length exceeds 25 feet Steel cable with chrome hardware
1" wide x max 118" height



BRI DEV 31
Bridge wall cable holder
Allows a cable angle change of 45° horizontally as pictured or 10° side to side. Chrome finish
1" square x 1/8" height