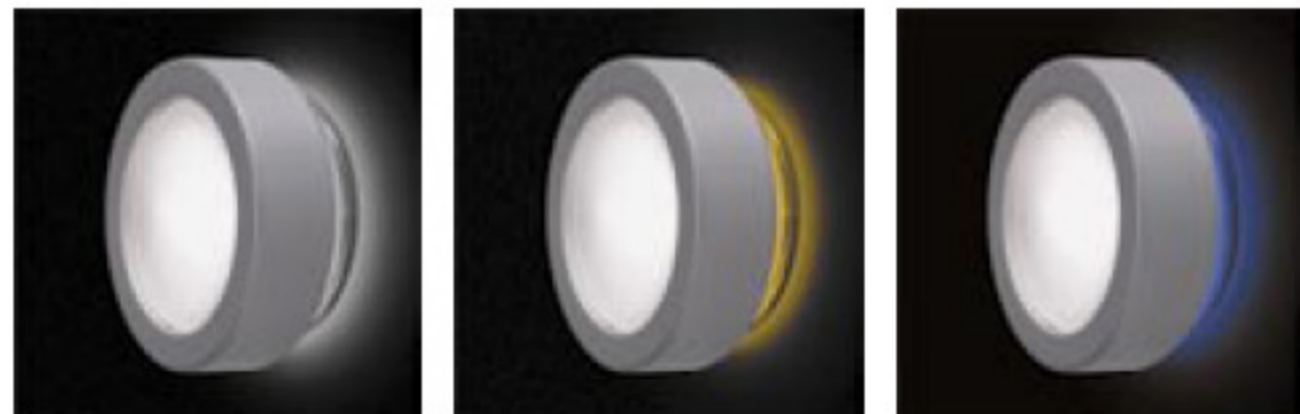


# Aquarius



Design | Mario Barbaglia,  
Marco Colombo

Sealed lamp for indoor and outdoor use, wall or ceiling mounted. In addition to producing direct light, Aquarius is characterized by a secondary light output which can be projected onto the ceiling or wall, slightly tinted according to the color of the finish on the lamp body. The components of the lamp are visible through the polycarbonate body.  
 Mounting | Wall and ceiling mount. Suitable for installation on normally inflammable surfaces. Can be mounted to 4" octagonal junction box.  
 Materials | Diffuser in molded glass with prismatic surface. Polycarbonate body.  
 Finishes | Ring in silver grey epoxy-coated steel or in chromed brass. Polycarbonate body in red, blue, amber or transparent.



**Aquarius**

9 3/4" diameter,  
3 3/4" height/projection

-  100W, E26, A19, incandescent
-  26W, G24-q3, compact fluorescent, electronic ballast, 120 Volt

ADA Wet location, outdoor

