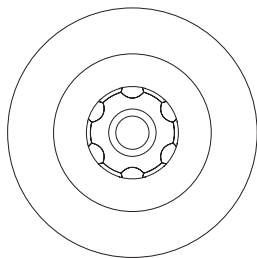
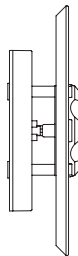


AURORA Circle 30 P

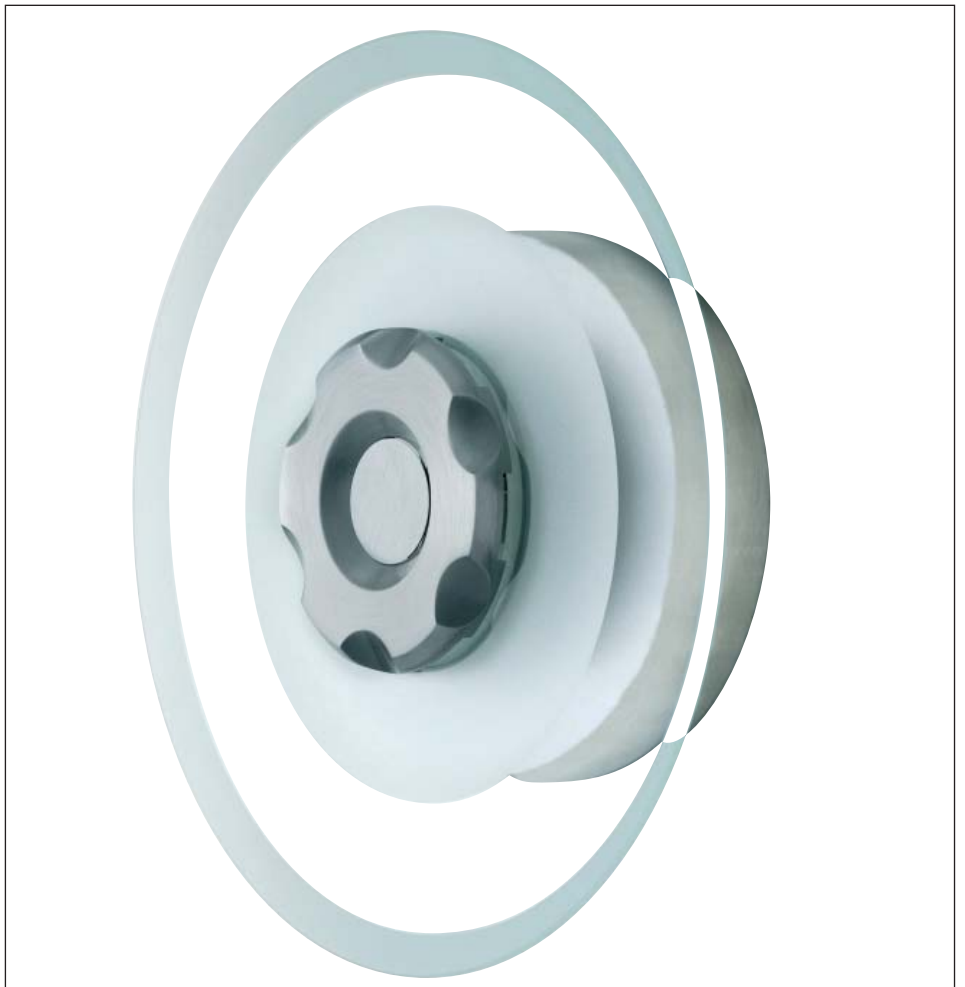
Designer
Ettore Cimini - 2005



Ø30
(1 1/2")



8,5
(3/4")





Apparecchio di illuminazione da parete in alluminio e alluminio pressofuso spazzolato con struttura portante in acciaio sostenente un vetro rotondo opportunamente sagomato e lavorato per diffondere la luce di due lampadine alogene tipo G9 da 75W.

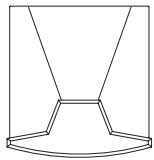
Wall light fitting made out of die-cast aluminium with a steel frame holding a round glass of optic quality carefully machined and polished in order to diffuse the light of two halogen bulbs G9 75W.

Wandleuchte aus Aluminium und gebürstetem Pressgussaluminium mit Struktur aus Stahl, die ein besonders geformtes rundes Glas hält, das speziell für die Diffusion der Lichtstrahlen von zwei Halogenleuchtmittel Typ G9 von 75W bearbeitet wurde.

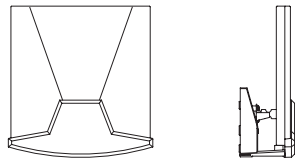


Col. 34
Spazzolato zaponato
Brushed
Gebürstet

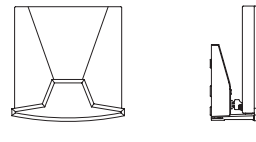
Denominazione - Name - Name	Aurora Circle 30 P (cod. 540)
Certificazioni - Certificated - Prüfzeichen	
Normative - Norms - Normen	EN 60-598 (CEI 34-21)
Lampadina - Light sources - Leuchtmittel	2 x MAX 75W - G9
Versioni - Available - Versionen	230V (Europe) - 110V (USA - Japan) - 240V (England)
Classe di isolamento - Insulation Class - Isolierungsklasse	I
Classe di protezione - Protection Class - Protektionsgrad	IP20
Imballo - Packaging - Verpackung	 0,035m ³ - 5,000Kg



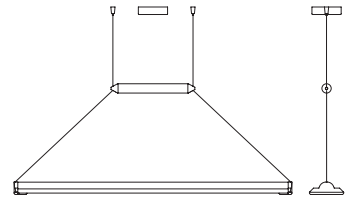
Cod. 520
Aurora Parete 20



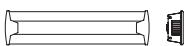
Cod. 521
Aurora Parete 20 L



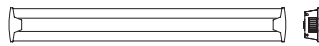
Cod. 523
Aurora Parete 14



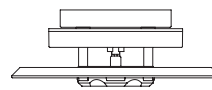
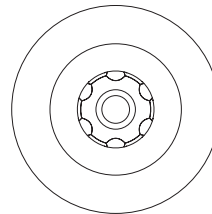
Cod. 525
Aurora Swing 120



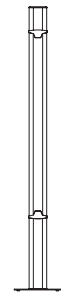
Cod. 534
Aurora Flat 60



Cod. 535
Aurora Flat 120



Cod. 541
Aurora Circle 30 S



Cod. 550
Aurora Tower 180

Notes
