

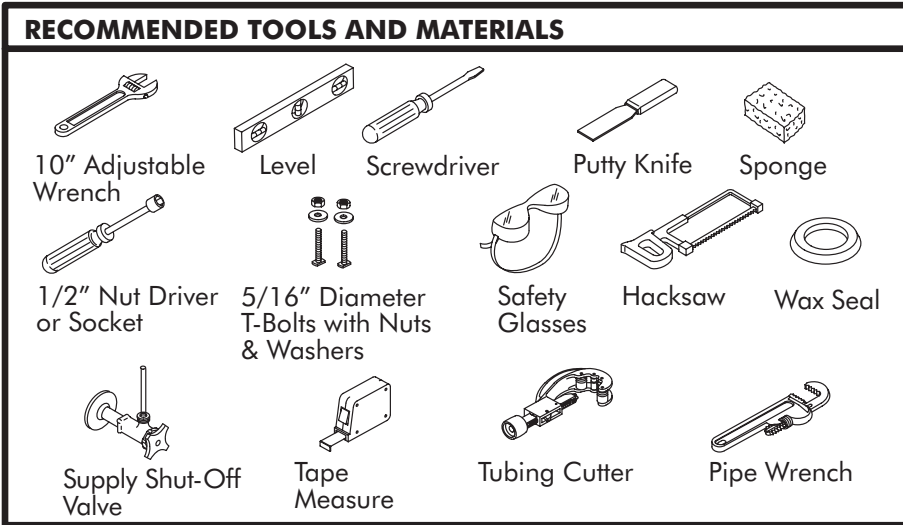
INSTALLATION

G U I D E

CLOSE
COUPLED
TOILET WITH
TOP-MOUNT
TRIP LEVER

THE BOLD LOOK
OF **KOHLER**®

RECOMMENDED TOOLS AND MATERIALS



BEFORE YOU BEGIN

Observe all local plumbing and building codes.

Carefully inspect the new toilet for damage.

If the existing toilet does not have a supply shut-off valve below the tank, install one before installing the new toilet.



CAUTION: Risk of personal injury or product damage. Handle with care. Vitreous china can break or chip if the bolts and nuts are overtightened, or if the product is handled carelessly.

1. REMOVE THE EXISTING TOILET

Turn the water supply off. Flush the toilet, and sponge out any remaining water.

Disconnect the water supply connection.

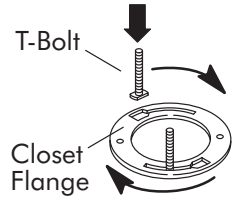
Remove the old bolt caps, toilet, and T-bolts, and scrape off the old wax seal from the closet flange.

Scrape off old wax seal



Insert new T-bolts.

If installation of the new toilet is delayed, temporarily cover the closet flange hole with a rag.



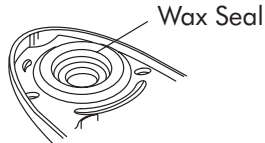
2. INSTALL THE NEW BOWL

Record model number in Homeowners Guide.

From the bottom of the bowl, firmly press a new wax seal around the bowl outlet.

Remove the temporary rag (if used) from the closet flange.

Bowl Outlet

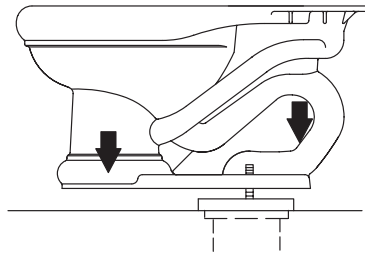


CAUTION: Risk of external leakage. Do not lift or rock the bowl after placement - if you break the watertight seal, you must install a new wax seal.

Align and lower the bowl over the closet flange and T-bolts.

Apply full body weight around the bowl rim to set the seal.

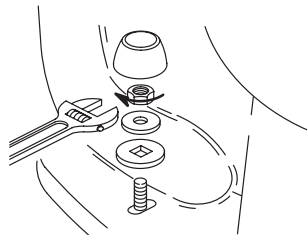
DO NOT assemble metal washers and nuts on T-bolts at this time.



Assemble the plastic bolt cap bases in "up" position as marked. Now assemble the metal washers and nuts on the plastic bolt cap bases. Tighten the nuts.

CAUTION: Risk of product damage. Protect vitreous china from exposure to saw blade when cutting off excess T-bolt length.

If the T-bolts extend more than 1/4" over the top of the nuts, cut off the excess.



3. INSTALL THE TANK

With three tank bolts preassembled through the gasket holes, position the tank on the bowl by centering the gasket on the bowl inlet. Assemble the washers and nuts to the tank bolts.

Tighten the three nuts so the tank is level. Be sure the nuts are tight enough to achieve a watertight seal.



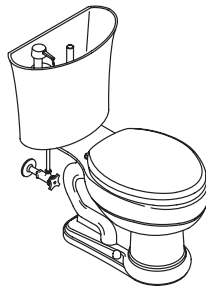
4. CONNECTING THE SUPPLY

Connect the supply shut-off valve to the toilet supply shank.

Open the supply shut-off valve slowly and check for leaks.

Install the toilet seat.

Test flush the toilet several times, and periodically check for leaks for several days following installation.

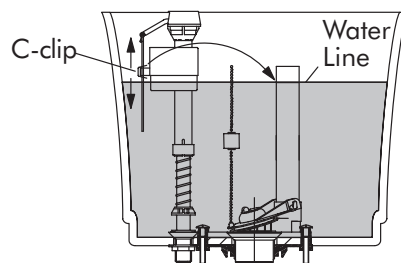


5. ADJUSTMENTS

Adjust the tank water level to the marked water line by squeezing and sliding the C-clip on the float rod.

To raise the water level, slide the C-clip up.

To lower the water level, slide the C-clip down.

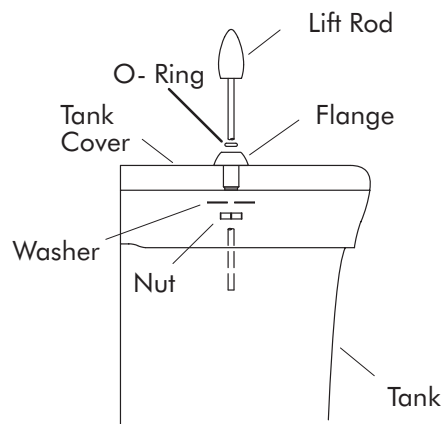


6. LIFT ROD INSTALLATION

Insert the flange into the center of the tank cover.

Insert the lift rod into the flange. Hold lift rod while placing the large washer and nut onto the other end of the lift rod. Hand tighten the nut until snug; then wrench tighten 1/4 turn.

Set the tank cover on the tank so the cover bracket fits under the vitreous china tab located on the back of the tank wall.



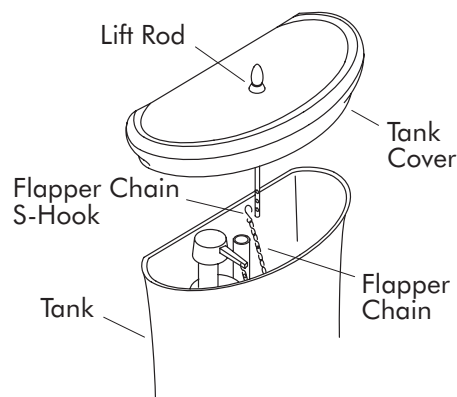
7. TANK COVER INSTALLATION

Carefully lift the front of the tank cover just enough to gain access to the flapper chain and lift rod. Insert the flapper chain S-hook into the middle hole in the lift rod. Set the tank cover onto the tank. Be sure the cover bracket and vitreous china tab are engaged.

Test flush the toilet several times to ensure proper operation. If the flapper ball does not seat properly when the lift rod is raised, provide more flapper chain by:

- relocating the flapper chain S-hook to the bottom hole in the lift rod, or by;
- repositioning the flapper chain S-hook on the flapper chain.

If the toilet does not flush when the lift rod is raised, remove some of the slack in the flapper chain by relocating the flapper chain S-hook to the top hole in the lift rod.



CALL US FOR HELP

Questions? Problems? First review the installation instructions to ensure correct installation. For additional assistance in the USA, call our Customer Service Department for direct help. You may also contact us at our web site listed below.

1-800-4-KOHLER

THE BOLD LOOK
OF **KOHLER**[®]
www.kohlerco.com