



### Features:

- Cast brass spout and valves
- Ceramic disc valve cartridge
- Adjustable hot limit safety stop
- Pressure Balance cartridge maintains constant output temperature in response to changes in relative hot and cold supply pressures
- Integral diverter
- Available with Cross or Lever Handle
- Adjustable Showerhead

Pictured: 842/400 Tub and Shower Set with Cross Handles

Showerhead Maximum Flow Rate: 2.5 GPM (9.5L/min)

Kit Options	Product Number
Hatteras Pressure Balance Tub & Shower Set - Cross Handle	842/400
Hatteras Pressure Balance Tub & Shower Set - Lever Handle	842/401
Hatteras Pressure Balance Tub & Shower Valve- Cross Handle	842/140
Hatteras Pressure Balance Tub & Shower Valve - Lever Handle	842/141

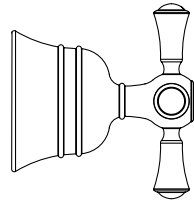


Available Finishes:	
Polished Chrome	100
Brushed Nickel	144
Platinum Nickel	150

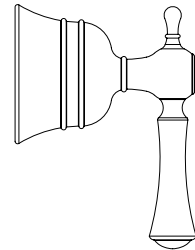
Rough & Trim Options	Product Number
<b>Trim Only - Cross Handle</b> -Includes Pressure Balance Diverter Valve, Shower Head & Tub Spout	842/495
<b>Trim Only - Lever Handle</b> -Includes Pressure Balance Diverter Valve, Shower Head & Tub Spout	842/496
<b>Trim Only - Cross Handle</b> -Pressure Balance Diverter Valve	842/545
<b>Trim Only - Lever Handle</b> -Pressure Balance Diverter Valve	842/546
<b>Shower Head Only</b>	842/083
<b>Tub Spout Only</b>	842/017
<b>Rough Only</b>	899/261/191



### Handle Options:



Cross Handle



Lever Handle




ROUGH-IN DIAGRAM SHOWN ON REVERSE SIDE

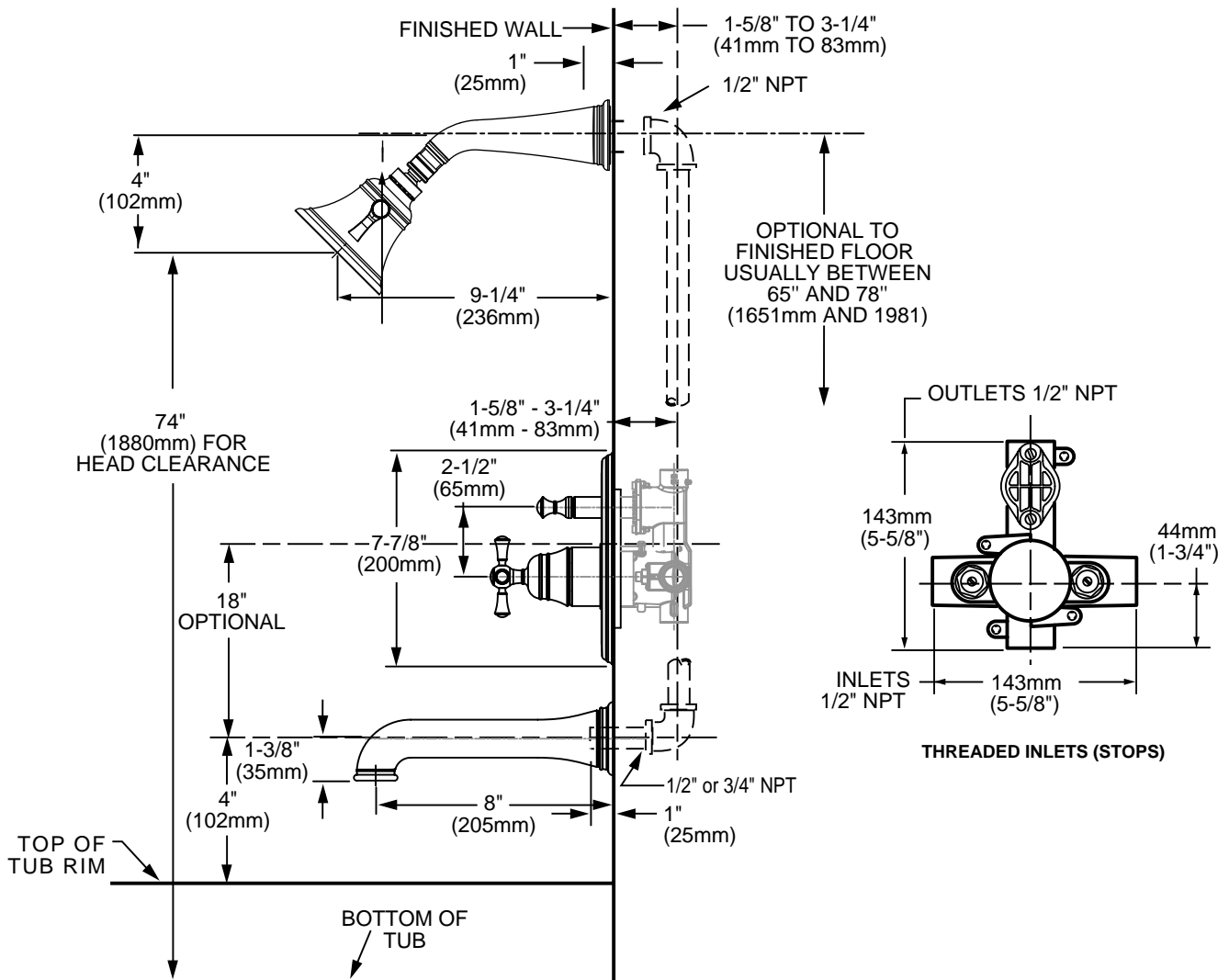
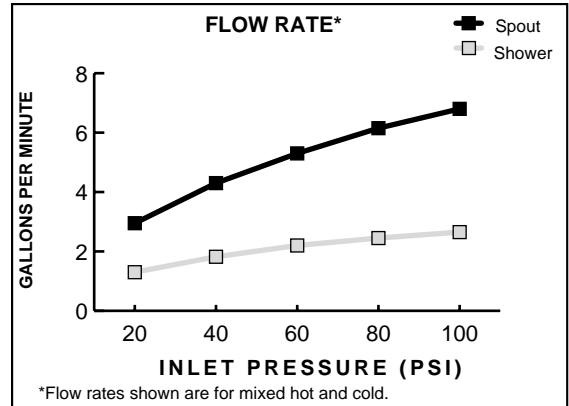
**IMPORTANT:** These Measurements are subject to change or cancellation. No responsibility is assumed for use of superseded or voided pages.

### CODES & STANDARDS

These products meet and exceed the following codes and standards:

- ASME A112.18.1**
- CSA B125**
- ASSE 1016**

 Meets the American Disabilities Act Guidelines and **ANSI A117.1** Requirements for the physically challenged.



**IMPORTANT:** These Measurements are subject to change or cancellation. No responsibility is assumed for use of superseded or voided pages.