

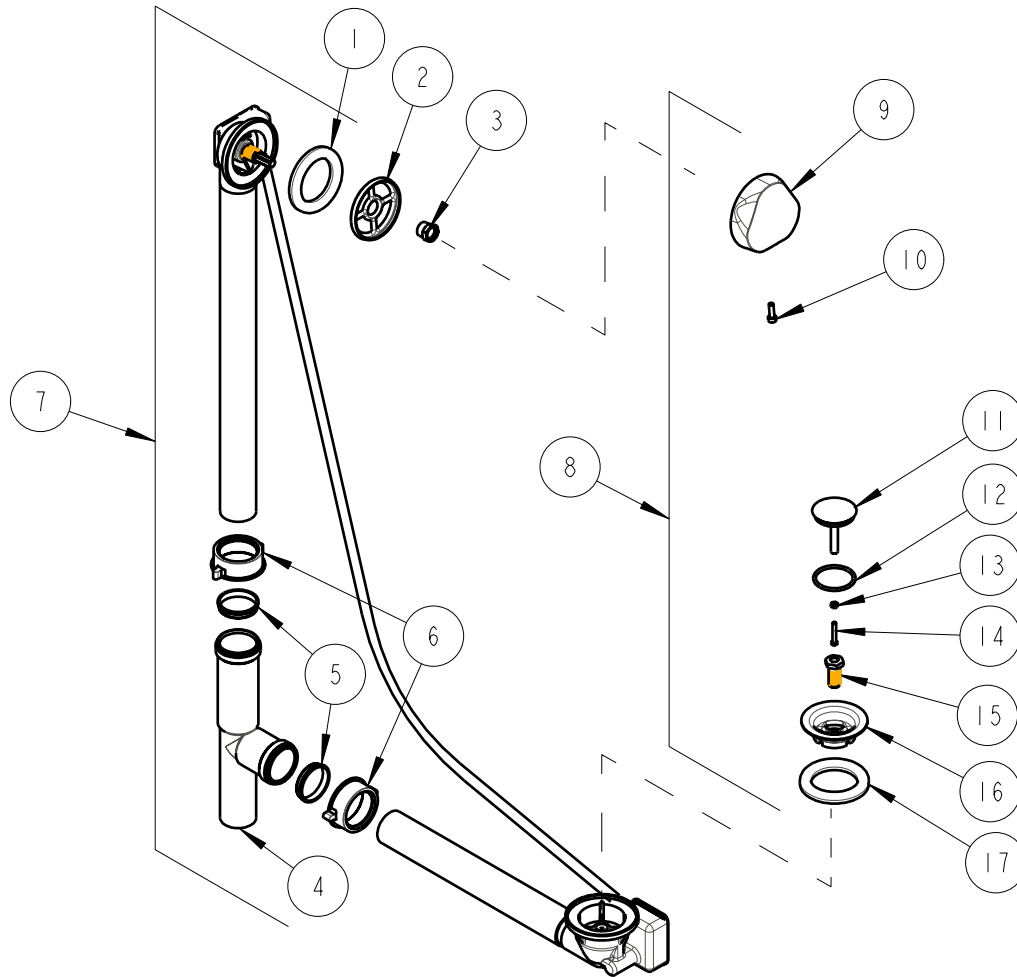
PARTS LIST

BY: JAR
CHK'D:



FINISH: SEE TABLE
DATE: 11-29-04
REV: 12-13-06

150.176.XX.1



NOTE:

* XX INDICATES FINISH CODE, REFER TO TECHNICAL DRAWING FOR COMPLETE LIST OF AVAILABLE FINISHES.

DRAWING NO.	PART NO.	DESCRIPTION
1	241.615.00.1	GASKET PROFILE EPDM 60 D73x49x7
2	241.616.00.1	FLANGE (BWO)
3	241.617.00.1	NUT OVERFLOW BRASS
4	241.618.00.1	TEE PVC D1.5"THDx1.5"THDx1.5"
5	241.619.00.1	COMPRESSION RING LDPE D1.5x1.5
6	241.620.00.1	NUT PP 1.5"
7	150.156.00.1	BATH WASTE & OVERFLOW SUBASSEMBLY
8	240.722.XX.1	TRIM KIT *
9	240.702.XX.1	TURN HANDLE, SOLID BRASS *
10	241.537.00.1	SCREW HEX NICKEL PLATED BRASS M5
11	241.534.XX.1	PLUNGER, SOLID BRASS *
12	241.610.00.1	O-RING NBR D39x3
13	241.611.00.1	NUT HEX BRASS M4
14	241.612.00.1	SCREW BRASS M4x25
15	865.066.22.1	DRAIN SCREW
16	241.612.XX.1	FLANGE SS *
17	241.615.00.1	GASKET PROFILE EPDM 60 D73x49x7