

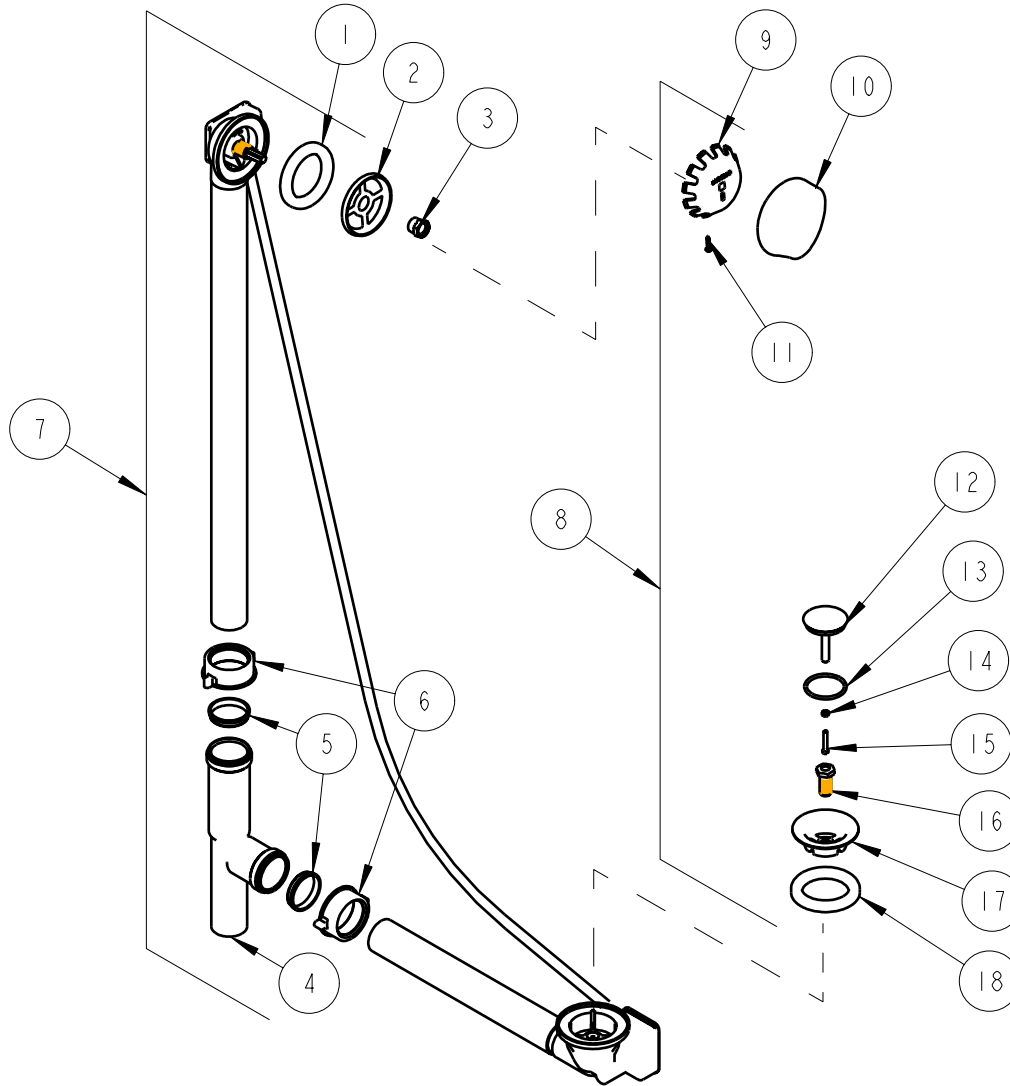
PARTS LIST

BY: JAR
CHK'D:



FINISH: SEE TABLE
DATE: 11-29-04
REV: 12-12-06

150.157.XX.1



NOTE:

* XX INDICATES FINISH CODE, REFER TO TECHNICAL DRAWING FOR COMPLETE LIST OF AVAILABLE FINISHES.

DRAWING NO.	PART NO.	DESCRIPTION
1	241.615.00.1	GASKET PROFILE EPDM 60 D73x49x7
2	241.616.00.1	FLANGE (BWO)
3	241.617.00.1	NUT OVERFLOW BRASS
4	241.618.00.1	TEE PVC D1.5" THDx1.5" THDx1.5
5	241.619.00.1	COMPRESSION RING LDPE D1.5x1.5
6	241.620.00.1	NUT PP 1.5"
7	150.157.00.1	BATH WASTE & OVERFLOW SUBASSEMBLY
8	240.701.XX.1	TRIM KIT (METALLIC FINISHES) *
	240.725.XX.1	TRIM KIT (NON-METALLIC FINISHES) *
9	241.536.00.1	ADAPTER HANDLE PLASTIC (BWO)
10	241.628.XX.1	TURN HANDLE, MOLDED PLASTIC *
11	241.629.00.1	SCREW SS PT NR5
12	240.703.XX.1	PLUNGER, MOLDED (NON-METALLIC FINISHES) *
	241.534.XX.1	PLUNGER, SOLID BRASS *
13	241.610.00.1	O-RING NBR D39x3
14	241.611.00.1	NUT HEX BRS M4
15	241.612.00.1	SCREW BRASS M4x25
16	865.066.22.1	DRAIN SCREW
17	241.612.XX.1	FLANGE *
18	241.615.00.1	GASKET PROFILE EPDM 60 D73x49x7