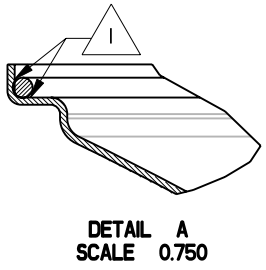
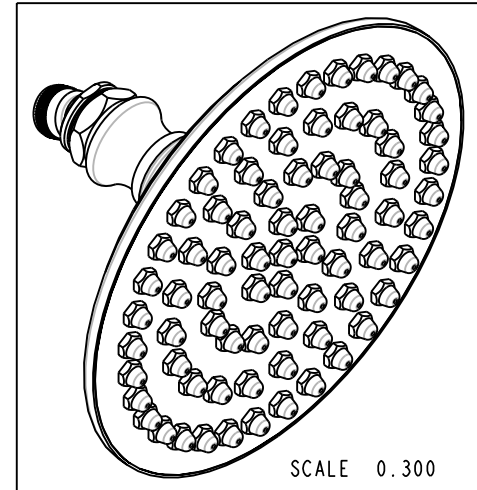
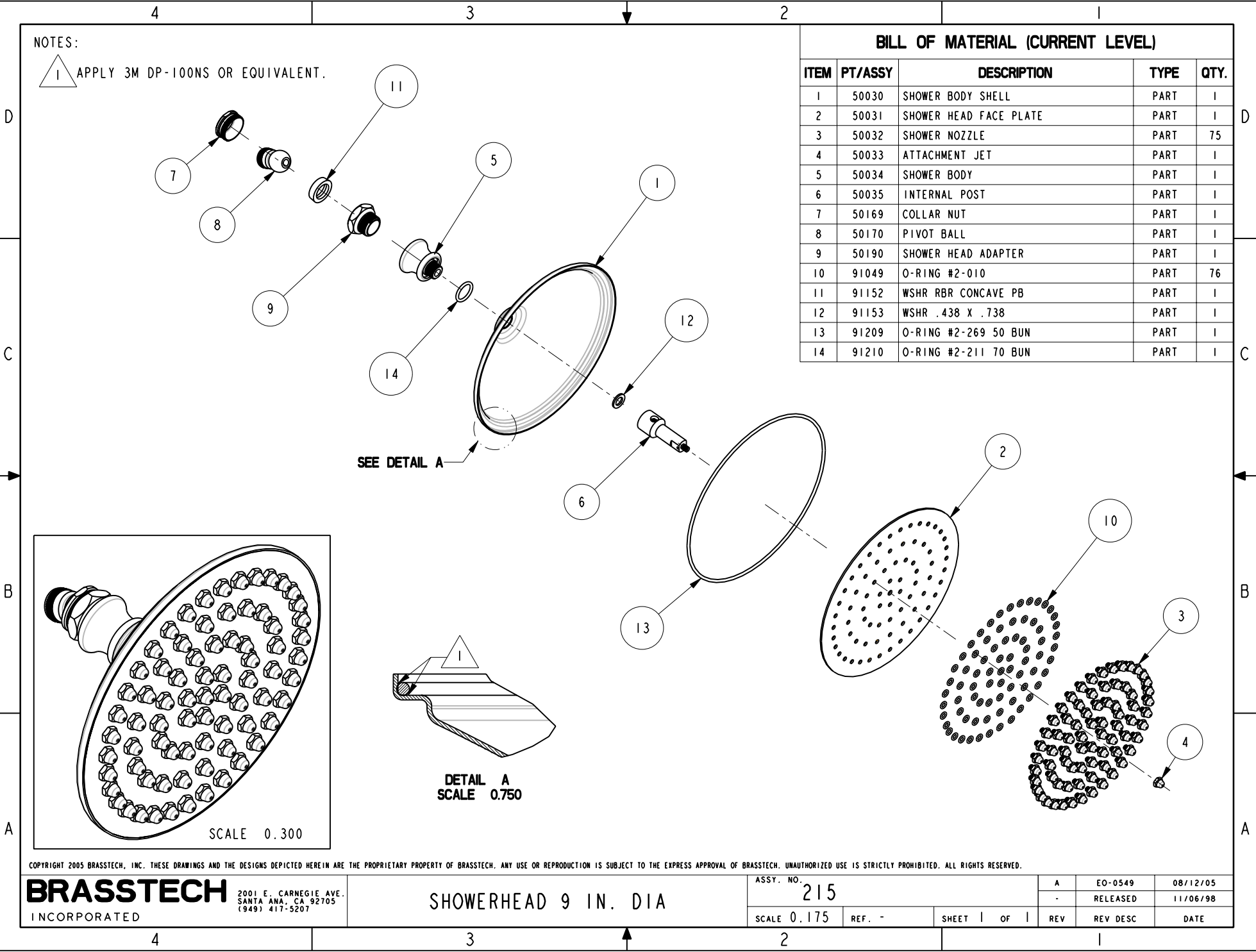


NOTES:

1 APPLY 3M DP-100NS OR EQUIVALENT.

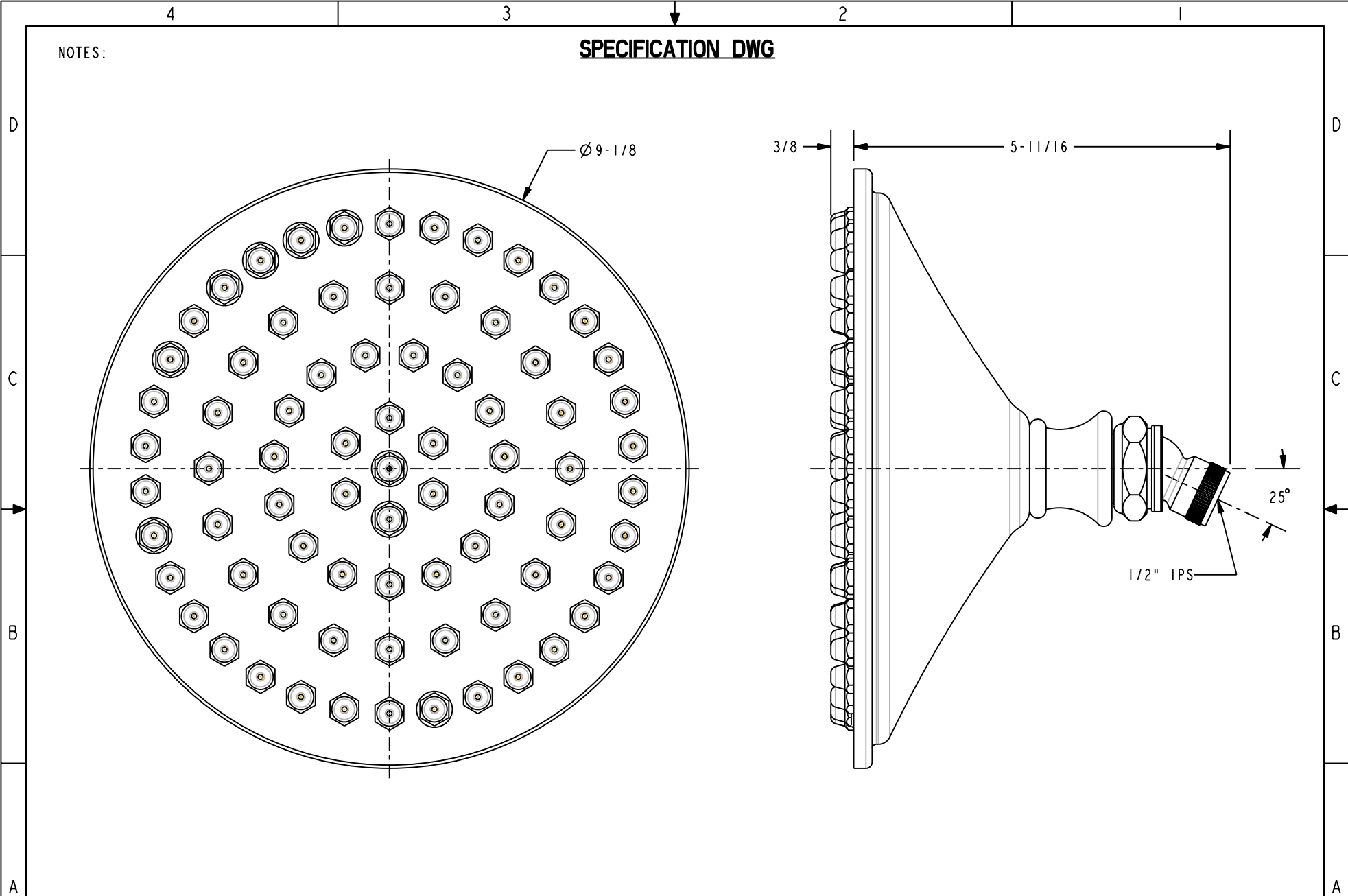
BILL OF MATERIAL (CURRENT LEVEL)

ITEM	PT/ASSY	DESCRIPTION	TYPE	QTY.
1	50030	SHOWER BODY SHELL	PART	1
2	50031	SHOWER HEAD FACE PLATE	PART	1
3	50032	SHOWER NOZZLE	PART	75
4	50033	ATTACHMENT JET	PART	1
5	50034	SHOWER BODY	PART	1
6	50035	INTERNAL POST	PART	1
7	50169	COLLAR NUT	PART	1
8	50170	PIVOT BALL	PART	1
9	50190	SHOWER HEAD ADAPTER	PART	1
10	91049	O-RING #2-010	PART	76
11	91152	WSHR RBR CONCAVE PB	PART	1
12	91153	WSHR .438 X .738	PART	1
13	91209	O-RING #2-269 50 BUN	PART	1
14	91210	O-RING #2-211 70 BUN	PART	1



SPECIFICATION DWG

NOTES:



DIMENSIONS ARE IN INCHES AND AN APPROXIMATION OF A TYPICAL INSTALLATION

BRASSTECH 2001 E. CARNEGIE AVE.
INCORPORATED SANTA ANA, CA 92705
(949) 417-5207

SHOWERHEAD 9 IN. DIA

ASSY. NO. 215_SPEC

SCALE 0.500

REF. -

SHEET 1 OF 1

COPYRIGHT ©