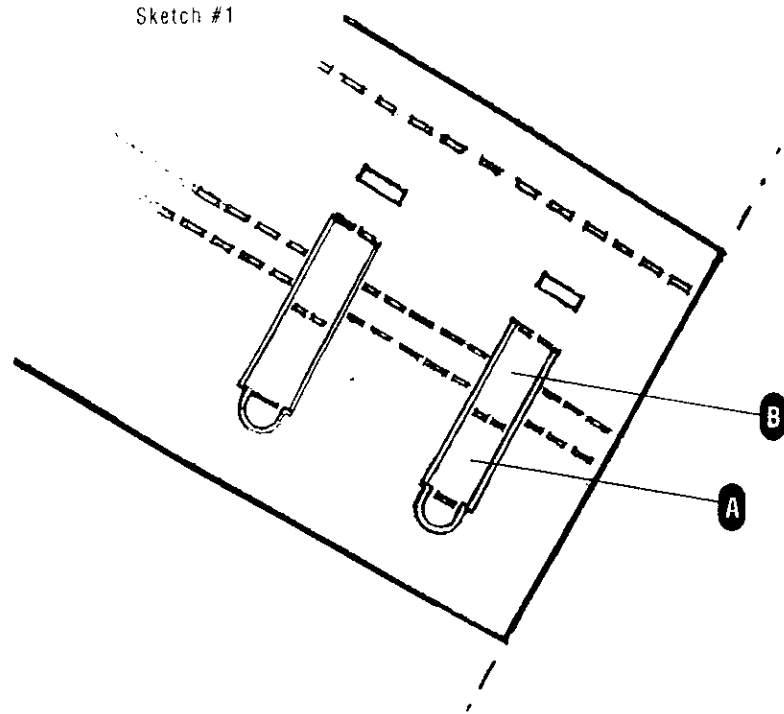


darn

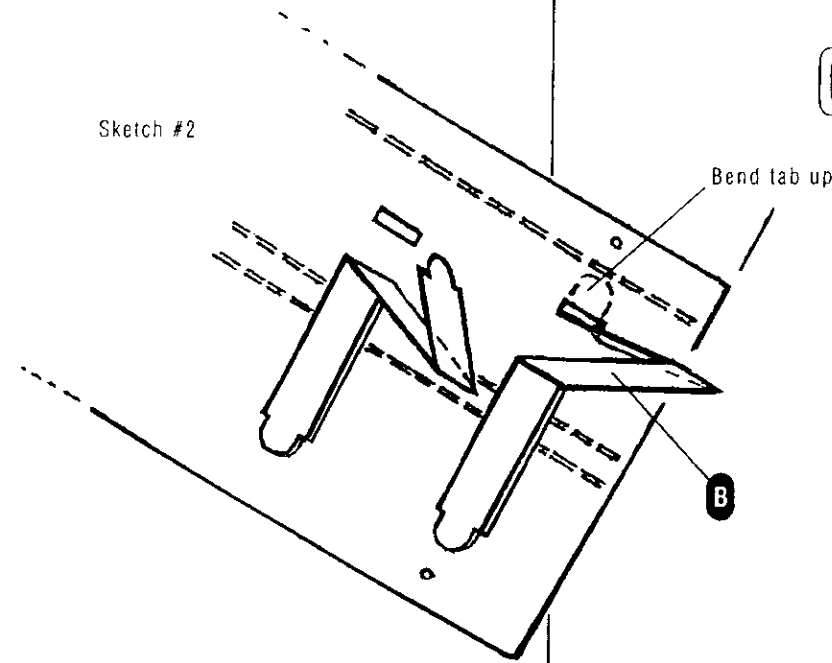
easy!

Sketch #1

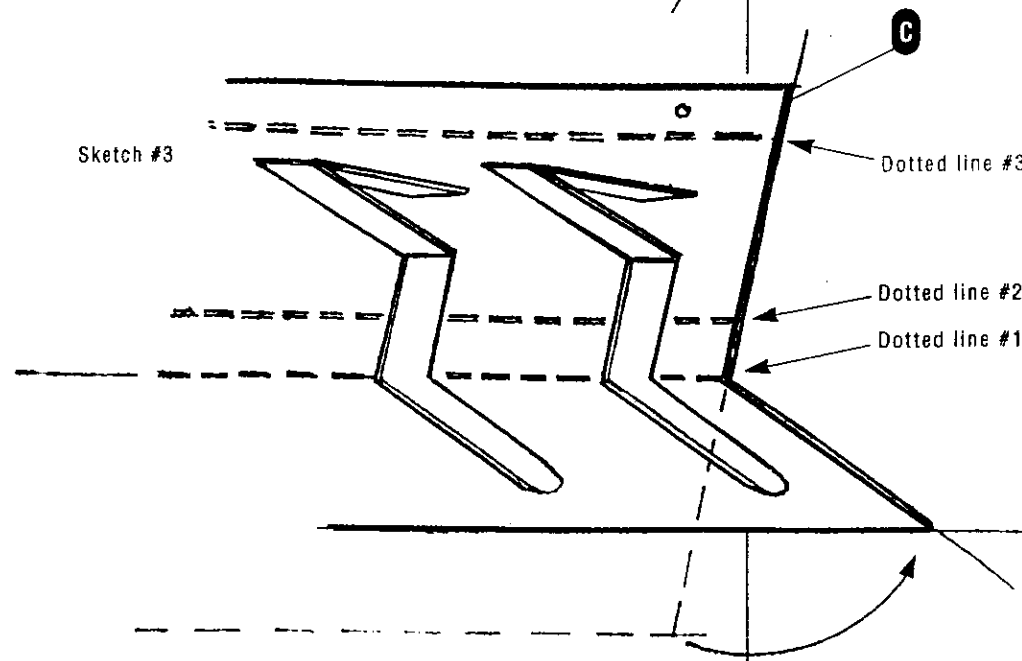


So

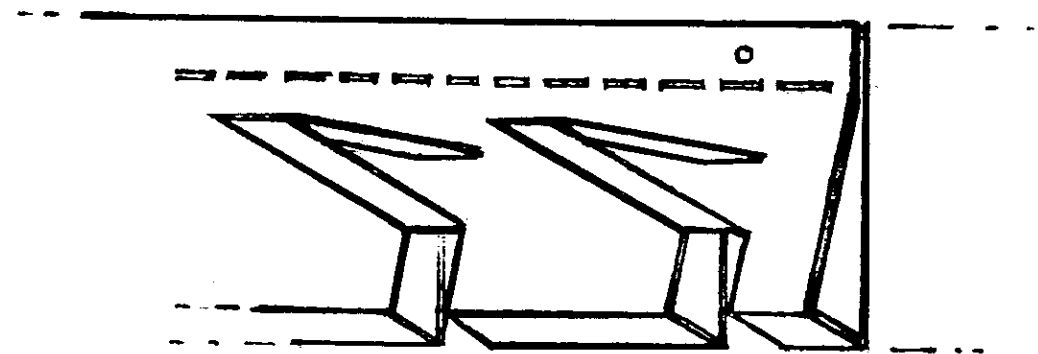
Sketch #2



Sketch #3



Sketch #4



1 Lay the flat piece on a carpet or other soft surface. Orient the piece so that it looks like Sketch #1.

- 1 Bend A up into a sharp angle with B (Sketch #2).
- 2 Bend B up to form the coat "hook". Put tab through slot and bend tab up to secure. (Sketch #2)
- 3 Repeat 4 more times to complete remaining hooks.
- 4 Bend along dotted line #1 to make a 90 degree angle. (Sketch #3)
- 5 Bend along dotted line #2, in the same direction, 90 degrees, to complete the rack. You will need to bend the top flange C slightly, along dotted line #3, so it is flush with the back panel. (Sketch #4) Line up screw holes at the top of the rack.

- 6 MOUNTING YOUR COAT RACK TO THE WALL: Position the rack where you'd like it to be and mark the center screw hole with a pencil (it is best if this is lined up with a stud in the wall). Drill a 3/16" hole and hammer the blue plastic anchor until it is flush with the wall.
- 7 Place the center screw hole over the blue anchor and insert screw. Stand back to level the rack (like hanging a picture). Once level, mark the other two holes. Remove rack from wall, drill remaining two holes, insert blue plastic anchors, and reinstall rack. Tighten screws until snug.