

FEATURED MODEL

511-636 White, 8" bowl depth

ADDITIONAL MODELS

511-635 Biscuit, 8" bowl depth

511-637 Anthracite, 8" bowl depth

511-638 Metallic Gray, 8" bowl depth

FEATURES

- Flat sink deck allows for both drop-in and undermount installation
- 80% rock hard granite
- Color all the way through
- Highly resistant to scratching, staining and all household acids and alkali solutions
- Non-porous, easy-to-clean
- Heat resistant to 536° F
- Extremely hygienic, does not absorb odors or bacteria

CODE/STANDARDS COMPLIANCE

ANSI Z124.6-97

IAPMO/UPC listed

OPTIONAL ACCESSORIES

Sink Grid: 511-936

Cutting Board: 511-136

Deluxe Strainer: 950-225 (P.V.D. Brass)

950-224 (Chrome)

WARRANTY

Blanco America's SILGRANIT® Series sinks feature a "NO HASSLE" LIMITED LIFETIME WARRANTY to be free of all manufacturing defects under normal use. See our complete warranty for details.

While Blanco America endeavors to provide accurate information, all dimensions are nominal, cannot be guaranteed, and are subject to change or cancellation. Blanco America assumes no responsibility for use of superseded or voided specifications.

PRODUCT SPECIFICATION

Drop-In/Undermount sink to be single bowl design, 15" in length and 15" in front-to-back depth. Sink to be made from Silgranit® hard composite material. Sink to feature straight bowl sides with 5/8" cutout corner radius. Sink to be Blanco (Check one)

Model 511-635

Model 511-636

Model 511-637

Model 511-638

with bowl depth of 8".

White 511-636

Biscuit 511-635

Anthracite 511-637

Metallic Gray 511-638

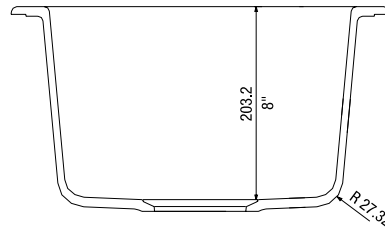
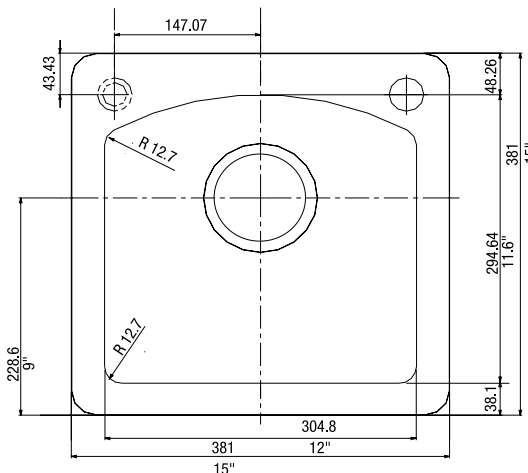


MODEL 511-636 Shown

NOMINAL DIMENSIONS

OVERALL	CUTOUT SIZE	BOWL DEPTH	DRAIN DIAMETER
15 x 15	14-1/4 x 14-1/4	8	3-1/2

DXF cutout templates (Undermount and Drop-In versions) available on our web site or this specification CD.



JOB INFORMATION

Job Name: _____

Contact: _____

Date Specified: _____

Specifier: _____

Contractor: _____