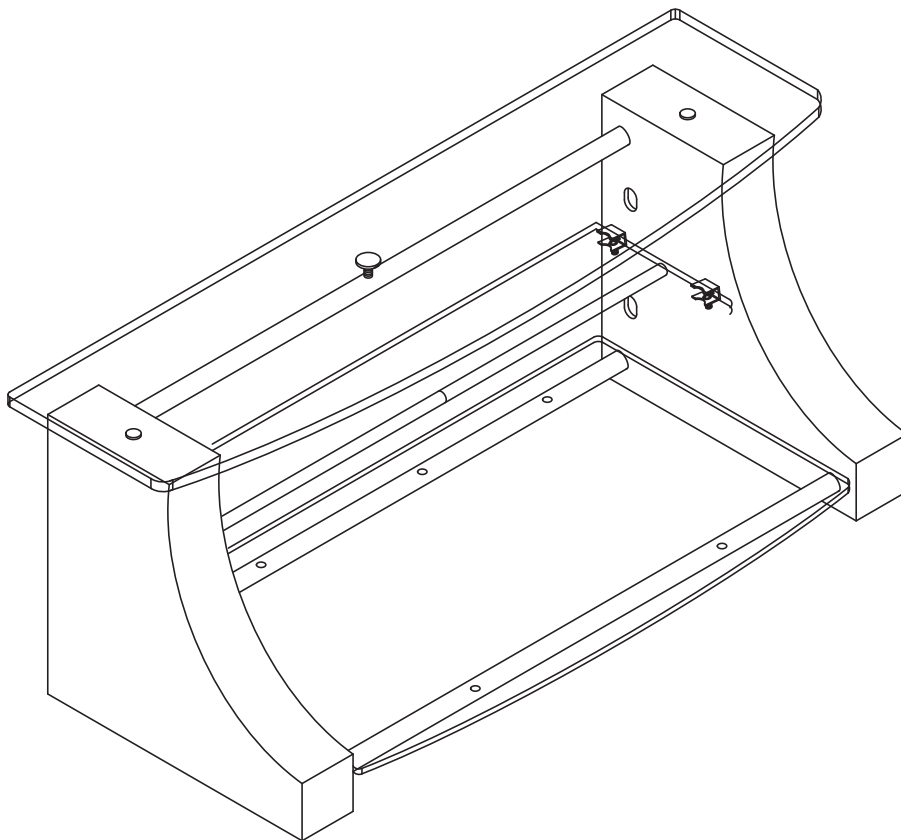




PVSC-4240 Audio Video System
ASSEMBLY INSTRUCTIONS



ITALIAN DESIGNED • A PRODUCT OF CHINA

Bell'O International Corp. will not be responsible for failure to assemble as directed or for the improper assembly, use or handling of this stand.

PATENT No. 491,748

© 2002 BELL'O INTERNATIONAL, LLC

AH-1_040708V2



THANK YOU FOR PURCHASING THIS BELL'O PRODUCT.

THE REAL HARDWOODS USED IN BELL'O FURNITURE ARE NATURALLY BEAUTIFUL.
SOME DIFFERENCES IN WOOD GRAIN ARE DESIRABLE AND EXPECTED.
PLEASE USE ONLY HIGH QUALITY WOOD FURNITURE POLISH TO CARE FOR THE WOOD
COMPONENTS OF YOUR STAND.

FOR YOUR SAFETY, PLEASE FOLLOW THESE PRECAUTIONS:



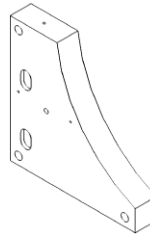
- ! ALWAYS REMOVE THE TV AND OTHER EQUIPMENT FROM THE FURNITURE PRIOR TO MOVING THE ASSEMBLED UNIT.
- ! BE CAREFUL WHEN MOVING THE ASSEMBLED FURNITURE AFTER THE SHELVES AND DOORS HAVE BEEN INSTALLED, AS THIS MAY CAUSE THE SHELVES AND OTHER ITEMS TO BECOME UNSECURED AND FALL.
- ! WHEN IN USE, THIS FURNITURE MUST BE PLACED ON A FLAT, SOLID AND LEVEL SURFACE.
- ! DO NOT LEAN ON THE TV WHEN IT IS ON THE TV STAND.
- ! DO NOT CLIMB OR STEP ON THE STAND.
- ! DO NOT BANG INTO OR PLACE YOUR OWN WEIGHT ON THE SHELVES.
- ! DO NOT PLACE ITEMS ON THE SHELVES WHICH EXCEED THE MAXIMUM WEIGHT LIMITS OF 100 LBS. FOR TOP SHELF AND 50 LBS. FOR EACH LOWER SHELF

PARTS LIST

PART DESCRIPTION

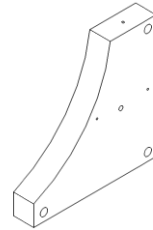
QUANTITY

A. RIGHT SIDE PANEL



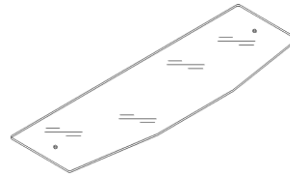
1 PC

B. LEFT SIDE PANEL



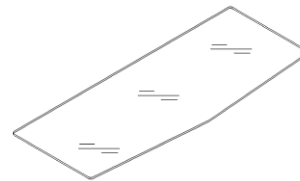
1 PC

C. TOP GLASS SHELF



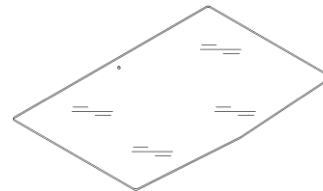
1 PC

D. MIDDLE GLASS SHELF



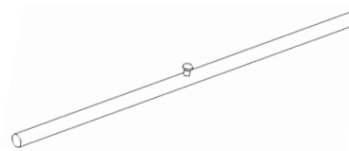
1 PC

E. BOTTOM GLASS SHELF



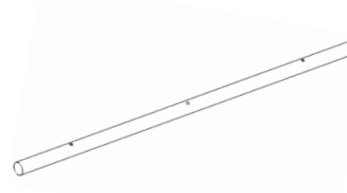
1 PC

F. TOP SHELF SUPPORT BAR



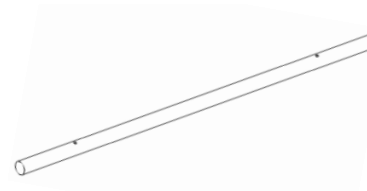
1 PC

G. BOTTOM SHELF REAR SUPPORT BAR



1 PC

H. BOTTOM SHELF FRONT SUPPORT BAR



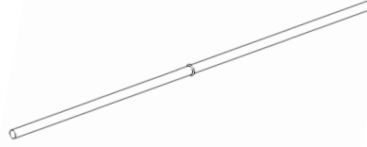
1 PC

PARTS LIST (CONTINUED)

PART DESCRIPTION

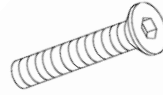
QUANTITY

I. MIDDLE SHELF SUPPORT BAR



1 PC

J. LONG SCREW (HEX HEAD)



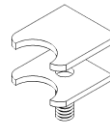
6 PCS

K. CLIP SCREW (PHILIPS HEAD)



4 PCS

L. GLASS SHELF SUPPORT CLIP



4 PCS

M. TOP GLASS RETAINER SCREW



2 PCS

N. GLASS RETAINER PIN



1 PC

O. SUCTION CUP



4 PCS

P. RUBBER GLASS PAD



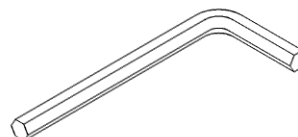
5 PCS

Q. WASHER



2 PCS

R. ALLEN WRENCH



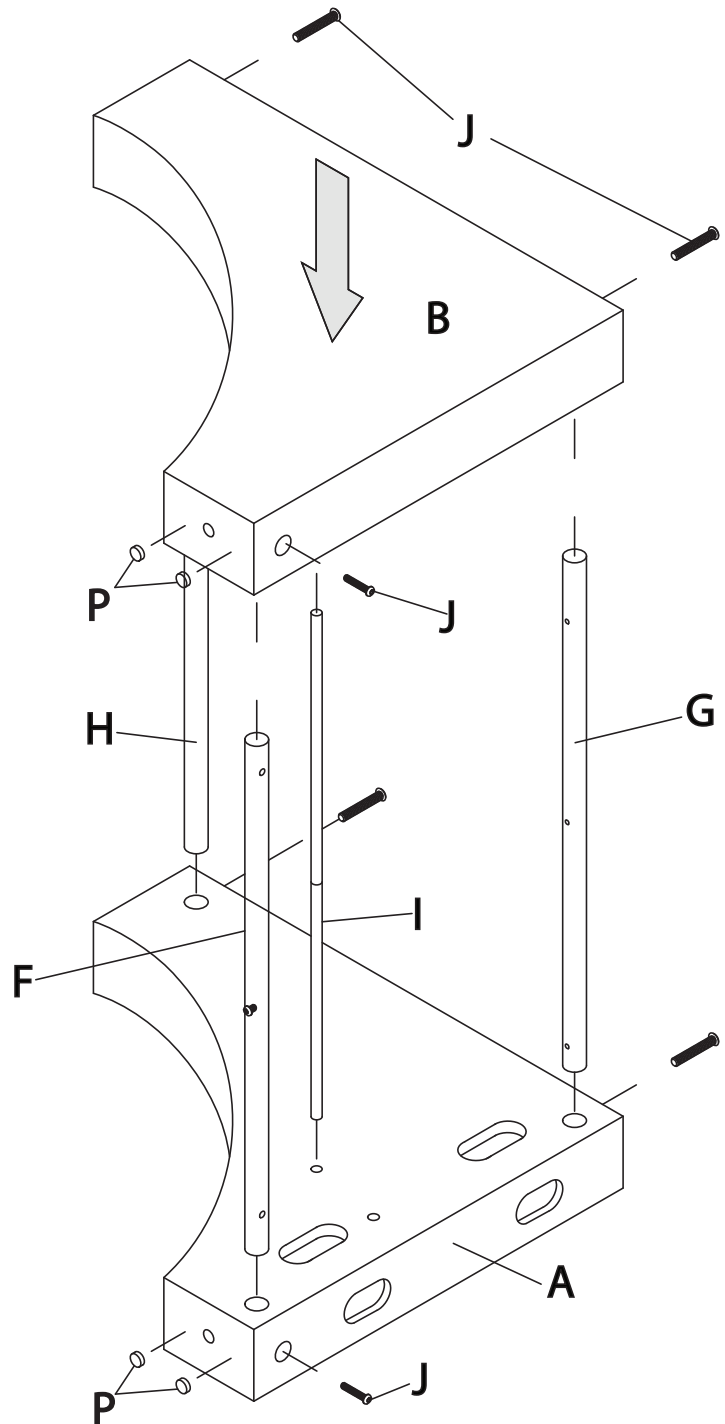
1 PC

ASSEMBLY INSTRUCTIONS

NOTE: ONE PERSON CAN ASSEMBLE THIS FURNITURE. TO AVOID DAMAGE DURING ASSEMBLY, IT SHOULD BE ASSEMBLED ON A SOFT SURFACE.

Fig. 1

- A. PLACE the right side panel (A) flat on the floor with the CMS® (Cable Management System) holes facing up as shown in Fig.1.
- B. INSERT one end of the top shelf crossbar (F) into the hole located on the inside top of the right side panel (A) as shown. Note: You can identify the top shelf crossbar (F) by the glass support post attached to the center of the bar.
- C. INSERT one end of the middle shelf crossbar (I) into the hole located on the inside center portion of the right side panel (A). Note: Crossbar (I) is the smaller diameter metal tube.
- D. INSERT one end of the bottom shelf rear crossbar (G) into the hole located on the inside rear lower portion of the right side panel (A). Note: Crossbar (G) is the larger diameter metal tube and has three pre-drilled holes located on one surface of the bar, and two threaded holes on the other.
- E. INSERT the end of the bottom shelf front crossbar (H) into the hole located on the inside front lower portion of the right side panel (A) as shown in Fig.1.
- F. ALIGN all of the pre-drilled threaded holes located on the three crossbars (F), (G) and (H) with the holes on the bottom of the right side panel (A) as shown in Fig.1. Insert three of the six supplied screws (J) through the holes on the bottom of panel (A) and into the pre-drilled threaded holes on the three crossbars. SECURE the screws using the supplied Allen wrench. **NOTE: DO NOT FULLY TIGHTEN THE SCREWS AT THIS POINT.**
- G. CAREFULLY PLACE the left side panel (B) onto the exposed ends of the four crossbars and INSERT the three remaining screws (J) through the holes on the bottom of left panel (B), and into the remaining pre-drilled threaded holes in the crossbars. NOW GO BACK AND TIGHTEN ALL 6 SCREWS SECURELY USING THE SUPPLIED ALLEN WRENCH.
- H. APPLY four flat rubber pads (P) to the two wood side panels (A) and (B) where indicated in Fig. 1.



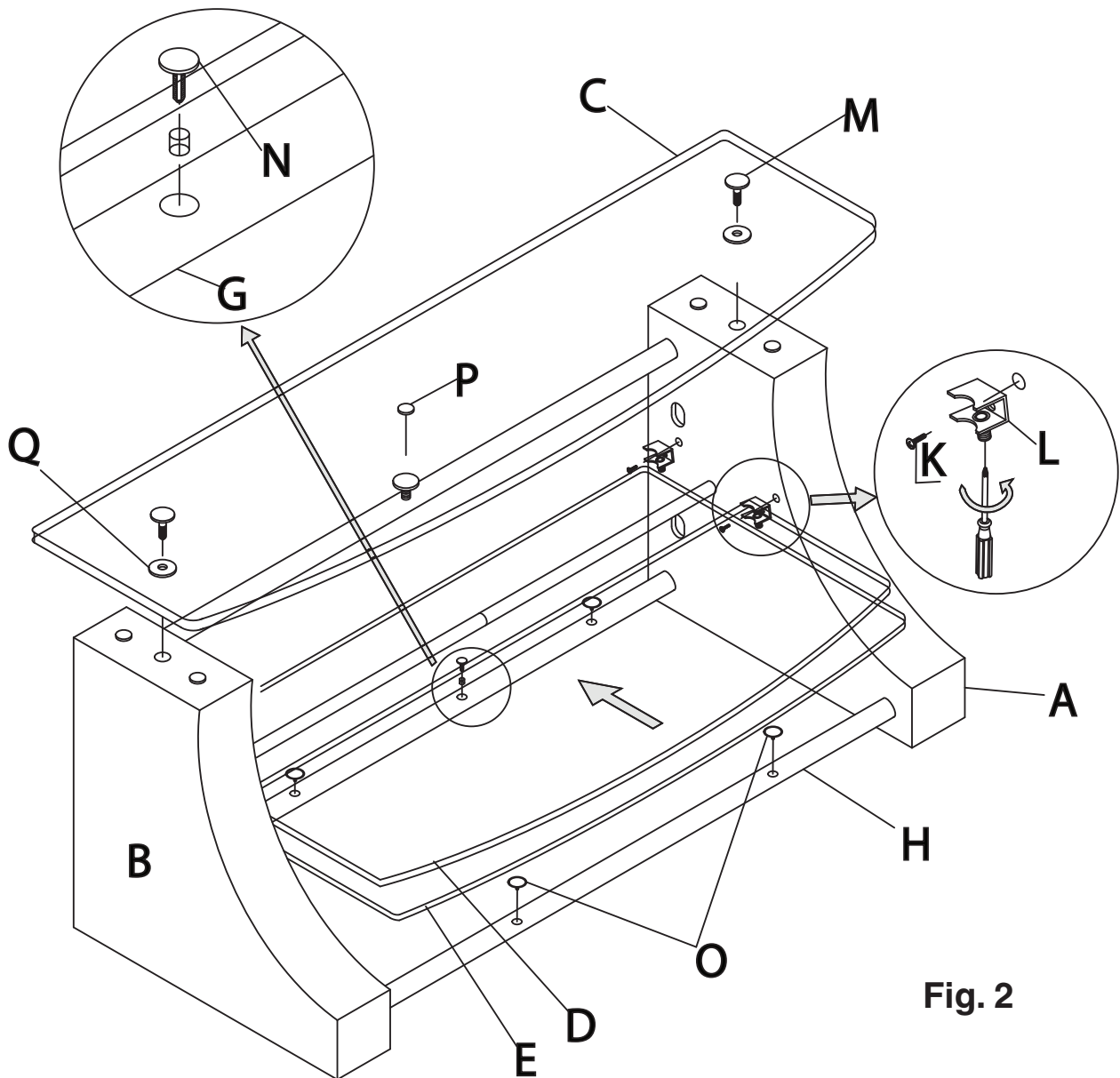


Fig. 2

I. CAREFULLY stand the assembled unit upright so that the top shelf crossbar (F) with the glass support post is facing upward as shown in Fig.2, and position the unit at the location it will occupy in the room when fully assembled and in use. Apply a flat rubber pad (P) to the top of the top glass shelf support post as shown.

NOTE: The table is facing forward when the CMS® (Cable Management System) holes are located towards the rear of the unit.

J. INSERT two middle shelf clips into the holes located on the inside center of each side panel (A) and (B) with the glass set screw facing downwards, and SECURE them with screws (K).

K. INSERT two rubber suction cups (O) into the holes located towards the outer edges of the bottom shelf crossbars (F) and (G).

L. From the front of the table CAREFULLY PLACE the large bottom glass shelf (E) onto the bottom shelf crossbars so that the hole in the back of the shelf is aligned with the hole in the center of rear bottom crossbar, (G) and GENTLY PRESS DOWN on the shelf to make a seal with the suction cups. NOTE: The suction cups are used to help keep the glass shelf in place. Lift up on one edge of the suction cup top to release the seal. SECURE the shelf to the crossbar using the glass shelf retainer pin (N), as shown in Fig.2.

M. From the front of the table, CAREFULLY SLIDE the middle glass shelf (D) through the glass shelf clips (L) and ALIGN the outer edges of the glass shelf with the front of the table. TIGHTEN the glass set screw to keep the shelf in place. DO NOT OVERTIGHTEN.

N. CAREFULLY position and place the top glass shelf (C) onto the top of the side wood panels with the curved shelf edge facing the front of the unit as shown in Fig. 2. Align the two holes in the top glass shelf with the threaded inserts located in the top of the side panels (A) and (B). Insert the two supplied threaded metal glass retainer screws (M) through the washers (Q) and the glass shelf holes, and into the threaded inserts. HAND TIGHTEN the glass retainer screws (M) so that the top glass is secure. DO NOT OVERTIGHTEN.



Warranty

One (1) Year Limited Warranty

All Bell'O International products are warranted, with the exception of glass, to the original purchaser at the time of purchase and for a period of one (1) year thereafter. Glass is warranted to the original purchaser at the time of purchase and for a period of thirty (30) days thereafter. Warranty is only valid in the United States of America.

In order to provide you with timely assistance, please thoroughly inspect your furniture for missing or defective parts immediately after opening the carton. To receive replacement or missing part(s) under this warranty, go to our website at www.bello.com or call our **Customer Service Department at 1-888-235-7646**. Please have the model number and part number(s) for reference. You will also need your sales receipt or other proof of purchase. Replacement part(s) will be shipped to you at no charge with Bell'O International assuming all shipping and handling expense.

We warrant to you, the original purchaser, that our furniture and all of its parts and components are free of defects in material or workmanship. "Defects", as used in this warranty, is defined as any imperfections that impair the use of the furniture or product.

Our warranty is expressly limited to the replacement of furniture parts and components. For one (1) year after the date of purchase, Bell'O International will replace any part described on the enclosed furniture parts list that is defective in material or workmanship.

This warranty applies under conditions of normal use. Our furniture products are not intended for outdoor use. The warranty does not cover: 1) defects caused by improper assembly or disassembly; 2) defects caused by shipping, claims for damage during transit to you should be placed immediately by you to the transportation company; 3) defects occurring after purchase due to product modification, intentional damage, accident, misuse, abuse, negligence or exposure to the elements; 4) cosmetic damage and 5) labor or assembly costs.

There are no warranties, express or implied, including without limitation merchantability or fitness for particular use, except as (I) contained herein or (II) required by applicable law in the state whose law governs (which shall be New Jersey absent controlling law imposing the law of another state in lieu thereof as governing law). All warranties of whatsoever derivation shall be limited to the term set forth above, unless otherwise required by applicable law.

Manufacturer's employees or representatives' oral or other written statements do not constitute warranties, shall not be relied upon by Buyer, and are not a part of the contract for sale or this limited warranty.

Except as provided herein, Bell'O International shall have no liability or responsibility to the purchaser or any other person or entity with respect to any liability, loss or damage caused directly or indirectly by use of the product, including, but not limited to, any incidental or consequential damages. Some states do not allow limitation on how long an implied warranty can last or the exclusion of limitation of incidental or consequential damages, so the above limitation and exclusion may not apply to you.

This warranty gives you specific legal rights. You may also have other rights, which vary from state to state.

BELL'O INTERNATIONAL CORPORATION, 711 Ginesi Drive, Morganville, NJ 07751-1235
Phone: (732) 972-1333 Fax: (732) 536-6482 Web: www.bello.com E-mail: sales@bello.com