

SILHOUETTE 33” DUAL LEVEL KITCHEN SINK

- Americast brand engineered material
- Dual level design
- Self-rimming or undercounter installation
- Silicone sealant supplied
- Available in 1, 3, 4, or 5 faucet hole configuration

Self-Rimming:

- 7179.001** Center hole only
- 7179.803** 3 hole
- 7179.804** 4 hole
- 7179.805** 5 hole

Undercounter Installation:

- 791326-100** Mounting Kit (consists of cut-out templates and mounting kits)

NOTE: For undercounter installation order self-rimming model with desired hole punchings along with 791326-100 Mounting Kit.

Nominal Dimensions: 838 x 559 x 241mm
(33" x 22" x 9-1/2")

Bowl sizes:

Right Hand: 191mm (7-1/2") wide, 413mm (16-1/4") front to back 178mm (7") deep
Left Hand: 527mm (20-3/4") wide, 476mm (18-3/4") front to back 229mm (9") deep



Self-Rimming model (faucet & soap dispenser not included)



Undercounter Installation (faucet not included)

To Be Specified

- Color:
- Faucet*:
- Faucet Finish:
- Basket Strainer: 4331.013
- Soap Dispenser: 4503.115, Color:
- Traps:

See Pgs. KSS-05B & 05C for Colors and information on the following items:

- Coated Wire Utility Basket: 7346.100, Color:
- Wood Cutting Board: 9000.250
- Colander for Cutting Board: 8102.100, Color:
- Large Colander: 8103.100, Color:
- Deep Web Colander: 8105.100, Color:
- Shallow Web Colander: 8104.100, Color:
- Web Cover: 8106.100, Color:

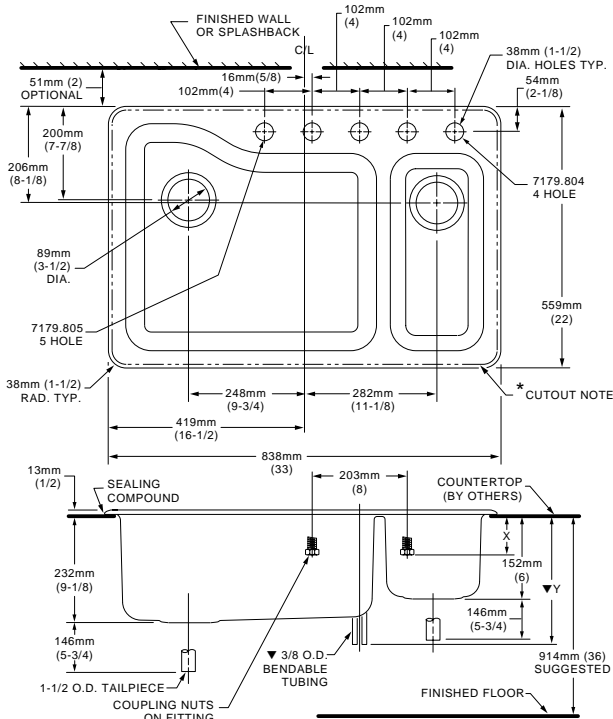
Compliance Certifications -

Meets or Exceeds the Following Specifications:

- ASME A112.19.4M for Americast Plumbing Fixtures
- ASTM E162 for Flammability
- NFPA 258 for Smoke Density

* See faucet section for additional models available

7179.803/804/805



FAUCET	7179.803	7179.804	X	Y
CERAMIX	2021.700	2021.741	—	327mm(12-7/8)
RELIANT	4205.241	4205.217	—	254mm(10)
HERITAGE TOP MOUNT	6270.000	6279.000	44mm(1-3/4)	—
AMARILIS BOTTOM MOUNT	7270.SER.	7271.SER.	95mm(3-3/4)	—

NOTES:

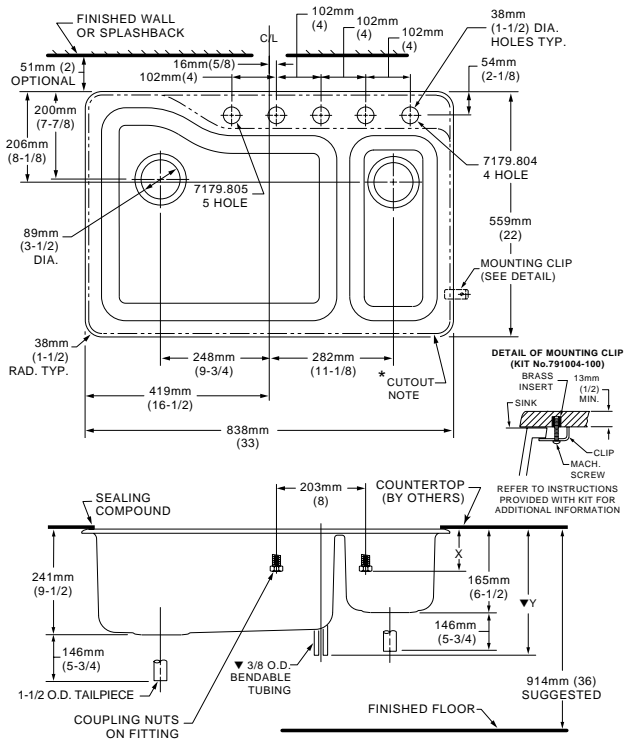
* **SELF-RIMMING:** COUNTERTOP CUTOUT 806 x 527mm WITH 25mm RADIUS (31-3/4 X 20-3/4 WITH 1" RAD.) AT CORNERS.

FITTINGS NOT INCLUDED AND MUST BE ORDERED SEPARATELY. PROVIDE SUITABLE REINFORCEMENT FOR ALL WALL AND COUNTERTOP SUPPORTS.

IMPORTANT: Dimensions of fixtures are nominal and may vary within the range of tolerances established by ANSI Standard A112.19.4

These measurements are subject to change or cancellation. No responsibility is assumed for use of superseded or voided leaflet.

Undercounter Mount



NOTES:

* TEMPLATE PROVIDED WITH MOUNTING KIT 791326-100 FOR EXPOSED FAUCET DECK OR UNDERCOUNTER FAUCET DECK COUNTERTOP CUTOUT VARIATIONS FITTINGS AND UNDERCOUNTER MOUNTING KIT NOT INCLUDED AND MUST BE ORDERED SEPARATELY. PROVIDE SUITABLE REINFORCEMENT FOR ALL WALL AND COUNTERTOP SUPPORTS.

IMPORTANT: Dimensions of fixtures are nominal and may vary within the range of tolerances established by ANSI Standard A112.19.4 These measurements are subject to change or cancellation. No responsibility is assumed for use of superseded or voided leaflet.

SILHOUETTE 33" DUAL LEVEL KITCHEN SINK

- Americast brand engineered material
- Dual level design
- Tile edge installation
- Silicone sealant supplied
- Available in 1, 3, 4, or 5 faucet hole configuration

Tile Edge:

- 7179.011** Center hole only
- 7179.813** 3 hole
- 7179.814** 4 hole
- 7179.815** 5 hole

Nominal Dimensions: 838 x 559 x 241mm
(33" x 22" x 9-1/2")

Bowl sizes:

Right Hand: 191mm (7-1/2") wide, 413mm
(16-1/4") front to back 178mm (7") deep
Left Hand: 527mm (20-3/4") wide, 476mm
(18-3/4") front to back 229mm (9") deep

Compliance Certifications -

Meets or Exceeds the Following Specifications:

- ASME A112.19.4M for Americast Plumbing Fixtures
- ASTM E162 for Flammability
- NFPA 258 for Smoke Density



To Be Specified

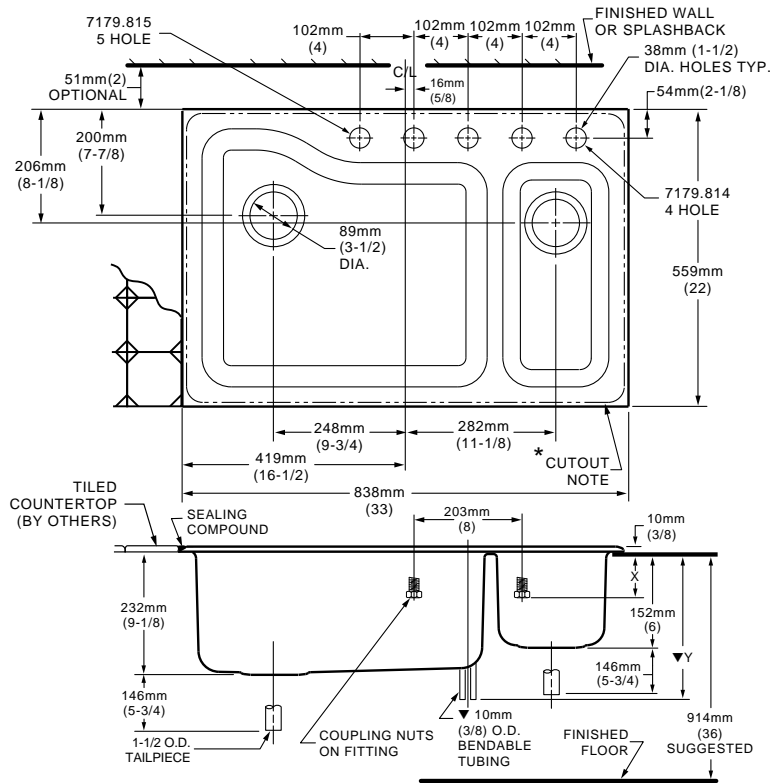
- Color:
- Faucet*:
- Faucet Finish:
- Basket Strainer: 4331.013
- Soap Dispenser: 4503.115, Color:
- Traps:

See Pgs. KSS-05B & 05C for Colors and information on the following items:

- Coated Wire Utility Basket: 7346.100, Color:
- Wood Cutting Board: 9000.250
- Colander for Cutting Board: 8102.100, Color:
- Large Colander: 8103.100, Color:
- Deep Web Colander: 8105.100, Color:
- Shallow Web Colander: 8104.100, Color:
- Web Cover: 8106.100, Color:

* See faucet section for additional models available

7179.813/814/815



FAUCET	7179.813	7179.814	X	Y▼
CERAMIX	2021.700	2021.741	—	327mm(12-7/8)
RELIANT	4205.241	4205.217	—	254mm(10)
HERITAGE	6270.000	6279.000	44mm(1-3/4)	—
AMARILIS	7270.SER.	7271.SER.	95mm(3-3/4)	—

NOTES:
 * COUNTERTOP CUTOUT 806mm X 527mm WITH 25mm RADIUS (31-3/4 X 20-3/4 WITH 1" RADIUS) AT CORNERS.
 FITTINGS NOT INCLUDED AND MUST BE ORDERED SEPARATELY.
 PROVIDE SUITABLE REINFORCEMENT FOR ALL WALL AND COUNTERTOP SUPPORTS.
 IMPORTANT: Dimensions of fixtures are nominal and may vary within the range of tolerances established by ANSI Standard A112.19.4
 These measurements are subject to change or cancellation. No responsibility is assumed for use of superseded or voided leaflet.