



**BARRIER FREE**

**SILHOUETTE 33” SHALLOW DOUBLE BOWL  
KITCHEN SINK**

- Americast® brand engineered material
- Double bowl design
- Choice of shallow bowl sink with or without ADA package
- Self-rimming installation
- Silicone sealant supplied
- Available in 1, 3, 4, or 5 faucet hole configuration (except in ADA package)

**Self-Rimming:**

- 7163.001** Center hole only
- 7163.803** 3 hole
- 7163.804** 4 hole
- 7163.805** 5 hole

**Self-Rimming with ADA Package:**

- 7163.202** Chrome w/4318.002 Remote Drain & 4531 Series Faucet
- 7163.299** Polished Brass w/4319.099 Remote Drain & 4531 Series Faucet

Nominal Dimensions: 838 x 559 x 152mm  
(33" x 22" x 6")

**Bowl sizes:**

Right Hand: 359mm (14-1/8") wide, 413mm (16-1/4") front to back 152mm (6") deep  
Left Hand: 359mm (14-1/8") wide, 476mm (18-3/4") front to back 152mm (6") deep

**Undercounter Installation:**

- 791326-100** Mounting Kit (consists of cut-out template and mounting kit)



Shown with ADA kitchen faucet with the chrome remote drain (included in 7163.202)

NOTE: For undercounter installation, order self-rimming model nos. 7163.001, 7163.803, 7163.804, 7163.805 with desired hole punchings with 791326-100 Mounting Kit.

**Compliance Certifications -**

**Meets or Exceeds the Following Specifications:**

- ASME A112.19.4M for Americast Plumbing Fixtures
- ASTM E162 for Flammability
- NFPA 258 for Smoke Density

See reverse side for roughing-in dimensions



● When installed so top of sink is 876mm (34-1/2") from finished floor.  
**MEETS THE AMERICAN DISABILITIES ACT GUIDELINES AND ANSI A117.1 ACCESSIBLE AND USEABLE BUILDINGS AND FACILITIES - CHECK LOCAL CODES.**

**To Be Specified**

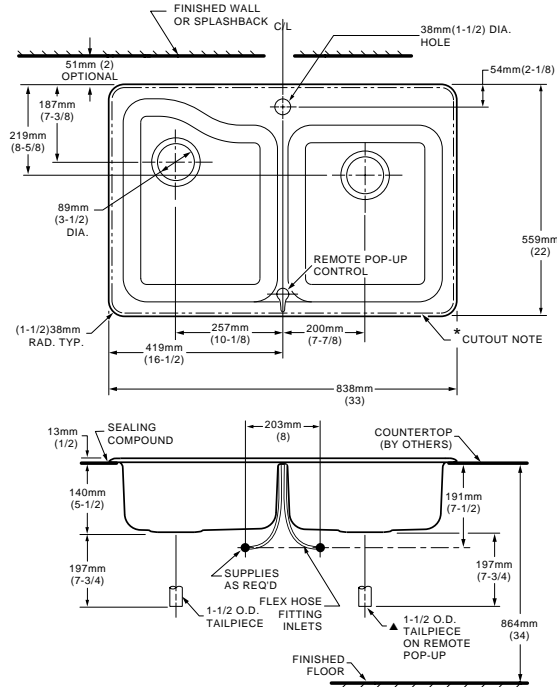
- Color:
- Faucet\*:
- ADA Package:
  - Chrome Remote Drain
  - Polished Brass Remote Drain
- Faucet Finish:
- Basket Strainer: 4331.013
- Soap Dispenser: 4503.115, Color:
- Traps:

See Pgs. KSS-05B & 05C for Colors and information on the following items:

- Coated Wire Utility Basket: 7346.100, Color:
- Wood Cutting Board: 9000.250
- Colander for Cutting Board: 8102.100, Color:
- Large Colander: 8103.100, Color:
- Deep Web Colander: 8105.100, Color:
- Shallow Web Colander: 8104.100, Color:
- Web Cover: 8106.100, Color:

\* See faucet section for additional models available

7163.202/7163.299 ADA Package

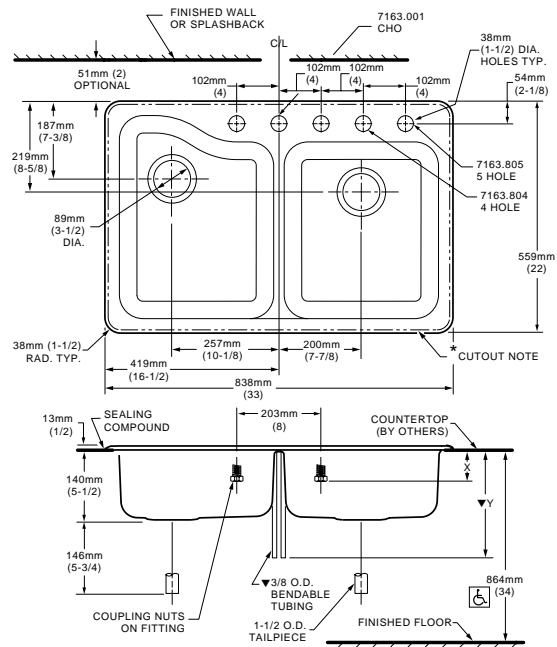


NOTES:

- ▲ 4318.002/4319.099 REMOTE POP-UP MAY BE INSTALLED ON LEFT IF REQUIRED. COUNTERTOP CUTOUT 527 X 806mm WITH 25mm (20-3/4 X 31-3/4 WITH 1) RADIUS AT CORNERS.
- \* SUPPLIES NOT INCLUDED AND MUST BE ORDERED SEPARATELY. PROVIDE SUITABLE REINFORCEMENT FOR WALL & COUNTERTOP SUPPORT.

IMPORTANT: Dimensions of fixtures are nominal and may vary within the range of tolerances established by ANSI Standard A112.19.4  
These measurements are subject to change or cancellation. No responsibility is assumed for use of superseded or voided leaflet.

7163. Series without ADA Package



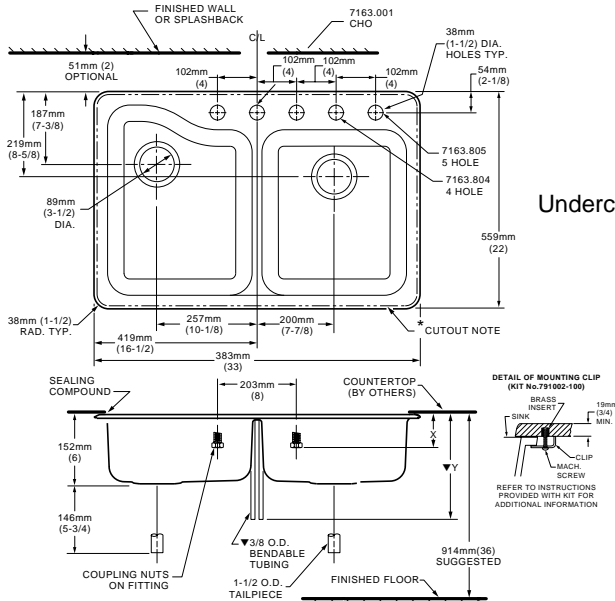
FAUCET	7163.803	7163.804	X	Y
CERAMIX	2021.700	2021.741	—	327mm(12-7/8)
RELIANT	4205.241	4205.217	—	254mm(10)
HERITAGE TOP MOUNT	6270.000	6279.000	44mm(1-3/4)	—
AMARILIS BOTTOM MOUNT	7270.SER.	7271.SER.	95mm(3-3/4)	—

NOTES:

- \* COUNTERTOP CUTOUT 527 X 806mm WITH 25mm (20-3/4 X 31-3/4 WITH 1) RADIUS AT CORNERS.
- SUPPLIES NOT INCLUDED AND MUST BE ORDERED SEPARATELY. PROVIDE SUITABLE REINFORCEMENT FOR WALL & COUNTERTOP SUPPORTS.

IMPORTANT: Dimensions of fixtures are nominal and may vary within the range of tolerances established by ANSI Standard A112.19.4  
These measurements are subject to change or cancellation. No responsibility is assumed for use of superseded or voided leaflet.

Undercounter Mount



NOTES:

- \* TEMPLATE PROVIDED WITH MOUNTING KIT 791326-100 FOR UNDER-COUNTER FAUCET DECK CUTOUT VARIATIONS.
- SUPPLIES NOT INCLUDED AND MUST BE ORDERED SEPARATELY. PROVIDE SUITABLE REINFORCEMENT FOR WALL & COUNTERTOP SUPPORTS.

IMPORTANT: Dimensions of fixtures are nominal and may vary within the range of tolerances established by ANSI Standard A112.19.4  
These measurements are subject to change or cancellation. No responsibility is assumed for use of superseded or voided leaflet.

FAUCET	7163.803	7163.804	X	Y
CERAMIX	2021.700	2021.741	—	327mm(12-7/8)
RELIANT	4205.241	4205.217	—	254mm(10)
HERITAGE TOP MOUNT	6270.000	6279.000	44mm(1-3/4)	—
AMARILIS BOTTOM MOUNT	7270.SER.	7271.SER.	95mm(3-3/4)	—