

CHAMPION® ELONGATED TOILET

2018.212

- Vitreous china
- Low-consumption (6.0 Lpf/1.6 gpf)
- 3" non-adjustable, flapper-free flush valve
- Elongated siphon action jetted bowl
- 2-3/8" fully-glazed trapway
- Speed Connect™ tank/bowl coupling system
- Sweeping pier on bowl
- 100% factory flush tested
- 2 bolt caps
- 10 year warranty

3121.016 Bowl

4260.016 Tank

Nominal Dimensions:

30-3/8" x 19" x 32-5/8" (772 x 483 x 829mm)

Fixture only, seat and supply by others

Alternate Tank Configurations Available:

- 4260.500** Tank complete w/Aquaguard Liner
- 4260.600** Tank complete w/Cover Locking Device
- 4260.800** Tank complete w/Trip Lever Located on Right Side
- 4260.900** Tank complete w/Cover Locking Device and w/Trip Lever Located on Right Side

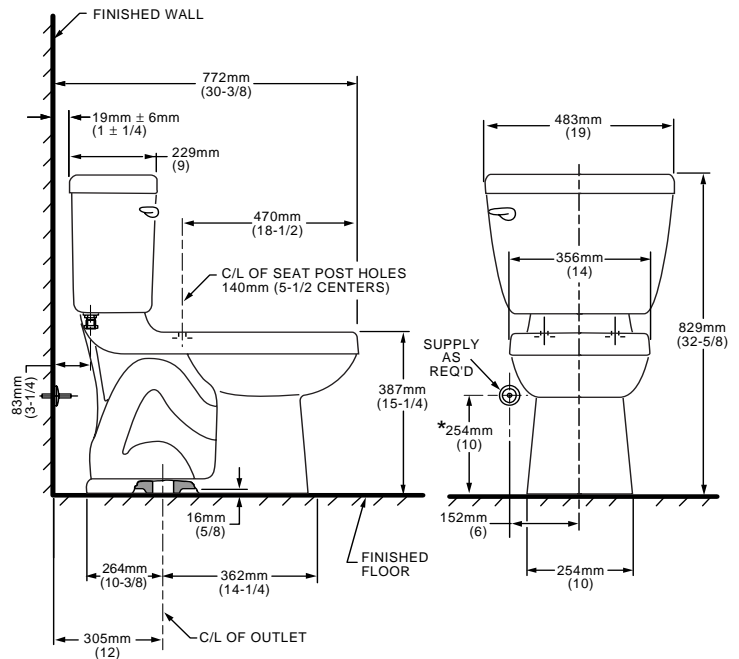
Compliance Certifications -

Meets or Exceeds the Following Specifications:

- ASME A112.19.2M (and 19.6M) for Vitreous China Fixtures - includes Flush Performance, Ball Pass Diameter, Trap Seal Depth and all Dimensions
- Los Angeles Department of Water and Power Supplementary Purchase Specification for Non-Adjustability - July, 2003 revision

To Be Specified

- Color:**
 - White Bone Silver
 - Fawn Beige Linen Black
- Design matched Seat: #5280.016**
- Alternate Seats:**
 - Champion® Slow Close Elongated #5325.010
 - Rise & Shine Elongated #5324.019
 - Rise & Shine Elongated-Open Front #5325.024
 - Laurel Elongated #5311.012
- Supply with stop:**



NOTES:

THIS TOILET IS DESIGNED TO ROUGH-IN AT A MINIMUM DIMENSION OF 305MM (12") FROM FINISHED WALL TO C/L OF OUTLET.

SUPPLY NOT INCLUDED WITH FIXTURE AND MUST BE ORDERED SEPARATELY.

* DIMENSION SHOWN FOR LOCATION OF SUPPLY IS SUGGESTED.

IMPORTANT: Dimensions of fixtures are nominal and may vary within the range of tolerances established by ANSI Standard A112.19.2.

These measurements are subject to change or cancellation. No responsibility is assumed for use of superseded or voided pages.

