



**BARRIER FREE**

**INSTANTO™ ELONGATED 3.5 GPF TOILET**

- Vitreous china
- Wall-mounted elongated bowl
- Blowout flush action
- Fully-glazed 2-1/2" Ballpass trapway
- 1-1/2" inlet spud
- 100% factory flush tested

**2512.010**

Top spud

**2511.012**

Back spud

**2513.018**

Back spud with Integral Seat

Nominal Dimensions:

660x 356 x 457mm

(26" x 14" x 15")

Recommended working pressure--between  
25 psi at valve when flushing and 80 psi static

Fixture only, less seat and bolt caps

**Compliance Certifications -**

**Meets or Exceeds the Following Specifications:**

- ASME A112.19.2M (and 19.6M) for Vitreous China Fixtures - includes Flush Performance, Ball Pass Diameter, Trap Seal Depth and all Dimensions



**NOTES:** Roughing-in information shown on reverse side of page.

Blowout water closets are exempt from the 1.6 gallon per flush requirements of the National Energy Policy Act. However, some state and local codes do not allow the use of 3.5 gallons per flush toilets. Check local codes.

To Be Specified

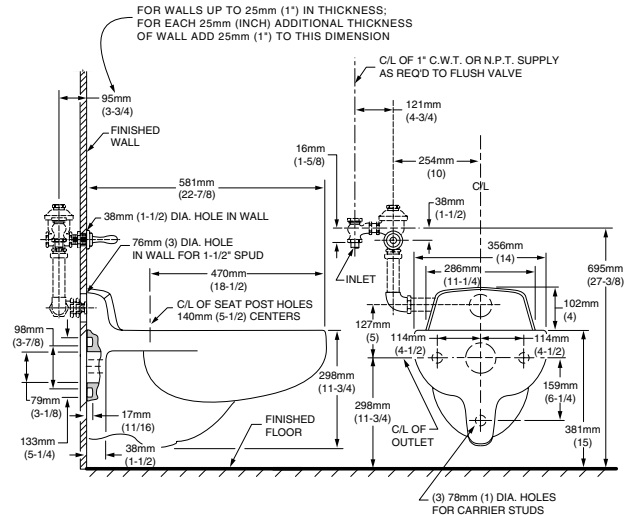
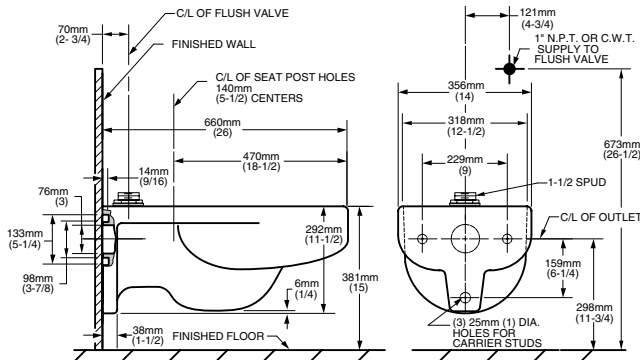
- Color:  White
- Seat: Olsonite #95 open front seat less cover
- Seat: Church #9500C open front seat less cover
- Seat: Pressalit seats for American Standard, open front seat with/without cover (thermoset compound material). See page TBU-002 through TBU-005.
- Alternative Seat:
- Flush Valve: Sloan Royal #110-3 (top spud)  
Sloan Royal #144-3 (back spud)
- Alternate Flush Valve:
- Carrier Fitting (by others):



● When installed so top of seat is 432 to 483mm (17" to 19") from the finished floor.  
**MEETS THE AMERICAN DISABILITIES ACT GUIDELINES AND ANSI A117.1 REQUIREMENTS FOR ACCESSIBLE AND USEABLE BUILDING FACILITIES-CHECK LOCAL CODES.**

2512.010

2511.012



**NOTES:**

WASTE OUTLET SEAL RING MUST BE NEOPRENE OR GRAPHITE-FELT (WAX RING NOT RECOMMENDED). TO COMPLY WITH AREA CODE GOVERNING THE HEIGHT OF VACUUM BREAKER ON FLUSH VALVE, THE PLUMBER MUST VERIFY DIMENSIONS SHOWN FOR SUPPLY ROUGHING.

SUGGEST 1/16" CLEARANCE BETWEEN FACE OF WALL AND BACK OF BOWL.

METHOD AND MEANS OF SUPPORT TO BE FIGURED AND FURNISHED BY OTHERS.

FLUSH VALVE NOT INCLUDED WITH FIXTURE AND MUST BE ORDERED SEPARATELY.

PLUMBER NOTE: PROVIDE SUITABLE REINFORCEMENT FOR ALL SUPPORTS.

IMPORTANT: Dimensions of fixtures are nominal and may vary within the range of tolerances established by ANSI Standard A112.19.2.

These measurements are subject to change or cancellation. No responsibility is assumed for use of superseded or voided pages.