

COLONY™ ELONGATED TOILET

2399.012

- Vitreous china
- Low-consumption (6.0 Lpf/1.6 gpf)
- Elongated siphon action jetted bowl
- Fully glazed 2" trapway
- American Standard Aquameter™ Water Control
- Large 10" x 8" water surface area
- Color-matched trip lever
- Sanitary bar on bowl
- 2 bolt caps
- 100% factory flush tested

3344.017 Bowl

4392.016 Tank

Nominal Dimensions:

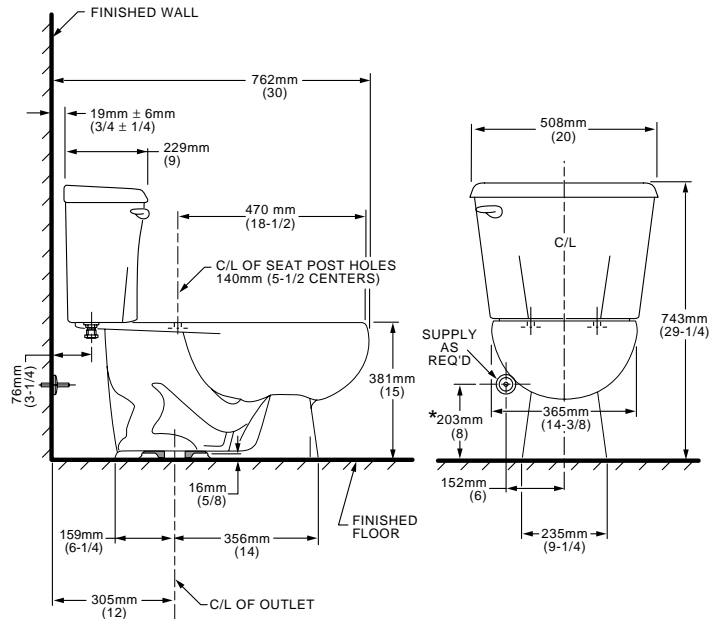
762 x 508 x 743mm (30" x 20" x 29-1/4")

Fixture only, seat and supply by others

Alternate Tank Configurations Available:

4392.500 Tank complete w/Aquaguard Liner

4392.800 Tank complete w/Trip Lever Located on Right Side



NOTES:

THIS COMBINATION IS DESIGNED TO ROUGH-IN AT A MINIMUM DIMENSION OF 305MM (12") FROM FINISHED WALL TO C/L OF OUTLET.

* DIMENSION SHOWN FOR LOCATION OF SUPPLY IS SUGGESTED.

SUPPLY NOT INCLUDED WITH FIXTURE AND MUST BE ORDERED SEPARATELY.

IMPORTANT: Dimensions of fixtures are nominal and may vary within the range of tolerance established by ANSI Standard A112.19.2

These measurements are subject to change or cancellation. No responsibility is assumed for use of superseded or voided pages.

Compliance Certifications -

Meets or Exceeds the Following Specifications:

- ASME A112.19.2M (and 19.6M) for Vitreous China Fixtures - includes Flush Performance, Ball Pass Diameter, Trap Seal Depth and all Dimensions

To Be Specified

- Color:
- Seat: American Standard #5324.019 "Rise and Shine" (with easy to clean lift-off hinge system) solid plastic closed front seat with cover. See pageTB-001.
- Seat: American Standard #5311.012 "Laurel" molded closed front seat with cover. See pageTB-001.
- Alternate Seat:
- Supply with stop:

COLONY™ ELONGATED 10"R TOILET

2399.010

- Vitreous china
- Low-consumption (6.0 Lpf/1.6 gpf)
- 10" roughing-in
- Elongated siphon action jetted bowl
- Fully glazed 2" trapway
- American Standard Aquameter™ Water Control
- Large 10" x 8" water surface area
- Color-matched trip lever
- Sanitary bar on bowl
- 2 bolt caps
- 100% factory flush tested

3344.017 Bowl

4310.016 Tank



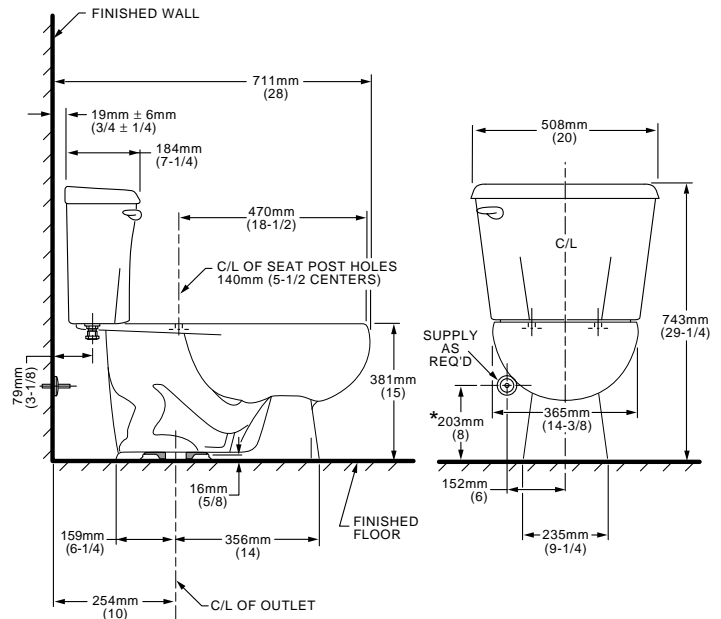
Nominal Dimensions:

711 x 508 x 743mm (28" x 20" x 29-1/4")

Fixture only, seat and supply by others

To Be Specified

- Color:
- Seat: American Standard #5324.019 "Rise and Shine" (with easy to clean lift-off hinge system) solid plastic closed front seat with cover. See pageTB-001.
- Seat: American Standard #5311.012 "Laurel" molded closed front seat with cover. See pageTB-001.
- Alternate Seat:
- Supply with stop:



NOTES:
 THIS COMBINATION IS DESIGNED TO ROUGH-IN AT A MINIMUM DIMENSION OF 254MM (10") FROM FINISHED WALL TO C/L OF OUTLET.
 * DIMENSION SHOWN FOR LOCATION OF SUPPLY IS SUGGESTED. SUPPLY NOT INCLUDED WITH FIXTURE AND MUST BE ORDERED SEPARATELY.
 IMPORTANT: Dimensions of fixtures are nominal and may vary within the range of tolerance established by ANSI Standard A112.19.2
 These measurements are subject to change or cancellation. No responsibility is assumed for use of superseded or voided pages.

Compliance Certifications -

Meets or Exceeds the Following Specifications:

- ASME A112.19.2M (and 19.6M) for Vitreous China Fixtures - includes Flush Performance, Ball Pass Diameter, Trap Seal Depth and all Dimensions

COLONY™ ELONGATED TOILET

2399.014

- Vitreous china
- Low-consumption (6.0 Lpf/1.6 gpf)
- 14" roughing-in
- Elongated siphon action jetted bowl
- Fully glazed 2" trapway
- American Standard Aquameter™ Water Control
- Large 10" x 8" water surface area
- Color-matched trip lever
- Sanitary bar on bowl
- 2 bolt caps
- 100% factory flush tested

3344.017 Bowl

4314.016 Tank



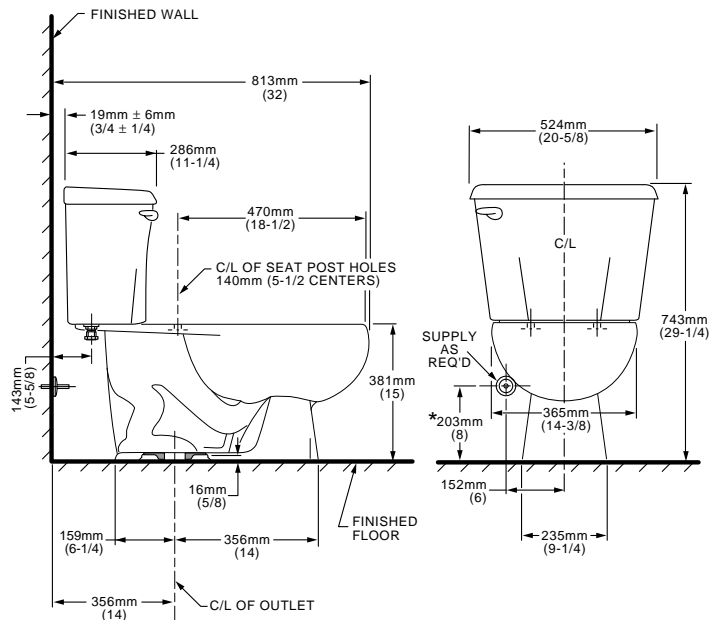
Nominal Dimensions:

813 x 524 x 743mm (32" x 20-5/8" x 29-1/4")

Fixture only, seat and supply by others

To Be Specified

- Color:**
- Seat:** American Standard #5324.019 "Rise and Shine" (with easy to clean lift-off hinge system) solid plastic closed front seat with cover. See pageTB-001.
- Seat:** American Standard #5311.012 "Laurel" molded closed front seat with cover. See pageTB-001.
- Alternate Seat:**
- Supply with stop:**



NOTES:

THIS COMBINATION IS DESIGNED TO ROUGH-IN AT A MINIMUM DIMENSION OF 356MM (14") FROM FINISHED WALL TO C/L OF OUTLET.

* DIMENSION SHOWN FOR LOCATION OF SUPPLY IS SUGGESTED.

SUPPLY NOT INCLUDED WITH FIXTURE AND MUST BE ORDERED SEPARATELY.

IMPORTANT: Dimensions of fixtures are nominal and may vary within the range of tolerance established by ANSI Standard A112.19.2

These measurements are subject to change or cancellation. No responsibility is assumed for use of superseded or voided pages.

Compliance Certifications -

Meets or Exceeds the Following Specifications:

- ASME A112.19.2M (and 19.6M) for Vitreous China Fixtures - includes Flush Performance, Ball Pass Diameter, Trap Seal Depth and all Dimensions