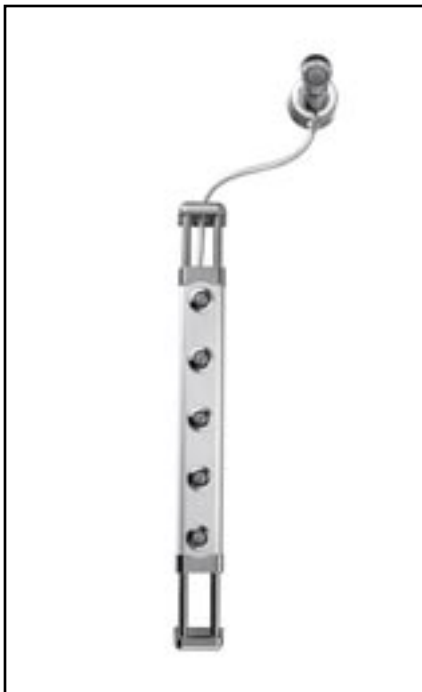


American Standard

VertiSpa™

Hydro-Massage Shower System

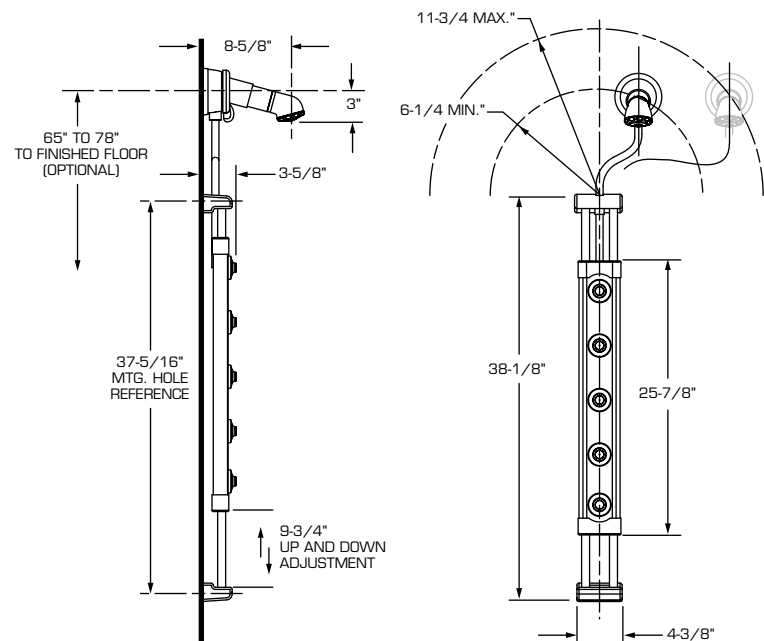


MODEL NUMBER:

☐ **6035 VertiSpa™ Hydro-massage Shower System**

Includes:

- Deluxe Shower Head
- Diverter valve
- Flexible hose
- Adjustable slide rails
- Five body massage jets



GENERAL DESCRIPTION:

Hydro-massage shower system includes: adjustable showerhead allows for 2.5 GPM 9.5 L/MIN maximum flow. Height adjustable vertical shower panel with 5 body shower jets. Integrated diverter diverts between adjustable showerhead and height adjustable vertical shower panel with 5 body jets. Vertical shower panel slides on two brass slide bars for easy height adjustment. Color coordinated connection hose allows for mounting flexibility of vertical shower panel. Universal pipe nipple allows for connection to shower supply elbow fitting. All mounting hardware included allowing for installation on common shower surface materials. Easy retrofit to existing shower and bath/shower installations.

PRODUCT FEATURES:

Adjustable Shower Head:

Adjusts from invigorating spray to drenching flow

Diverter Valve:

Adjusts from overhead shower to body jets

Flexible Hose:

Connects body shower jets to diverter valve

Adjustable Slide Rails:

Allows height adjustability of the body jets

Five Body Shower Jets:

Directionally adjustable and feature two styles:

- 2 ea. spray jets for a soothing body wash
- 3 ea. spiral jets for a massaging wash

Vertical unit houses body shower jets

SUGGESTED SPECIFICATION:

Shower system shall feature a deluxe, adjustable showerhead and 5 multi-directional body jets, including two spray jets and 3 spiral jets. The height of the body jets shall be adjustable. Unit shall also feature a diverter valve to switch between overhead shower and body jets. Unit can retrofit existing shower installation without changing any behind wall plumbing. Shower system shall be American Standard model # 6035.

American Standard

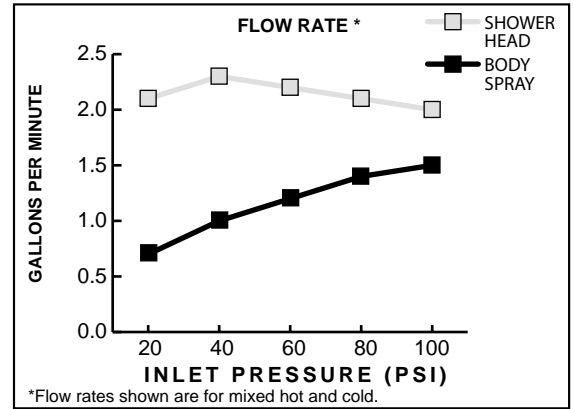
VertiSpa™

Hydro-Massage Shower System

CODES AND STANDARDS

Install as required to comply with local code requirements.

ASME A112.18.1
CSA B125



Product Number	Description	Finish
		Polished Chrome /Brushed Aluminum
6035	Hydro-massage Shower System. Contains shower head, diverter valve, flexible hose, adjustable slide bars, five body massage jets and vertical jet housing.	