

SILHOUETTE™ 38" DUAL LEVEL KITCHEN SINK

- Americast® brand engineered material
- Dual level double bowl design
- Acid-resisting glossy porcelain finish
- Top mount or undercounter installation
- Fits most standard 36" cabinet bases
- Silicone sealant supplied
- Available in 1, 3, 4, or 5 faucet hole configuration
- Customized hole punchings available (see page KS-61)

Top Mount/Undercounter:

- 7196.001** Center hole only
- 7196.803** 3 hole
- 7196.804** 4 hole
- 7196.805** 5 hole

Undercounter Installation Order:

- 791001-100** Mounting Kit (consists of cut-out templates and mounting kits)

Nominal Dimensions:

965 x 559 x 241mm
(38" x 22" x 9-1/2")

Bowl sizes:

Right Hand: 318mm (12-1/2") wide
413mm (16-1/4") front to back
178mm (7") deep
Left Hand: 527mm (20-3/4") wide
476mm (18-3/4") front to back
229mm (9") deep

**Compliance Certifications -
Meets or Exceeds the Following Specifications:**

- ASME A112.19.4M for Americast Plumbing Fixtures
- ASTM E162 for Flammability
- NFPA 258 for Smoke Density



Top mount model (faucet not included)

SEE REVERSE SIDE FOR ROUGHING-IN DIMENSIONS

To Be Specified:

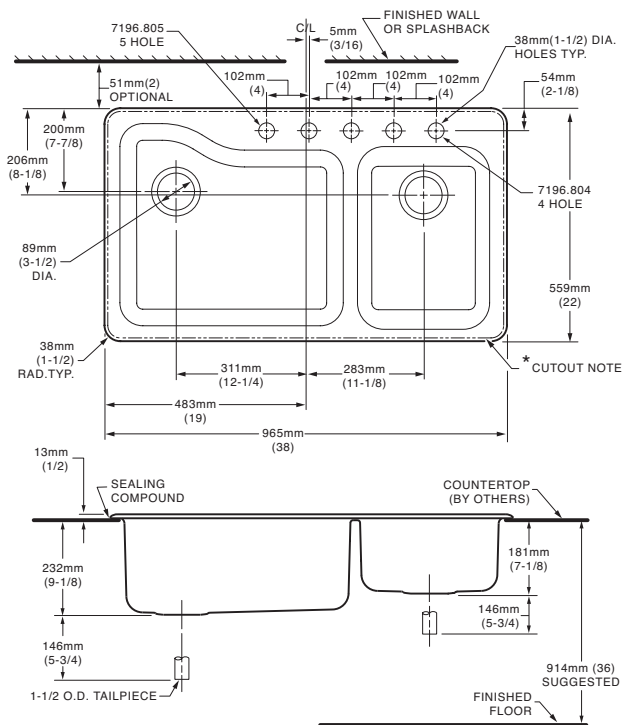
- Color:
- Faucet*:
- Faucet Finish:
- Basket Strainer: 4331.013
- Soap Dispenser: 4503.115, (specify color):
- Traps:

Optional Accessories:

- Coated Wire Utility Basket: 7346.100, Color:
- Wood Cutting Board: 9000.250
- Colander for Cutting Board: 8102.100, Color:
- Large Colander: 8103.100, Color:
- Deep Web Colander: 8105.100, Color:
- Shallow Web Colander: 104.100, Color:
- Web Cover: 8106.100, Color:
- Bottom Sink Rack (Left): 7407.100

* See faucet section for available models

7196.803/804/805 Top Mount



NOTES:

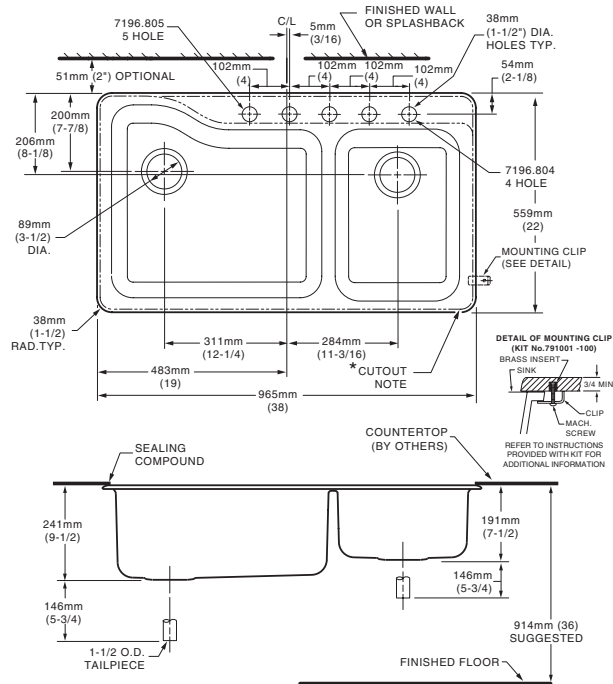
* COUNTERTOP CUTOUT 527mm x 933mm x 25mm RADIUS (20-3/4 X 36-3/4 WITH 1" RADIUS) AT CORNERS.

FITTINGS NOT INCLUDED AND MUST BE ORDERED SEPARATELY.

PROVIDE SUITABLE REINFORCEMENT FOR ALL WALL AND COUNTERTOP SUPPORTS.

IMPORTANT: Dimensions of fixtures are nominal and may vary within the range of tolerances established by ASME Standard A112.19.4 These measurements are subject to change or cancellation. No responsibility is assumed for use of superseded or voided leaflet.

Undercounter Mount



NOTES:

* TEMPLATE PROVIDED WITH MOUNTING KIT 791001-100 FOR EXPOSED FAUCET DECK OR UNDERCOUNTER FAUCET DECK COUNTERTOP CUTOUT VARIATIONS.

FITTINGS NOT INCLUDED AND MUST BE ORDERED SEPARATELY.

PROVIDE SUITABLE REINFORCEMENT FOR ALL WALL AND COUNTERTOP SUPPORTS.

IMPORTANT: Dimensions of fixtures are nominal and may vary within the range of tolerances established by ASME Standard A112.19.4 These measurements are subject to change or cancellation. No responsibility is assumed for use of superseded or voided leaflet.

