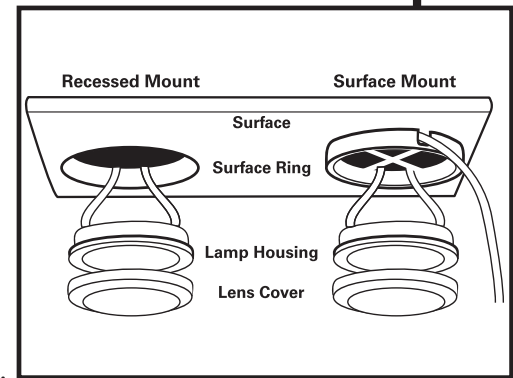


120 Volt Halogen Puck Light

Installation instructions for ALLVP Series

WARNING: These products may represent a possible shock or fire hazard if improperly installed or attached in any way. Products should be installed in accordance with the owners manual, current electrical codes and/or the current National Electric Code (NEC).

When installing a puck lighting system that includes multiple pucks, please note that 120V Halogen Puck Lights packaged in bulk (plain white box) will have a lead wire and tail wire so that each puck light can be "daisy-chained" using linkable extensions (part numbers ALLVPEX12 and ALLVPEX24). Puck lights packaged in retail packs (plastic clamshells) will include one puck that only has a lead wire and that puck must be used as the final light in the system.



SURFACE MOUNTING:

1. Locate desired position for the cabinet light.
2. Remove the lens cover from housing by rotating counter-clockwise.
3. If desired drill a hole the mounting surface and route wires through hole. Position the surface ring so the notch faces the rear of the cabinet.
4. Make sure there is no contact between the hot lamp, lampholder, or reflector, and any combustible material such as plastic or paper goods, or the wire insulation.
5. Mount surface ring and housing assembly with the three wood screws provided.
6. Replace lens cover by rotating clockwise.
7. Route unit's wire to "Wire Plug". CAUTION: Do not route wires and extension cords through walls. Use for external cabinet applications only.
8. When installing pucks inside entertainment centers, china cabinets or other similar portable furniture, do not hardwire this product without using the direct wire box ASL-BOX (sold separately).
9. Do not conceal power supply cord (or hardwire box) inside walls, ceilings, or floors.

RECESSED MOUNTING:

CAUTION! Risk of fire! Install as recessed only where top of cabinet is not enclosed.

1. Drill a 2-1/8" hole in the desired location.
2. Remove the lens cover from housing by rotating counter-clockwise.
3. Do not use surface ring for recessed applications.
4. Feed wires through hole and push light housing into hole. Housing stays in place with tension fit. Make sure there is no contact between the hot lamp, lampholder, or reflector, and the wire or any combustible material such as plastic or paper goods. Secure the light supply leads to avoid the likelihood of the leads contacting the cabinet light.
5. Replace lens cover by rotating clockwise.
6. Route unit's wire to "Wire Plug". CAUTION: Do not route wires and extension cords through walls. Use for external cabinet applications only.
7. Route unit's wire to "Wire Plug". CAUTION: Do not route wires and extension cords through walls. Use for external cabinet applications only.
8. When installing pucks inside entertainment centers, china cabinets or other similar portable furniture, do not hardwire this product without using the direct wire box ASL-BOX (sold separately).
9. Do not conceal power supply cord (or hardwire box) inside walls, ceilings, or floors.



120 Volt Halogen Puck Light

Installation instructions for ALLVP Series

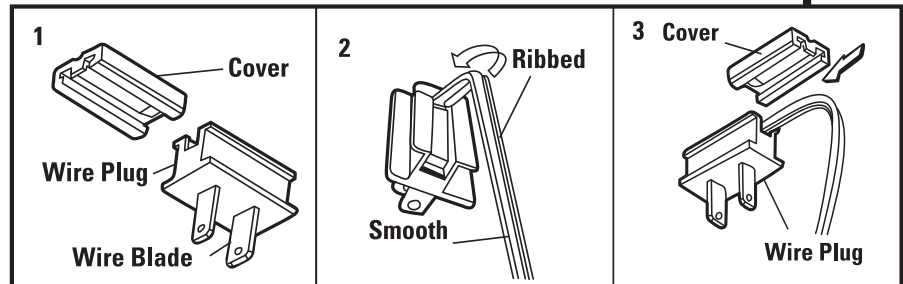
WARNING: These products may represent a possible shock or fire hazard if improperly installed or attached in any way. Products should be installed in accordance with the owners manual, current electrical codes and/or the current National Electric Code (NEC).

IMPORTANT SAFETY INSTRUCTIONS: PLEASE SAVE!

This fixture has a polarized plug (one blade is wider than the other) as a safety feature to reduce the risk of electric shock. This plug will fit in a polarized outlet only one way. If the plug does not fit fully in the outlet, reverse the plug. If it still does not fit, contact a qualified electrician. Never use with an extension cord unless the plug can be fully inserted. Do not alter the plug.

ADJUSTING POWER CORD LENGTH:

1. If wire plug cover is still attached to plug, slide cover off by pushing away from plug. (See illustration 1)
2. Insert trimmed end of cord into plug pocket, nearest the polarized blade (wide blade). Be sure that the ribbed side of cord goes over the right piercing point, and smooth side of cord goes over left piercing point. (See Illustration 2)
3. Slide plug cover back onto wire plug (Illustration 3), and route plug to nearest convenience outlet.



WARNING! To reduce the risk of fire, electric shock, exposure to excessive UV radiation, or injury to persons: LIGHTED LAMP IS HOT!

TO REPLACE BULB:

1. Unplug unit or turn roll switch to "off" position and allow lamp to cool before replacing bulb.
2. Use only 20 watt/120 volt maximum Halogen bulb type JCDGY8 or G-8 (ALLVP20B).
3. Twist lens cover counter-clockwise to remove.
4. Insert bulb.
5. Replace lens with a slight clockwise motion.

ADDITIONAL SAFETY MEASURES:

1. Bulb gets hot quickly. Contact only switch/plug when turning on.
2. Do not touch hot lens, lens holder or enclosure.
3. Do not remain in light if skin feels warm.
4. Do not look directly at lighted bulb.
5. Keep lamp away from curtains, draperies and similiar materials that may burn.
6. Do not operate lamp with a missing or damaged lens.

