








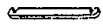

STYLE NO. DN9500

**SOUTHERN ENTERPRISES INC.**

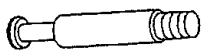
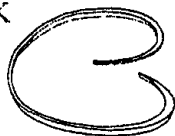



**INDIE'S KID'S CAR TRACK**

RELAX... If you can follow a few easy, step-by-step directions in order .YOU CAN ASSEMBLE THIS ITEM.

**TABLE AND CHAIR SET**

PARTS LIST			
(A) TABLE TOP	1PC	(E) CHAIR SIDE PANELS	4PCS
			
(B) UPPER LEGS PANEL W/ "A" AND "C" MARKS	1PC	(F) CHAIR SEAT PANELS	2PCS
			
(C) LOWER LEGS PANEL W/ "B" AND "D" MARKS	1PC	(G) CROSS BRACES	2PCS
			
(D) CHAIR BACK PANELS	2PCS		
			

**PLEASE FIND HARDWARE IN RED POLYBAG BEFORE DISCARDING PACKING MATERIAL.**

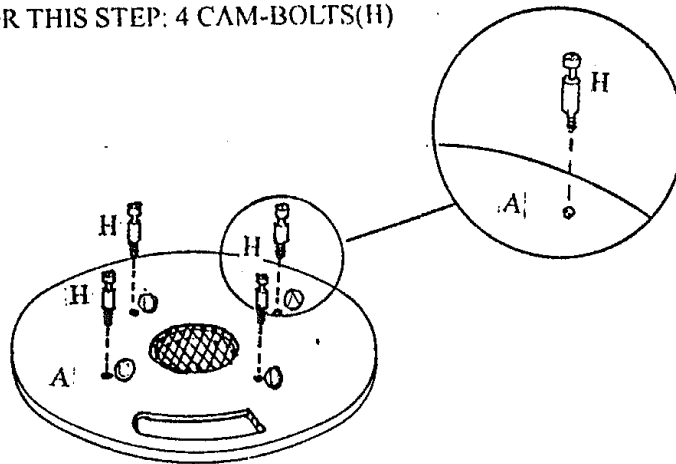
HARDWARE LIST			
(H) CAM-BOLTS	4PCS	(K) PLASTIC TRACK	1PC
			
(I) CAM-LOCKS	4PCS	(L) PLASTIC LOCKS	2PCS
			
(J) COVERS	4PCS		
			
<b>TOOLS REQUIRED: ( NOT INCLUDED)</b> <ul style="list-style-type: none"> <li>● PHILLIP HEAD SCREWDRIVER</li> <li>● FLATHEAD SCREWDRIVER</li> </ul>			

## ASSEMBLY INSTRUCTION

### STEP 1

PARTS NEEDED FOR THIS STEP: 1 TABLE TOP(A)

HARDWARE NEEDED FOR THIS STEP: 4 CAM-BOLTS(H)

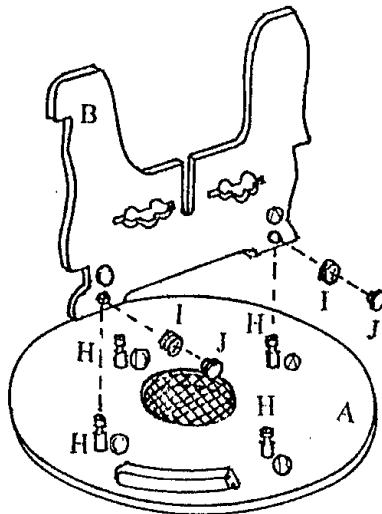


- PLACE TABLE TOP(A) UPSIDE DOWN ON A SMOOTH SURFACE.
- INSERT 4 CAM-BOLTS(H) INTO PREDRILLED HOLES AS SHOWN IN DIAGRAM AND TIGHTEN USING FLATHEAD SCREWDRIVER.

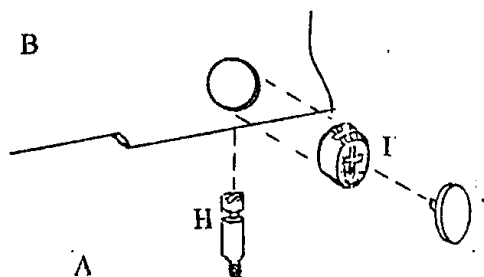
### STEP 2

PARTS NEEDED FOR THIS STEP: 1 UPPER LEGS PANEL W / "A" AND "C" MARKS(B)

HARDWARE NEEDED FOR THIS STEP: 2 CAM-LOCKS(I), 2 COVERS(J)



- PLACE UPPER LEGS PANEL W / "A" AND "C" MARKS(B) OVER DIAGONAL TWO CAM-BOLTS(H) ON TABLE TOP(A) WITH "A" AND "C" MARKS. BE SURE THAT MARK "A" ON UPPER LEGS PANEL(B) MUST BE CORRESPONDED MARK "A" ON TABLE TOP(A), MARK "C" ON UPPER LEGS PANEL(B) MUST BE CORRESPONDED MARK "C" ON TABLE TOP(A).
- INSERT 2 CAM-LOCKS(I) INTO BIG HOLES ON UPPER LEGS PANEL W/"A" AND "C" MARKS(B) WITH SLOT FOR SCREWDRIVER ARE FACING OUTWARD. ROTATE CAM-LOCKS(I) WITH PHILLIP HEAD SCREWDRIVER UNTIL DIRECTION ARROW POINTS TOWARD CAM-BOLTS(H).

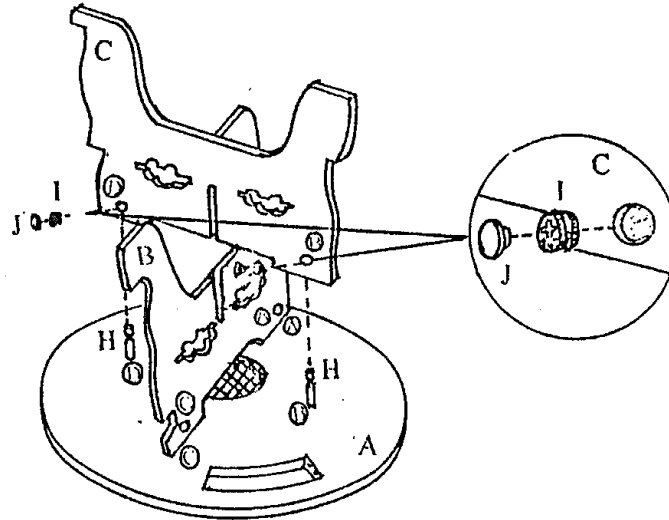


- INSERT CAM-BOLTS(H) EXTENDING FROM TABLE TOP(A) INTO HOLES ON UPPER LEGS PANEL W/ "A" AND "C" MARKS(B). ROTATE CAM-LOCKS(I) CLOCKWISE TO SECURE TABLE TOP(A) TO UPPER LEGS PANEL W/ "A" AND "C" MARKS(B). INSERT COVERS(J) INTO CAM-LOCKS(I).

### STEP 3

PARTS NEEDED FOR THIS STEP: 1 LOWER LEGS PANEL W/ "B" AND "D" MARKS(C)

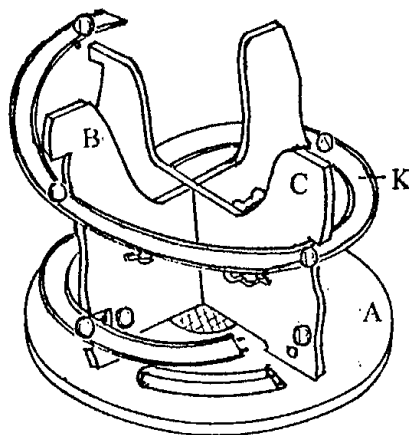
HARDWARE NEEDED FOR THIS STEP: 2 CAM-LOCKS(I), 2 COVERS(J)



- PLACE LOWER LEGS PANEL W/ "B" AND "D" MARKS(C) OVER ANOTHER DIAGONAL TWO CAM-BOLTS (H) ON TABLE TOP(A) AND ALIGN NOTCHES ON UPPER AND LOWER LEGS PANELS(B,C). BE SURE THAT MARK "B" ON LOWER LEGS PANEL(C) MUST BE CORRESPONDED MARK "B" ON TABLE TOP(A). MARK "D" ON LOWER LEGS PANEL(C) MUST BE CORRESPONDED MARK "D" ON TABLE TOP(A).
- INSERT 2 CAM-LOCKS(I) INTO BIG HOLES ON LOWER LEGS PANEL W/ "B" AND "D" MARKS(C) WITH SLOT FOR SCREWDRIVER ARE FACING OUTWARD. ROTATE CAM-LOCKS(I) WITH PHILLIP HEAD SCREWDRIVER UNTIL DIRECTION ARROW POINTS TOWARD CAM-BOLTS(H).
- INSERT CAM-BOLTS(H) EXTENDING FROM TABLE TOP(A) INTO HOLES ON LOWER LEGS PANEL(C). ROTATE CAM-LOCKS(I) CLOCKWISE TO SECURE TABLE TOP(A) TO LOWER LEGS PANEL(C). INSERT COVERS(J) INTO CAM-LOCKS(I).

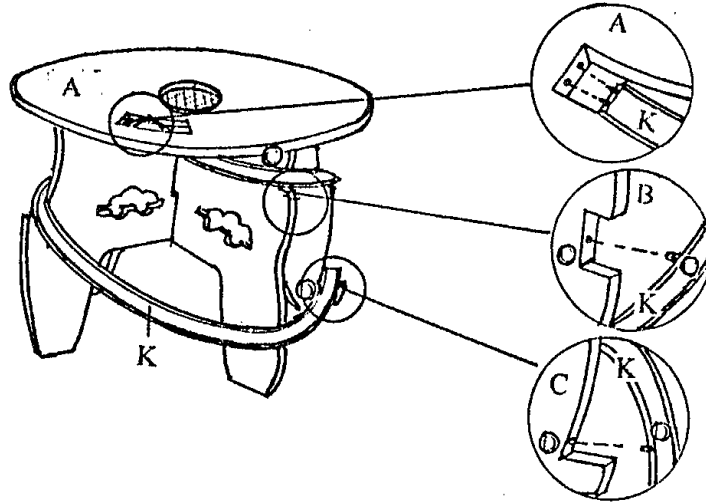
### STEP 4

HARDWARE NEEDED FOR THIS STEP: 1 PLASTIC TRACK(K)



- PLACE PLASTIC TRACK(K) UPSIDE DOWN.
- CAREFULLY PLACE PLASTIC TRACK(K) IN POSITION AGAINST NOTCHES ON UPPER AND LOWER LEGS PANELS(B,C). BE SURE THAT THE MARKS(A,B,C,D) ON UNDERSIDE OF PLASTIC TRACK(K) MUST BE ASSEMBLED ON CORRECT CORRESPONDING LEGS(A,B,C,D). FOR EXAMPLE: THE MARK "A" ON PLASTIC TRACK(K) MUST BE ASSEMBLED ON LEG "A". THE MARK "B" ON PLASTIC TRACK(K) MUST BE ASSEMBLED ON LEG "B".

#### STEP 5



- TURN TABLE UPRIGHT.
- INSERT PLASTIC PINS EXTENDING FROM END OF PLASTIC TRACK(K) INTO PREDRILLED HOLES ON NOTCH OF TABLE TOP(A).
- INSERT PLASTIC PINS EXTENDING FROM INSIDE EDGE OF PLASTIC TRACK(K) NEAR TO MARK "C" INTO PREDRILLED HOLE ON HIGHEST NOTCH OF LEG WITH MARK "C".
- INSERT PLASTIC PINS EXTENDING FROM INSIDE EDGE OF PLASTIC TRACK(K) NEAR TO MARK "D" INTO PREDRILLED HOLE ON LOWEST NOTCH OF LEG WITH MARK "D".

#### STEP 6

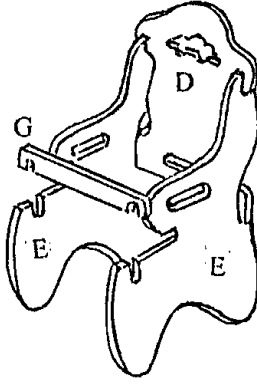
PARTS NEEDED FOR THIS STEP: 1 CHAIR BACK PANEL(D), 2 CHAIR SIDE PANELS(E)



- INSERT CHAIR BACK PANEL(D) INTO NOTCHED ON BACK OF ONE CHAIR SIDE PANEL(E) AND SLIDE TO SECURE CHAIR BACK PANEL(D) TO CHAIR SIDE PANEL(E). PERFORM THE SAME WAY TO ASSEMBLE ANOTHER CHAIR SIDE PANEL(E).

### STEP 7

PARTS NEEDED FOR THIS STEP: 1 CROSS BRACE(G)

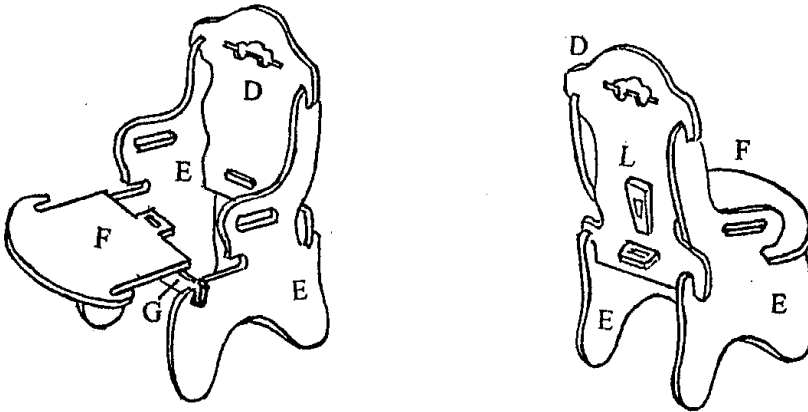


- ALIGN NOTCHES ON CROSS BRACES(G) WITH NOTCHES ON TOP EDGE OF CHAIR SIDE PANELS(E) AND PRESS DOWN TO RESTS ON CHAIR SIDE PANELS(E)

### STEP 8

PARTS NEEDED FOR THIS STEP: 1 CHAIR SEAT PANEL(F)

HARDWARE NEEDED FOR THIS STEP: 1 PLASTIC LOCK(L)



- INSERT CHAIR SEAT PANEL(F) INTO CORRESPONDING SLOT ON CHAIR BACK PANEL(D) AND ALIGNED NOTCHES ON CHAIR SEAT PANEL(F) WITH CHAIR SIDE PANELS(E). INSERT PLASTIC LOCK(L) INTO SLOT ON BACK OF CHAIR.

### STEP 9

PERFORM STEP 6 – STEP 8 TO ASSEMBLE ANOTHER CHAIR

**YOUR NEW INDIE'S KID'S CAR TRACK TABLE AND CHAIR SET IS FINISHED AND READY TO USE.**

Please count, identify and compare parts and hardware list to be sure all parts are present. Extra hardware may be included. If any items are missing, please contact our parts/ service department at (800) 633-5096 or in Dallas (972) 869-0111/ 9am-4pm Mon-Fri central time. Missing or damaged hardware and/ or parts will be replaced free of charge. WE DO NOT SELL PARTS.

WE DO NOT RECOMMEND MODIFYING PRODUCT(S) AND WE ARE NOT RESPONSIBLE FOR ANY DAMAGES DUE TO PRODUCT MODIFICATION(S).

### PARTS REPLACEMENT FORM

STYLE NO: DN9500

Customer Name

PARTS  
LETTER

PART  
DESCRIPTION

QUANTITY  
NEEDED

Street, City, State, Zip



SOUTHERN ENTERPRISES INC.  
P.O. Box 59996 Dallas, Texas 75229

Please indicate where you purchased this item.  
Store/website/catalog

/ /

Please indicate color/size/style number

/ /