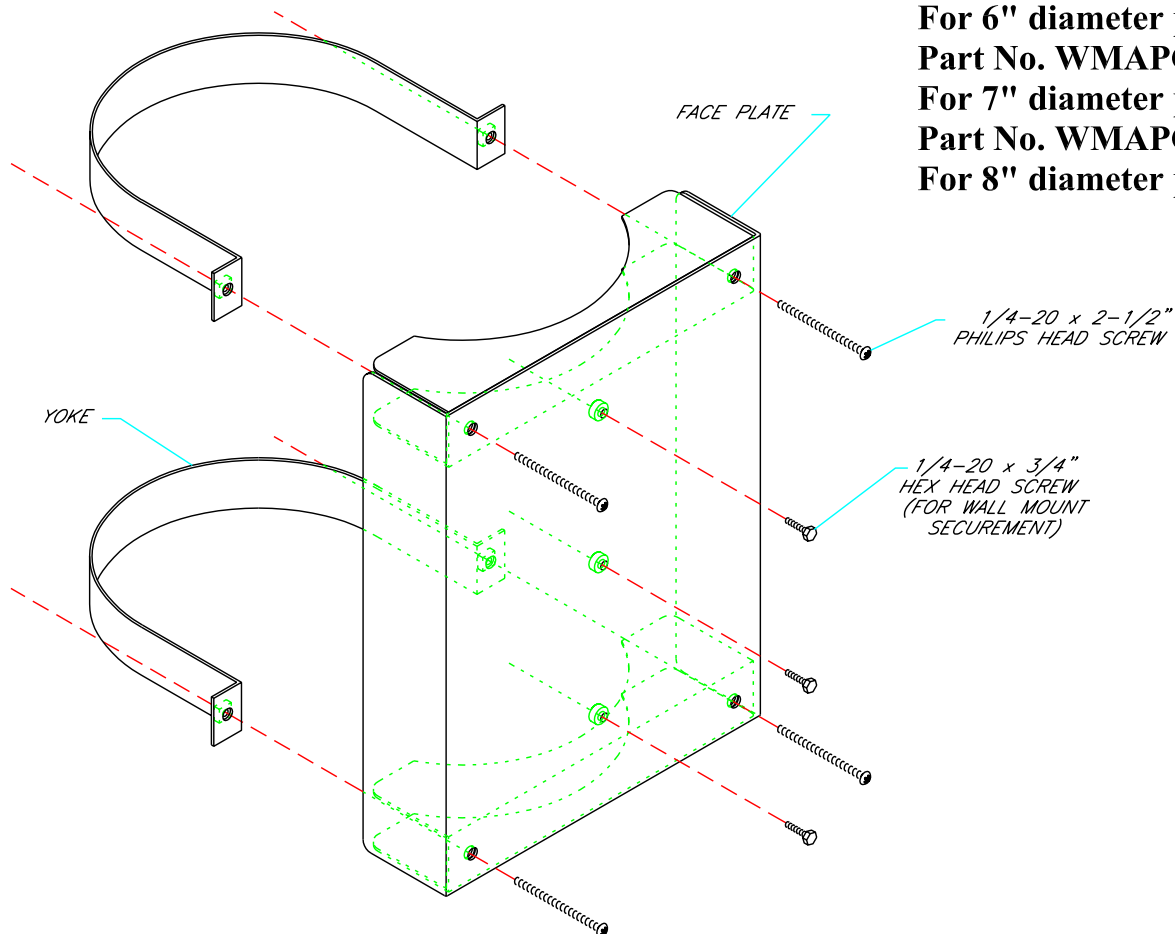


## INSTALLATION INSTRUCTIONS

# WMAPC6 / WMAPC7 / WMAPC8 Post Mounting Brackets

**Part No. WMAPC6**  
**For 6" diameter posts**  
**Part No. WMAPC7**  
**For 7" diameter posts**  
**Part No. WMAPC8**  
**For 8" diameter posts**



1. Place one yoke around the post at desired height.
2. Place the face plate against the yoke heads. Attach the face plate to the yoke with 1/4-20 x 2-1/2" Phillips head screws. Before tightening screws verify that the face plate is positioned so that the monitor will be facing the desired direction when mounted.
3. Place the second yoke around the post and secure the yoke to the plate with the remaining 1/4-20 x 2-1/2" Phillips head screws.
4. Thoroughly tighten all four screws.
5. Install the wall mount as directed in the wall mount installation instructions, but use 1/4-20 x 3/4" hex head screws to attach wall mount to the mounting bracket.