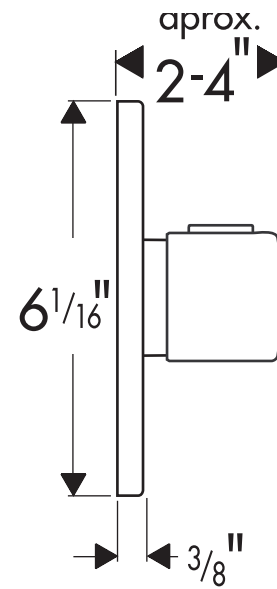
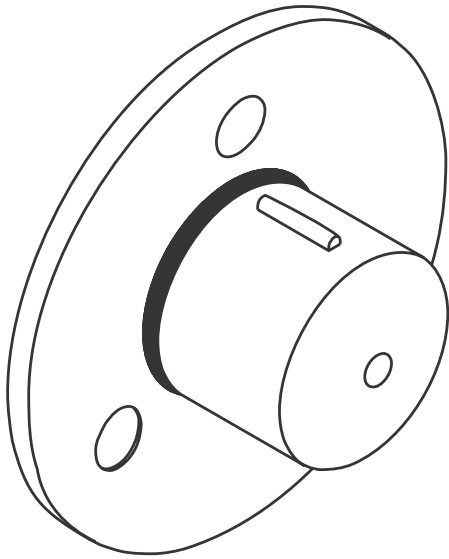


Axor Steel™ Quattro Diverter Trim 35933801

Available in Steel

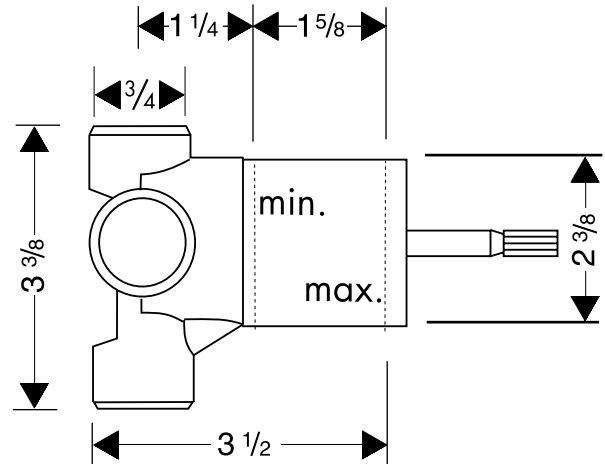
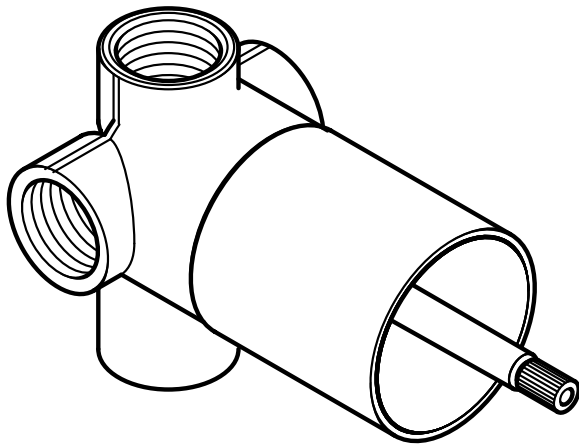


Product Specification

Requires Quattro diverter rough-in 13932181

Available accessory: extension kit 92630000

Quattro Diverter Rough-In 13932181



Product Specification

Trim kit purchased separately.
Nominal capacity @ 45 PSI
Ceramic cartridge

17 GPM*

This unit is a diverter only. It does not turn the water on or off, and does not control the temperature. It is intended for use with either a pressure balancing valve or with a thermostatic mixer valve plus volume control valve.

The Quattro has one inlet port for the mixed water and three outlet ports. It allows the user to select any one of the three functions singly, or any two functions in combination. If the Quattro is to control two functions only, please contact Hansgrohe for special piping instructions.

*The actual flow rate will be limited to the flow rate of the mixing valve.

hansgrohe