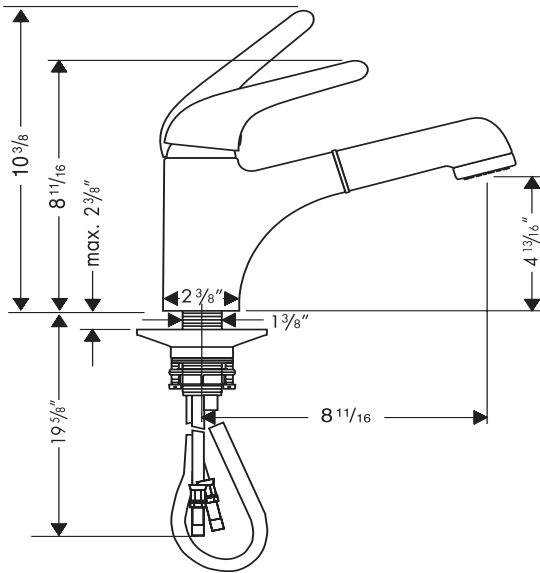


Allegra Steel Kitchen Mixer  
35807801

## Steel Kitchen Mixer 35807801



Max water pressure	145 PSI
Recommended water pressure	45 - 72.5 PSI
Recommended hot water temp	120° - 140° F*
Hole Size in Deck	1 3/8" - 1 5/8"
Max. Deck Thickness	2 1/4"
Flow Rate:	2.2 GPM



**Important:** This faucet includes 10 mm compression by 1/2" MIP check valve/adapters for the hot and cold supplies. These MUST be used to insure that the drinking water supply is protected from back siphonage

### Installer Notes:

Significant pressure differences between the hot and cold water supplies should be corrected.

Backflow prevention is provided by the check valve adapters and by check valves in the sprayhead.

\*Please know and follow all applicable local codes when setting the temperature on the water heater.

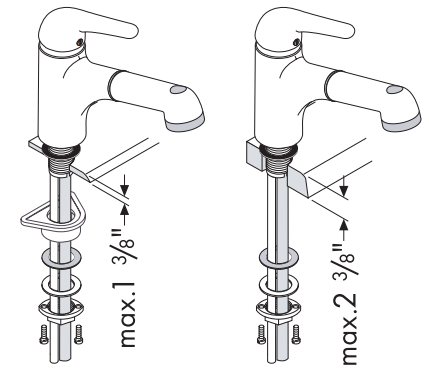
### Preparation for Installation:

Turn the water supplies off before removing the old faucet. Be safe! Hot WATER CAN CAUSE DAMAGE TO YOUR PROPERTY, AND INJURY OR DEATH TO YOU!

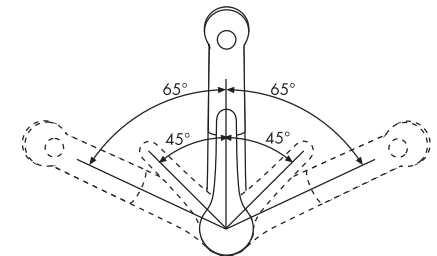
Flush the supply lines of debris before beginning installation. Damage to the cartridge caused by debris is not covered under the Hansgrohe limited lifetime warranty.

### Install the faucet on the sink:

- Leave the black rubber washer in place on the faucet. Remove the slide washer, metal washer, and collar nut from the faucet shank and place in a safe, convenient location. Feed the supply lines, handspray hose, and faucet shank the faucet deck. From underneath the sink, install the plastic washer, slide washer, and metal washer. Thread on the collar nut loosely.
- If the total thickness of the mounting surface is greater than 1-3/8", omit the plastic washer. From above the sink, inspect the placement of the faucet. Reposition if necessary.

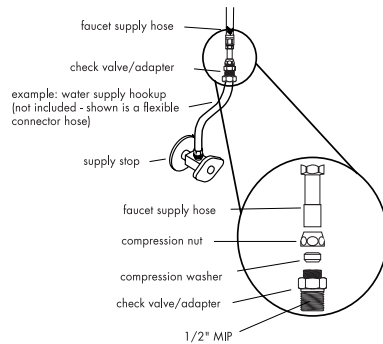


- Check the swivel of the faucet spout - it should swivel equally to the right and to the left. If it appears to swivel more to one side than to the other, pivot the faucet body until the swivel is even.
- When you are satisfied that everything is oriented properly, finish tightening the collar nut. Tighten the tensioning screws.



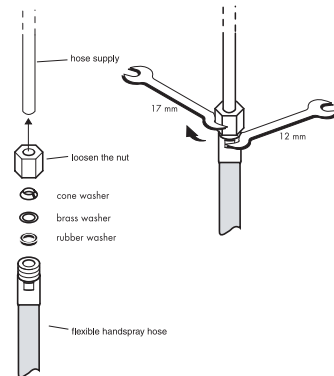
## Install the water supplies:

- Install your water supply hookup (not included), carefully following the manufacturers instructions.
- Thread the 1/2" MIP end of the check valve/adapter into the supply hook-up.
- Remove the compression nut and washer from the check valve/ adapter. Slide them over the end of the faucet supply hose. Insure that the metal side of the compression washer faces away from the check valve (toward the faucet body)



## Connect the handspray hose:

- Loosen the compression fitting on the end of the flexible handspray hose. Slide it onto the end of the metal hose supply tube.
- While holding the hose still with a 12 mm wrench, tighten the nut with a 17 mm wrench.
- DO NOT ALLOW THE HOSE TO TWIST. IF THE HOSE TWISTS, THE FLOW FROM THE SPRAYHEAD MAY BE REDUCED.



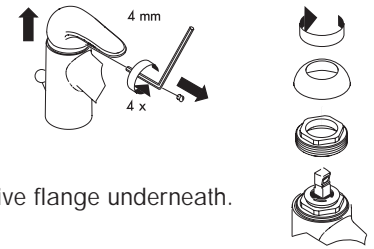
## Install the hose weight:

- Proper installation of the hose weight will insure that the handspray hose retracts smoothly.
- On the handshower side of the hose, use a ruler to measure 15" down from the body of the faucet. Install the hose weight at this point.
- Pull out on the handspray, and guide it back into the faucet. It should move easily and retract smoothly. Reposition the hose weight if necessary.

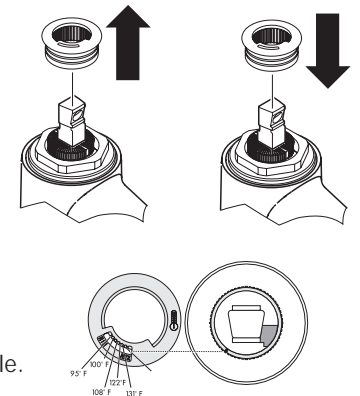
**Turn on the water. Check all connections for leaks. Check the faucet for proper operation.**

## Set the High Temperature Limit Stop:

- Turn off the water at the supply stops.
- Close the drain or cover it with a cloth. Gently pry off the screw cover. Put it aside in a safe place. Use a 4mm hex wrench to loosen the handle screw (4 revolutions). Remove the handle, and the decorative flange underneath.
- Remove the nut.

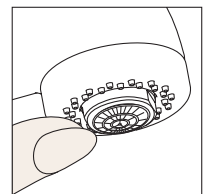


- Remove the handle screw from the stem of the cartridge.
- Remove the high temperature limit stop.
- Replace the high temperature limit stop so that the pin is in the desired notch. The temperatures marked on the diagram assume an incoming hot water temperature of 140<sup>o</sup> F and an incoming cold water temperature of 50<sup>o</sup> F, and a water pressure of 45 psi. Your results will vary.
- Replace the nut, nut cover, screw, and handle.

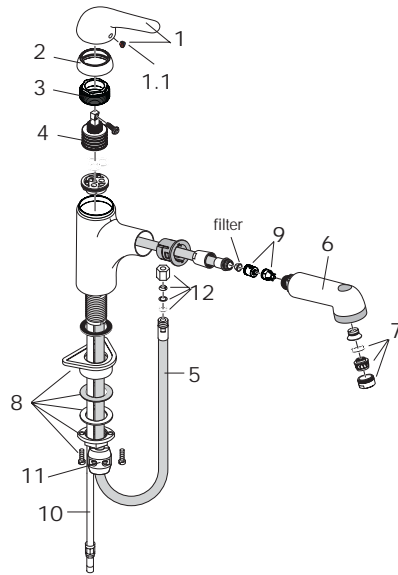


## User Instructions

- The faucet is turned on or off by lifting or lowering the handle, respectively. Rotating the handle to the left delivers hot water, and to the right, cold water.
- If the flow rate diminishes over time, clean the strainer screen at the spray hose / spray head connection.
- The hand spray can be drawn approximately 19 1/2" from the faucet body.
- The spray mode is changed by pressing the button on top of the hand spray.
- The spray channels on the handspray use the Rubit cleaning system. If mineral deposits are noticed in the spray channels, turn the water on lightly and wipe with your thumb or with a cloth.



## Replacement Parts:



1.	handle	35891800
1.1	screw cover	94186000
2	flange	97650800
3	nut	94194000
4	M3 cartridge	92730000
5	hose	95048000
6	handspray	35893800
7	aerator	97691000
8	mounting set	95049000
9	check valve	97350000
10	connection hose	96510000
11	hose weight	98551000
12	squeezing connection	96099000

## Cleaning Recommendation for Hansgrohe Products

Modern faucets and shower products utilize a combination of materials to comply with the needs of the market with regard to design and functionality.

To avoid damage, it is necessary to use some caution when cleaning. Damage caused by improper treatment is not covered under the Hansgrohe warranty.

### Cleaning Materials for Faucets and Showers

- To remove lime scale, use only products made specifically for that purpose. Always follow the manufacturer's instructions when using.
- Do not use cleaners that contain hydrochloric, formic, acetic, or phosphoric acids, as these will cause considerable damage to finishes and to plastic components.
- Never mix cleaning materials.
- Never use cleaners containing abrasives. Do not use abrasive cleaning cloths, pads, or sponges.

### Cleaning Procedures

- Clean your faucets and shower products as and when required. Regular cleaning will prevent scale buildup and water spotting.
- Follow the label instructions. Do not allow any cleaner to remain on the product for longer than necessary.
- When using spray cleaners, spray first onto a sponge or cloth – do not spray directly onto the product.
- After cleaning, rinse thoroughly with clear water to remove any cleaner residue.

### Important

- Soap and shampoo residue can also cause damage to the product. Rinse well with clean water after use.
- If the surface is already damaged, harsh cleaning materials will cause further damage.

## Limited Lifetime Consumer Warranty

This product has been manufactured and tested to the highest quality standards by Hansgrohe, Inc. ("Hansgrohe"). This warranty is limited to Hansgrohe products which are purchased by a consumer in the United States after March 1, 1996, and installed in either the United States or Canada.

### WHO IS COVERED BY THE WARRANTY

This warranty extends to the original consumer purchaser only.

### WHAT IS COVERED BY THE WARRANTY

This warranty covers only your Hansgrohe manufactured product. Hansgrohe warrants this product against defects in material or workmanship as follows: Hansgrohe will repair at no charge for parts only or, at its option, replace any product or part of the product which proves defective because of improper workmanship and/or material, under normal installation, use, service and maintenance. If Hansgrohe is unable to provide a replacement and repair is not practical or cannot be timely made, Hansgrohe may elect to refund the purchase price in exchange for the return of the product.

### LENGTH OF WARRANTY

Replacement or repaired parts of products will be covered for the term of this warranty as stated in the following two sentences. If you are a consumer who purchased the product for use primarily for personal, family, or household purposes, this warranty extends for as long as you own the product and the home in which the product is installed. If you purchased the product for use primarily for any other purpose, including, without limitation, a commercial purpose, this warranty extends only (i) for 1 year, with respect to Interaktiv and Retroaktiv products, and (ii) for 5 years, with respect to AXOR, ShowerPower and Pharo products.

### THIS WARRANTY DOES NOT COVER, AND HANSGROHE WILL NOT PAY FOR:

- Conditions, malfunctions or damage not resulting from defects in material or workmanship.
- Conditions, malfunctions or damage resulting from (1) improper installation, improper maintenance, misuse, abuse, negligence, accident or alteration, or (2) the use of abrasive or caustic cleaning agents or "no rinse" cleaning products, or the use of the product in any manner contrary to the product instructions.
- Labor or other expenses for the disconnection or return of the product for warranty service, or for installation or reinstallation of the product.
- Accessories or related products not manufactured by Hansgrohe.

### TO OBTAIN WARRANTY SERVICE

Contact your Hansgrohe retailer, or write to Technical Service at:

Hansgrohe Inc.  
1492 Bluegrass Lakes Parkway  
Alpharetta GA 30004

Or, call Hansgrohe toll-free at (800) 334-0455.

In requesting warranty service, you will need to provide

1. The sales receipt or other evidence of the date and place of purchase.
2. A description of the problem.
3. Delivery of the product or the defective part, postage prepaid and carefully packed and insured, to Hansgrohe Inc. 1492 Bluegrass Lakes Parkway, Alpharetta, Georgia 30004, Attention: Technical Service, if required by Hansgrohe.

When warranty service is completed, any repaired or replacement product or part will be returned to you postage prepaid.

***EXCLUSIONS AND LIMITATIONS***

***REPAIR OR REPLACEMENT (OR, IN LIMITED CIRCUMSTANCES, REFUND OF THE PURCHASE PRICE) AS PROVIDED UNDER THIS WARRANTY IS THE EXCLUSIVE REMEDY OF THE PURCHASER. HANSGROHE NEITHER ASSUMES NOR AUTHORIZES ANY PERSON TO CREATE FOR IT ANY OBLIGATION OR LIABILITY IN CONNECTION WITH THIS PRODUCT.***

***HANSGROHE SHALL NOT BE LIABLE TO PURCHASER OR ANY PERSON FOR ANY INCIDENTAL, SPECIAL, OR CONSEQUENTIAL DAMAGES, ARISING OUT OF BREACH OF THIS WARRANTY OR ANY IMPLIED WARRANTY (INCLUDING MERCHANTABILITY).***

Some States do not allow the exclusion or limitation of incidental or consequential damages, so the above limitation or exclusion may not apply to you.

This warranty gives you specific legal rights, and you may have other rights which vary from State to State.

You may be required by law to give us a reasonable opportunity to correct or cure any failure to comply before you can bring any action in court against us under the Magnuson-Moss Warranty Act.

***PRODUCT INSTRUCTIONS AND QUESTIONS***

Upon purchase or prior to installation, please carefully inspect your Hansgrohe product for any damage or visible defect. Prior to installing, always carefully study the enclosed instructions on the proper installation and the care and maintenance of the product. If you have questions at any time about the use, installation, or performance of your Hansgrohe product, or this warranty, please call or write to us at the toll-free number and address printed above.

***Hansgrohe Inc.***  
1490 Bluegrass Lakes Parkway  
Alpharetta GA 30004  
Phone 770-360-9880  
Internet [www.hansgrohe-USA.com](http://www.hansgrohe-USA.com)