

CHICAGO[®]
FAUCETS

2100 SOUTH CLEARWATER DRIVE
DES PLAINES, ILLINOIS 60018-5999

FITTING NO.

980-901BAGV

SUBMITTED MODEL NO.

JOB NAME

ITEM NO.

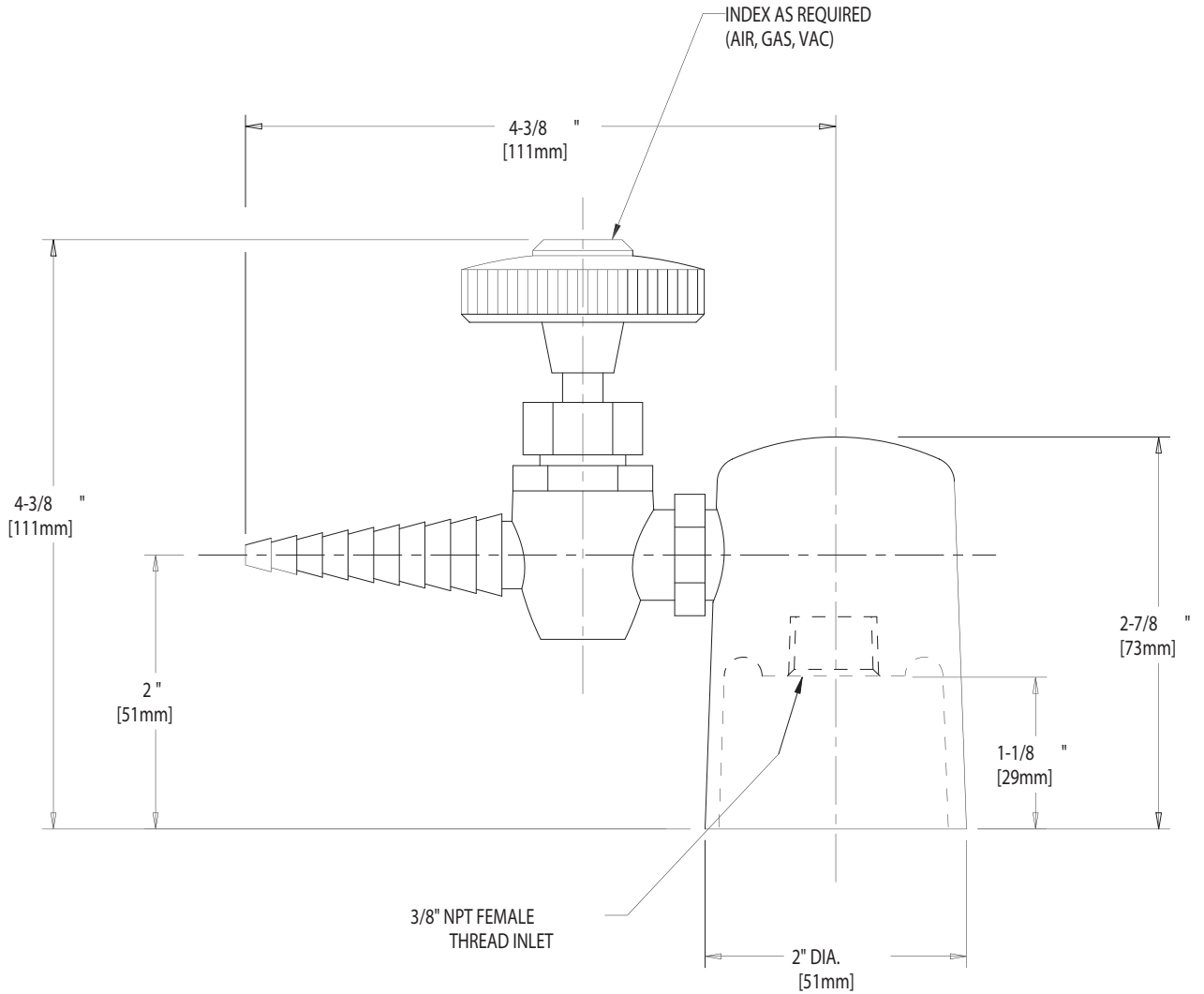
SUBMITTED AS SHOWN

SUBMITTED AS NOTED

SEE ATTACHED FOR
SUBMITTED MODIFICATION

IS ASSUMED FOR USE OF SUPERCEDED OR VOIDED DATA. (0192-1)

ROUGHING IN DIMENSIONS MAY VARY AND ARE SUBJECT TO CHANGE. NO RESPONSIBILITY



DIMENSIONS IN INCHES AND [MILLIMETERS].

TECHNICAL DATA

- DECK MOUNTED LABORATORY TURRET
- 901B NEEDLE VALVE
- WHEEL HANDLE WITH INDEX BUTTON (SPECIFY INDEX)
- FINISH AS SPECIFIED

DATE: 7-2-01

BY: JAR

CHK'D:

APP'D:

REV:

980-901BAGV