

PARTS LIST

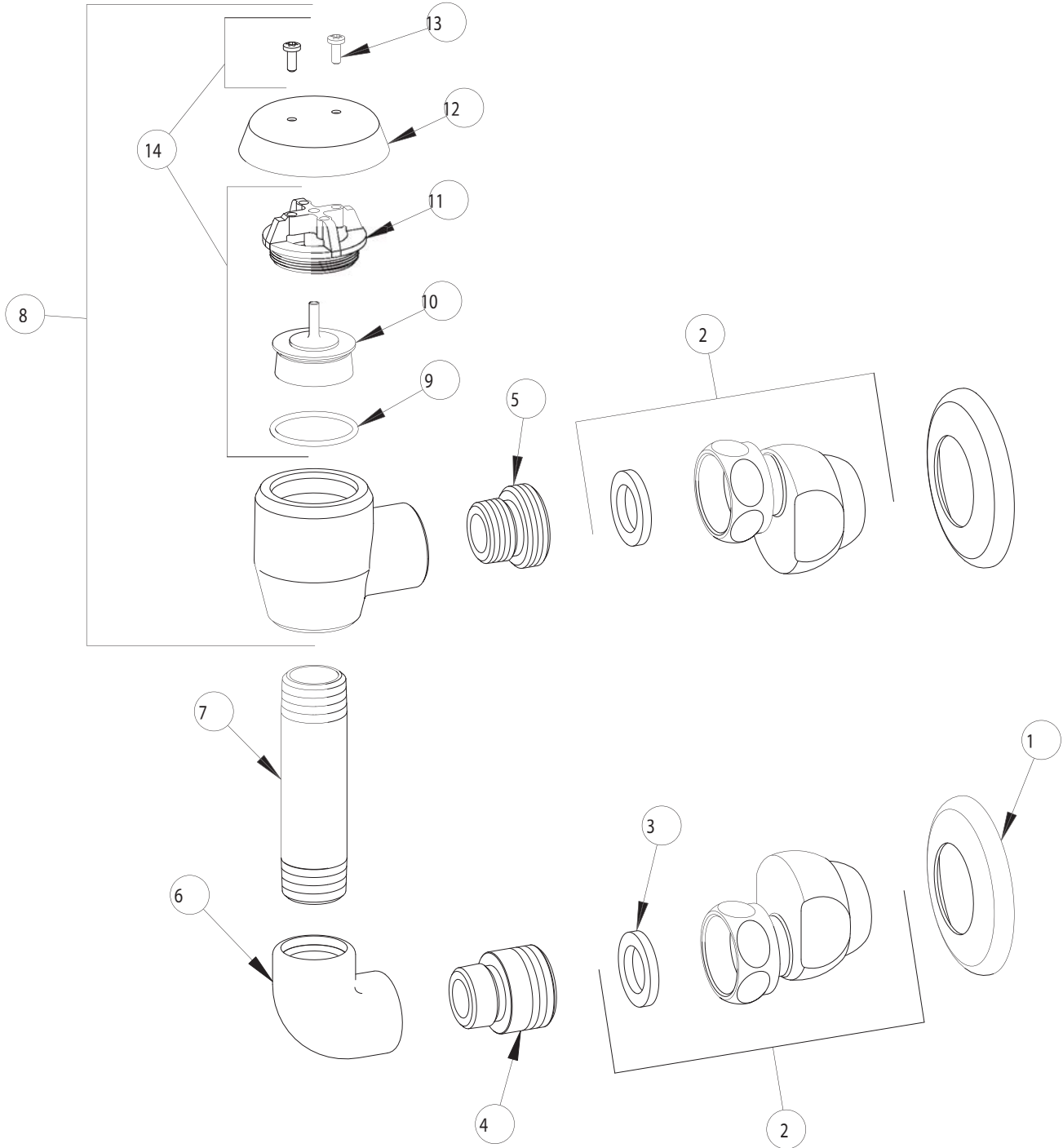
BY: SID
CHK'D:



FINISH:
DATE:

AS SPECIFIED
10-26-01

892-G



ITEM NO.	PART NO.	DESCRIPTION	ITEM NO.	PART NO.	DESCRIPTION
1	1-055	FLANGE	8	892	FOR PARTS SEE 892
2	G	'G' ARM (INCLUDES WASHER)	9	80-007	O-RING
3	1-011	WASHER	10	892-032K	VACUUM BREAKER DISC ASSEMBLY
4	5-104	ADAPTER	11	892-202	VACUUM BREAKER SEAT
5	5-004	ADAPTER	12	892-154	VACUUM BREAKER COVER
6	607-101	ELBOW	13	333-321	VACUUM BREAKER TORX SCREW
7	977-006	NIPPLE	14	892-202K	VACUUM BREAKER REPAIR KIT