



# CAMPBELL HAUSFELD

BUILT TO LAST

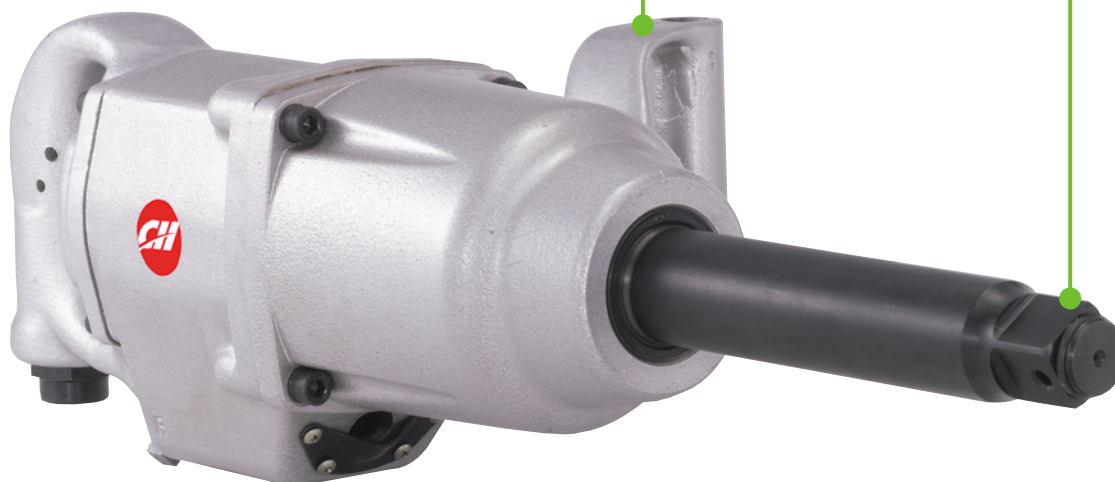
**SERIOUS DUTY™**

PL1557

## 1" Impact Wrench

1" Square drive and 6" anvil

Side handle for stability during use



### FEATURES & BENEFITS

- Quickly remove and replace fasteners on semi-trucks and other large vehicles
- 6" anvil for extended reach into deep tire wells
- Equipped with a side handle for better control



### PRODUCT SPECIFICATIONS

Part No.	Torque	Impacts Per Min.	SCFM	Air Pressure	Air Inlet
PL1557	1100ft. lbs.	750	17.5	90 PSI	1/2" NPT