

SILHOUETTE TRIPLE BOWL KITCHEN SINK

- Americast brand engineered material
- Triple bowl design
- Self-rimming or undercounter installation
- Silicone sealant supplied
- Available in 1, 3, 4, or 5 faucet hole configuration

Self-Rimming:

- 7183.001** Center hole only
- 7183.803** 3 hole
- 7183.804** 4 hole
- 7183.805** 5 hole

Undercounter Installation:

- 791239-100** Mounting Kit (consists of cut-out templates and mounting kits)

NOTE: For undercounter installation order self-rimming model with desired hole punchings along with 791239-100 Mounting Kit.

Nominal Dimensions: 1054 x 559 x 241mm
(41-1/2" x 22" x 9-1/2")

Bowl sizes:

Right Hand: 359mm (14-1/8") wide, 413mm (16-1/4") front to back, 229mm (9") deep
Center: 191mm (7-1/2") wide, 413mm (16-1/4") front to back, 178mm (7") deep
Left Hand: 359mm (14-1/8") wide, 476mm (18-3/4") front to back 229mm (9") deep

Compliance Certifications -

Meets or Exceeds the Following Specifications:

- ASME A112.19.4M for Americast Plumbing Fixtures
- ASTM E162 for Flammability
- NFPA 258 for Smoke Density



Self-rimming sink shown with 4205.661 Silhouette Kitchen Faucet with Spray (not included)



Undercounter mount sink shown with 4205.661 Silhouette Kitchen Faucet with Spray (not included)

To Be Specified

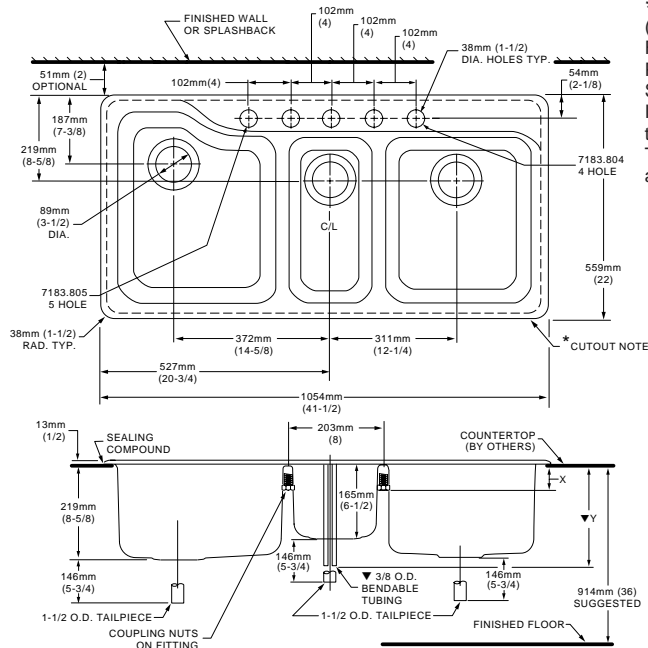
- Color (specify color):
- Faucet* (specify finish):
- Basket Strainer: 4331.013
- Soap Dispenser: 4503.115, (specify color):
- Traps:

See Pgs. KSS-05B & 05C for Colors and information on the following items:

- Coated Wire Utility Basket: 7346.100, Color:
- Wood Cutting Board: 9000.250
- Colander for Cutting Board: 8102.100, Color:
- Large Colander: 8103.100, Color:
- Deep Web Colander: 8105.100, Color:
- Shallow Web Colander: 8104.100, Color:
- Web Cover: 8106.100, Color:

* See faucet section for additional models available

7183.803/804/805



FAUCET	7183.803	7183.804	X	Y▼
SILHOUETTE	4205.660	4205.661	—	257mm(10-1/8)
RELIANT	4205.241	4205.217	—	254mm(10)
HERITAGE AMARILIS	TOP MOUNT 6270.000	6279.000	44mm(1-3/4)	—
	BOTTOM MOUNT 8280.SER.	8281.SER.	95mm(3-3/4)	—

NOTES:

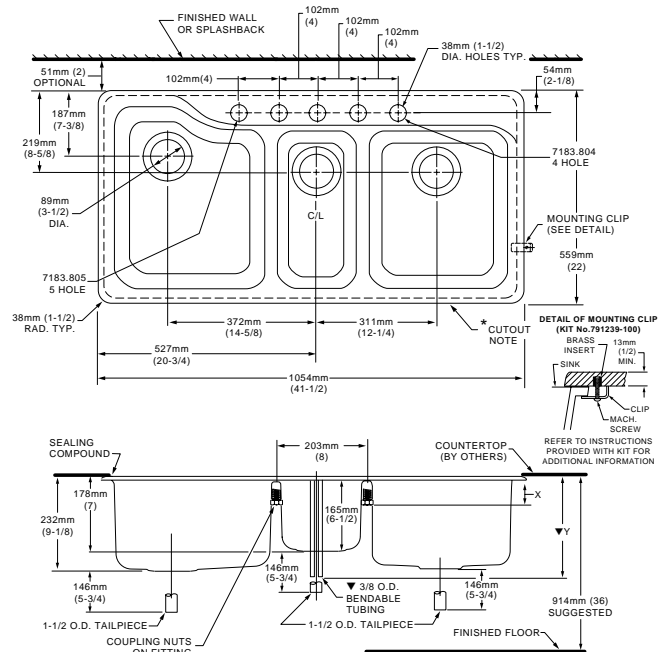
* COUNTERTOP CUTOUT 1022mm x 527mm WITH 25mm RADIUS (40-1/4 X 20-3/4 WITH 1" RADIUS) AT CORNERS.

FITTINGS NOT INCLUDED AND MUST BE ORDERED SEPARATELY. PROVIDE SUITABLE REINFORCEMENT FOR ALL WALL AND COUNTERTOP SUPPORTS.

IMPORTANT: Dimensions of fixtures are nominal and may vary within the range of tolerances established by ANSI Standard A112.19.4

These measurements are subject to change or cancellation. No responsibility is assumed for use of superseded or voided leaflet.

Undercounter Mount



FAUCET	7183.803	7183.804	X	Y▼
SILHOUETTE	4205.660	4205.661	—	270mm(10-5/8)
RELIANT	4205.241	4205.217	—	267mm(10-1/2)
HERITAGE AMARILIS	TOP MOUNT 6270.000	6279.000	57mm(2-1/4)	—
	BOTTOM MOUNT 8280.SER.	8281.SER.	108mm(4-1/4)	—

NOTES:

* TEMPLATE PROVIDED WITH MOUNTING KIT 791239-100 FOR EXPOSED FAUCET DECK OR UNDERCOUNTER FAUCET DECK COUNTERTOP CUTOUT VARIATIONS
FITTINGS NOT INCLUDED AND MUST BE ORDERED SEPARATELY. PROVIDE SUITABLE REINFORCEMENT FOR ALL WALL AND COUNTERTOP SUPPORTS.

IMPORTANT: Dimensions of fixtures are nominal and may vary within the range of tolerances established by ANSI Standard A112.19.4
These measurements are subject to change or cancellation. No responsibility is assumed for use of superseded or voided leaflet.