

CADENZA WHIRLPOOL

6060.028W Whirlpool featuring System II

- Acrylic with fiberglass reinforcement
- Pre-leveled tub bottom
- Two person design with center drain and dual lumbar ends
- Molded-in seat
- Wave style grab bar
- 2.0 HP, two speed, self-draining pump/motor with pulse feature
- Factory installed power cord and plug
- Ten multi-directional and flow-adjustable jets including:
 - Two Ideal-flow jets
 - Six body massage jets
 - Two recessed back-rest jets
- Deck-mounted electronic control with 20 minute built-in timed safety shut off and Chrome Bezel
- Three silent air volume controls
- Quick Connect Safe-T-Heater connection system
- Factory installed and tested whirlpool system

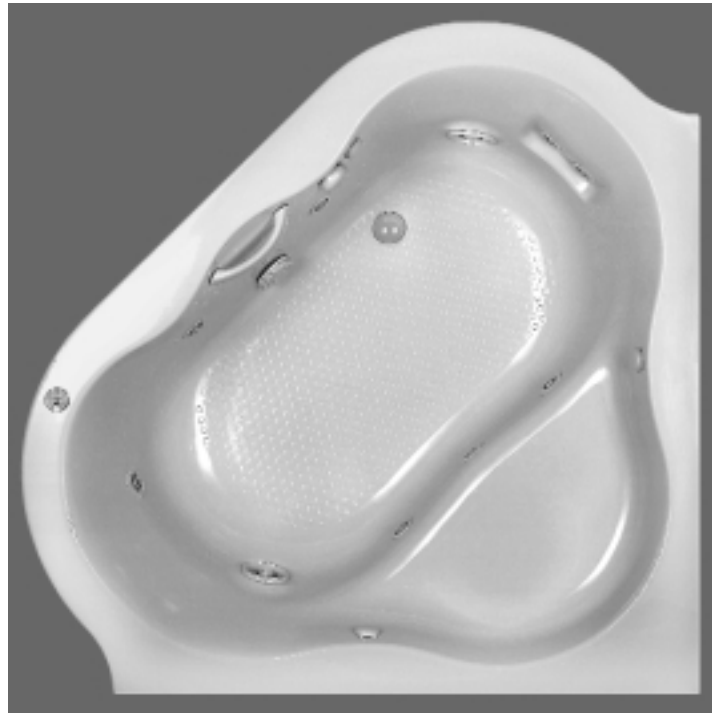
6060.028WC StayClean™ Whirlpool Massage featuring System II

- Same as 6060.028W except with the StayClean™ whirlpool system featuring Antimicrobial AlphaSan®

Nominal Dimensions: 1384 x 1384 x 546mm
(54-1/2" x 54-1/2" x 21-1/2")

Compliance Certifications - Meets or Exceeds the Following Specifications:

- Underwriters Laboratories - Hydromassage Bathtubs UL 1795
- ASME A112.19.7M for Whirlpool Appliances
- ANSI Z124.1 for Plastic Bathtubs
- ASTM E162 for Flammability
- NFPA 258 for Smoke Density



To Be Specified - Required:

- Color:
- Bath Filler: (specify finish)
- Symphony Drain: 1573.272 (specify color)
or
- Bath Drain: 1583.470 (specify finish)

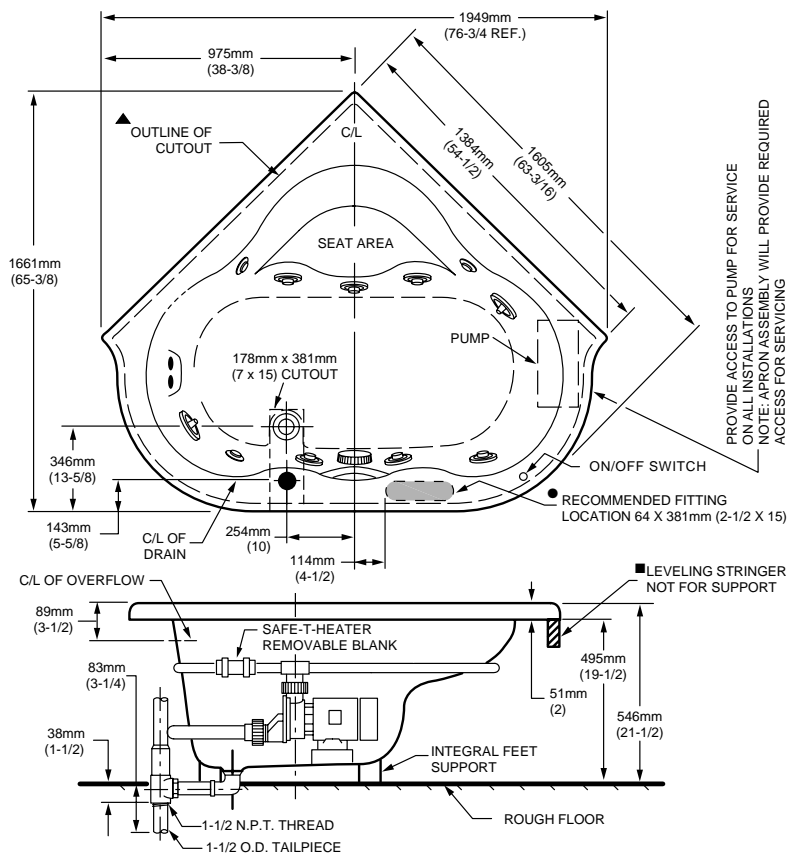
To Be Specified - Optional:

- Safe-T-Heater*: 9075.120
- Universal Tile Bead Kit: 751755-100
- Symphony Corner Apron: 0707.200 (specify color)
- System II Control Bezel: 9861.100 (specify finish)

For color/finish availability and other faucet choices, please see the Product Selector and Pricing Guide.

* **NOTE:** the Safe-T-Heater is designed to maintain water temperature during operation. It will not heat cold water to desired bathing temperature.

NOTE: Roughing-in dimensions and product specifications shown on reverse side of page.



PROVIDE ACCESS TO PUMP FOR SERVICE ON ALL INSTALLATIONS. NOTE: APRON ASSEMBLY WILL PROVIDE REQUIRED ACCESS FOR SERVICING

GENERAL SPECIFICATIONS FOR 6060 WHIRLPOOL	
INSTALLED SIZE	76-3/4 x 65-3/8 x 21-1/2 In. (1949 x 1661 x 546mm)
WEIGHT	105 Lbs. (48 Kg.)
WEIGHT w/WATER	822 Lbs. (370 Kg.)
GAL. TO OVERFLOW	86 Gal. (326 L)
WHIRLPOOL MIN. OPERATING VOL.	71 Gal. (269 L)
BATHING WELL AT SUMP	45 x 40 In. (1143 x 1016mm)
BATHING WELL AT RIM	49 x 43 In. (1245 x 1092mm)
WATER DEPTH TO OVERFLOW	15-3/8 In. (391mm)
FLOOR LOADING (PROJECTED AREA)	24 Lbs./Sq.Ft. (114 Kgs./Sq.m)
PTS.	41.7
CUBE (FT ³)	68.4
WHIRLPOOL ELECTRICAL SPECIFICATIONS	
SYSTEM II PUMP	2.1 HP, 15.6 AMPS, 120V.

NOTES:

BATH CAN BE INSTALLED EITHER ABOVE OR BELOW FLOOR LINE AS PIER, ISLAND OR PENINSULA TYPE INSTALLATION. SUPPORT OF BATH BY INTEGRAL FEET. NO ADDITIONAL SUPPORT REQUIRED. SUPPORT AND ENCLOSING MATERIAL BY OTHERS.

- REFER TO INSTALLATION INSTRUCTIONS SUPPLIED WITH WHIRLPOOL FOR ADDITIONAL INFORMATION.
- OPTIONAL 2-WALL TILING BEAD KIT No.751755-100 MUST BE ORDERED SEPARATELY.
- ▲ CUTOUT TEMPLATE PROVIDED IN SHIPPING BOX. MAY BE REQUESTED SEPARATELY. PROVIDE SUITABLE REINFORCEMENT FOR ALL WALL SUPPORTS.
- FITTINGS NOT INCLUDED, MUST BE ORDERED SEPARATELY.
- IF INSTALLING A DECK-MOUNTED FITTING, BEFORE DRILLING ANY HOLES: CHECK FOR INTERFERENCE WITH CIRCULATING SYSTEM PIPING, DRAIN OVERFLOW, AND APRON INSTALLATION. MOUNTING HOLES DRILLED BY INSTALLER.

IMPORTANT: Dimensions of fixtures are nominal and may vary within the range of tolerances established by ANSI Standard Z124.1. These measurements are subject to change or cancellation. No responsibility is assumed for use of superseded or voided leaflet.