

CLINIC SERVICE SINK

- Vitreous china
- Wall-hung
- Flushing rim
- Blow-out flushing action
- 1-1/2" brass top spud

9512.013 Service sink

Nominal Dimensions:
622 x 508mm
(24-1/2" x 20")

Note:

- 1) Recommended minimum working pressure:
25 psi at valve when flushing
- 2) Waste outlet piping: 4" preferred
3" acceptable

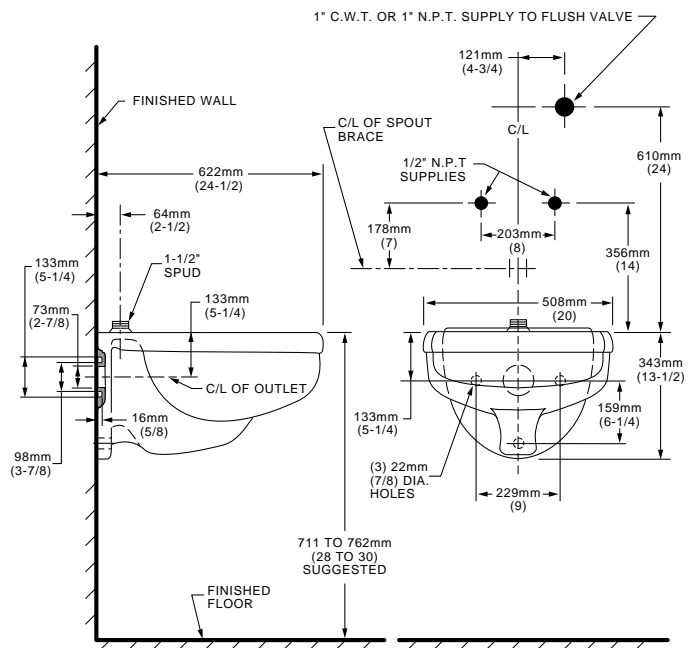
Fixture Dimensions conform to ANSI Standard
A112.19.2



To Be Specified

- Faucet: 8345.100 wall mounted with 152mm (6") wrist handles
- Alternate Faucet:
- Flush Valve: Sloan Royal 117H
- Alternate Flush Valve:
- Rim Guard: Stainless Steel 279mm (11") 7832.017 (3) if required
- Waste outlet seal (neoprene or graphite-felt)
- Bedpan Cleanser:
 - 7880.024
 - 7880.083
 - 7880.091
- Strainer: 037640-0200A Metal Loose Strainer
- Carrier Fitting (by others):

Available in White only



NOTES:

WASTE OUTLET SEAL RING MUST BE NEOPRENE OR GRAPHITE-FELT (WAX RING NOT RECOMMENDED).
TO COMPLY WITH AREA CODE GOVERNING THE HEIGHT OF VACUUM BREAKER ON FLUSH VALVE, THE PLUMBER MUST VERIFY DIMENSIONS SHOWN FOR SUPPLY ROUGH-IN.
CARRIER FITTING AS REQUIRED TO BE FURNISHED BY OTHERS.
SUGGESTED 1/16 CLEARANCE BETWEEN FACE OF WALL AND BACK OF SINK.
FLUSH VALVE AND FITTINGS NOT INCLUDED AND MUST BE ORDERED SEPARATELY.
PROVIDE SUITABLE REINFORCEMENT FOR ALL WALL SUPPORTS.
IMPORTANT: Dimensions of fixtures are nominal and may vary within the range of tolerances established by ANSI Standard A112.19.2.
These measurements are subject to change or cancellation. No responsibility is assumed for use of superseded or voided pages.