

LAKEWELL™ SERVICE SINK

- Enameled cast iron (inside only enameled)
- Supplied with wall hanger and rim guard
- Available with plain back or drilled back for faucet

7692.008
Drilled back for faucet

7692.000
Plain back (no faucet hole drilling)

8379.018
Rim Guard

Nominal Dimensions: 22" x 18"
(559 x 457mm)

Bowl sizes:

18-1/2" (470mm) wide,
14-1/8" (359mm) front to back,
10-1/2" (267mm) deep

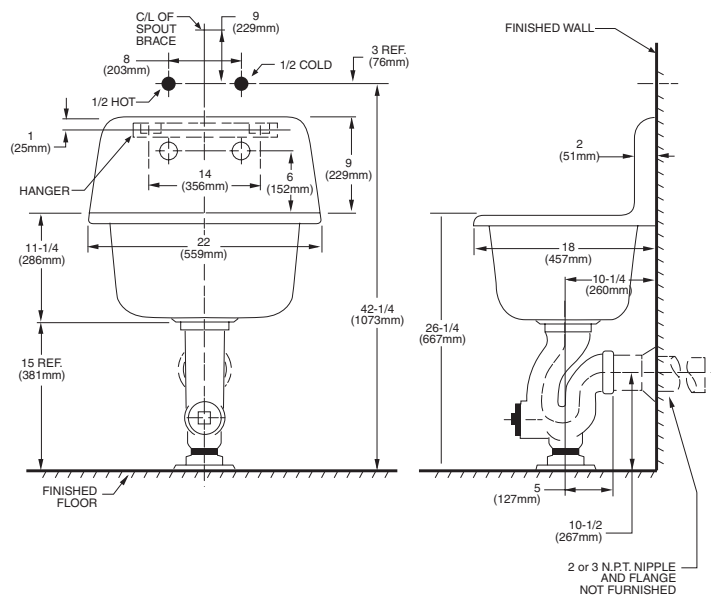
Compliance Certifications -

Meets or Exceeds the Following Specifications:

- ASME A112.19.1 for Cast Iron Plumbing Fixtures
- CAN / CSA B45 Series

To Be Specified

- Faucet: 8340.235 exposed yoke wall-mount utility faucet
- Faucet: 8340.243 same as above with vacuum breaker
- Faucet: 8341.076 same as above with vacuum breaker and stops in shanks
- Alternative Faucet
- Trap Standard: 7798.030 cast iron "P" trap standard to wall and strainer for 3" iron pipe
- Trap Standard: 7798.020 cast Iron "P" trap standard to wall and strainer for 2" iron pipe



NOTES:
PROVIDE SUITABLE REINFORCEMENT FOR ALL WALL SUPPORTS.
FITTING AND TRAP STANDARD NOT INCLUDED AND MUST BE ORDERED SEPARATELY.
IMPORTANT: Dimensions of fixtures are nominal and may vary within the range of tolerances established by ANSI Standard A112.19.1
These measurements are subject to change or cancellation. No responsibility is assumed for use of superseded or voided leaflet.

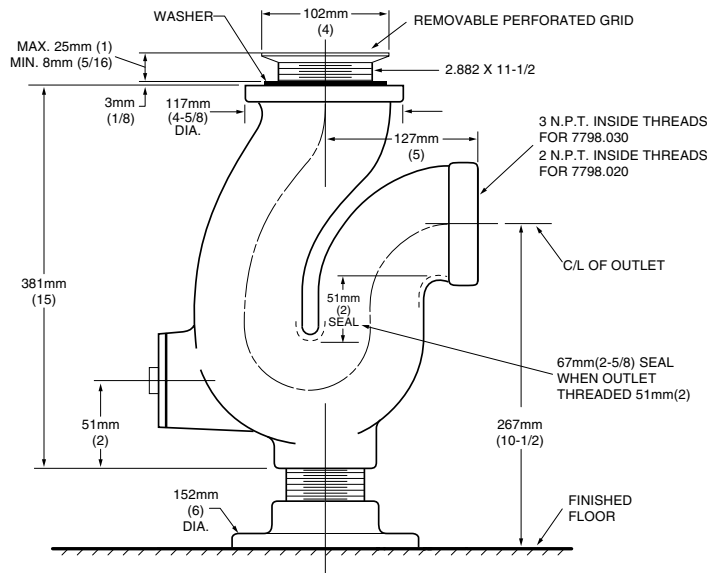
TRAP STANDARDS

- ☐ 7798.020
2" iron pipe with cleanout plug and strainer
- ☐ 7798.030
3" iron pipe with cleanout plug and strainer

Compliance Certifications -
Meets or Exceeds the Following Specifications:
• ASME A112.19.1 for Cast Iron Plumbing Fixtures



7798.020 / .030 IS FOR ENAMELED IRON SERVICE SINK



IMPORTANT: Dimensions of fixtures are nominal and may vary within the range of tolerances established by ANSI Standard A112.19.1. These measurements are subject to change or cancellation. No responsibility is assumed for use of superseded or voided leaflet.